



MLS 6347657 Land

\$59,000

0.69 Acres
Raw Land

31XXX Spruce Street
Pequot Lakes MN 56472

Status: Pending

Description:

Beautiful setting on a large corner lot, in the heart of Pequot Lakes. Build your business or the home of your dreams !! Very close to all of the conveniences in this highly sought after community. Mature trees on the property. Property is zoned Downtown Multi Use, so there are many types of businesses, Single Family or multi family units that would be permitted or conditional use permits issued. These are two separately buildable lots, but seller wishes to sell them together. Lots of great fishing lakes nearby.

Lots of public hunting land in the area as well.

Escape the noise and commotion of the big cities. Come check out these 2 lots in beautiful Pequot Lakes, Minnesota !!

Additional Details:

Lot Acres	0.69
Lot Dimensions	200x150x200x150
School District	186
Taxes	\$226
Taxes with Assessments	\$226
Tax Year	2022

Additional Features:

Driving Directions:

From 371, take Pequot Lakes exit, go west to the stop lights, right to W Sibley Street, go left to Spruce Street (corner) to for sale signs.



Listed By:
Timber Ghost Realty, LLC

Affinity Real Estate Inc. participates in the Regional Multiple Listing Service of Minnesota, Inc Broker Reciprocity (sm) program, allowing us to display other broker's listings on our website. All properties are subject to prior sale, change or withdrawal.



Call Affinity Real Estate

218-237-3333

info@affinityrealestate.com



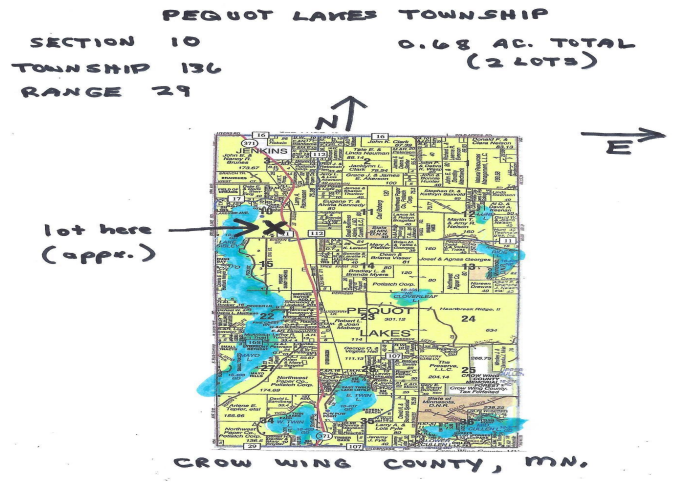
Affinity Real Estate - 600 Park Avenue South - Park Rapids MN 56470



website: www.AffinityRealEstate.com | email: info@affinityrealestate.com | office: 218-237-3333 | fax:218-237-3377



\$59,000
MLS 6347657 Land
31XXX Spruce Street
Pequot Lakes MN 56472



website: www.AffinityRealEstate.com | email: info@affinityrealestate.com | office: 218-237-3333 | fax: 218-237-3377



\$59,000
MLS 6347657 Land
31XXX Spruce Street
Pequot Lakes MN 56472