



MLS 6348879 Residential

\$450,000

3,558 sq ft
5 bedrooms
4 baths

1592 Rivercrest Lane
Bemidji MN 56601

Status: Closed

Description:

Lovely 5 bed, 4 bath home. The grand entrance leads you to a formal living room w/a wood burning fireplace & on to a formal dining room. Nice kitchen w/a sweet 2nd informal dining area. 2nd main floor living area leads to the covered screened porch. 10ft ceilings on the main & lower levels are a plus. The lower level includes an office w/a walk out. Entertain family & friends in the 3rd living room next to the 2nd fireplace. Updates include new carpeting, painting, light fixtures, new oven & dishwasher. The large garden was cared for w/pride. The 3-stall garage has been repainted for a fresh look. The home is conveniently located minutes to downtown Bemidji. So much to see, set up your private tour.

Additional Details:

Year Built	1994
Lot Acres	1.84
Lot Dimensions	400x200
Garage Stalls	3
School District	31
Taxes	\$4,252
Taxes with Assessments	\$4,252
Tax Year	2022

Additional Features:

Basement: Egress Window(s), Finished, Concrete, Walkout **Fuel:** Electric, Propane **Garage:** 3 **Heat:** Forced Air, Fireplace(s), Heat Pump, Radiant Floor **Sewer:** Private Sewer **Water:** Private, Well **Air Conditioning:** Central Air

Driving Directions:

From downtown Bemidji take 5th St west to Jefferson Ave SW. Left on Jefferson to Rivercrest Ln SW. Right on Rivercrest. Home on the left.



Listed By:
Better Homes and Gardens Real Estate First Choice

Affinity Real Estate Inc. participates in the Regional Multiple Listing Service of Minnesota, Inc Broker Reciprocity (sm) program, allowing us to display other broker's listings on our website. All properties are subject to prior sale, change or withdrawal.



Call Affinity Real Estate

218-237-3333

info@affinityrealestate.com



Affinity Real Estate - 600 Park Avenue South - Park Rapids MN 56470



website: www.AffinityRealEstate.com | email: info@affinityrealestate.com | office: 218-237-3333 | fax: 218-237-3377

Affinity
REAL ESTATE INC

\$450,000
MLS 6348879 Residential
1592 Rivercrest Lane
Bemidji MN 56601



website: www.AffinityRealEstate.com | email: info@affinityrealestate.com | office: 218-237-3333 | fax: 218-237-3377

Affinity
REAL ESTATE INC

\$450,000
MLS 6348879 Residential
1592 Rivercrest Lane
Bemidji MN 56601



website: www.AffinityRealEstate.com | email: info@affinityrealestate.com | office: 218-237-3333 | fax: 218-237-3377

Affinity
REAL ESTATE INC

\$450,000
MLS 6348879 Residential
1592 Rivercrest Lane
Bemidji MN 56601



website: www.AffinityRealEstate.com | email: info@affinityrealestate.com | office: 218-237-3333 | fax: 218-237-3377

Affinity
REAL ESTATE INC

\$450,000
MLS 6348879 Residential
1592 Rivercrest Lane
Bemidji MN 56601



website: www.AffinityRealEstate.com | email: info@affinityrealestate.com | office: 218-237-3333 | fax: 218-237-3377

Affinity
REAL ESTATE INC

\$450,000
MLS 6348879 Residential
1592 Rivercrest Lane
Bemidji MN 56601



website: www.AffinityRealEstate.com | email: info@affinityrealestate.com | office: 218-237-3333 | fax: 218-237-3377



\$450,000
 MLS 6348879 Residential
 1592 Rivercrest Lane
 Bemidji MN 56601



website: www.AffinityRealEstate.com | email: info@affinityrealestate.com | office: 218-237-3333 | fax: 218-237-3377

Affinity
REAL ESTATE INC

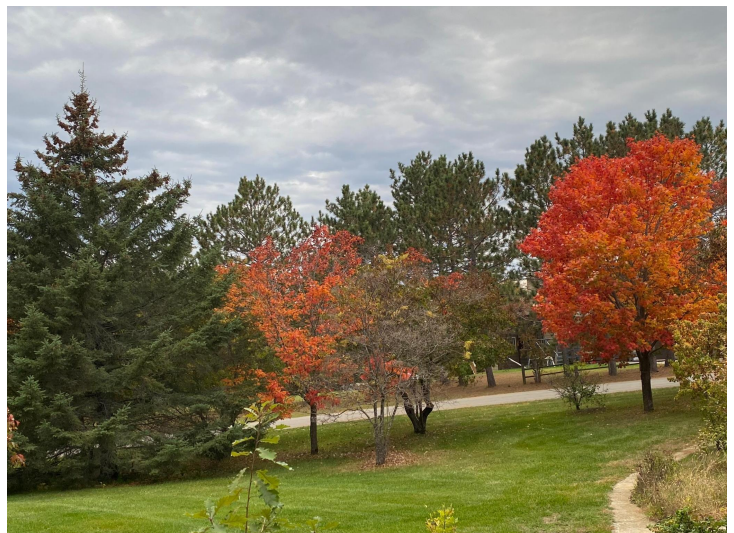
\$450,000
MLS 6348879 Residential
1592 Rivercrest Lane
Bemidji MN 56601



website: www.AffinityRealEstate.com | email: info@affinityrealestate.com | office: 218-237-3333 | fax: 218-237-3377



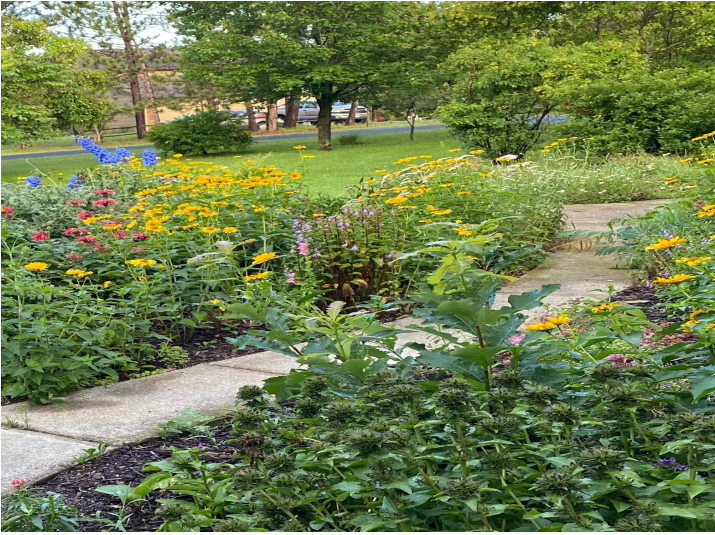
\$450,000
 MLS 6348879 Residential
 1592 Rivercrest Lane
 Bemidji MN 56601



website: www.AffinityRealEstate.com | email: info@affinityrealestate.com | office: 218-237-3333 | fax: 218-237-3377



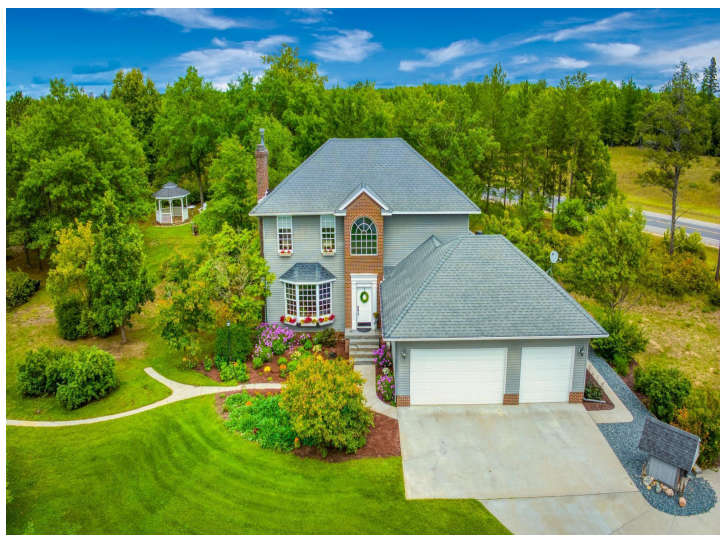
\$450,000
MLS 6348879 Residential
1592 Rivercrest Lane
Bemidji MN 56601



website: www.AffinityRealEstate.com | email: info@affinityrealestate.com | office: 218-237-3333 | fax: 218-237-3377

Affinity
REAL ESTATE INC

\$450,000
MLS 6348879 Residential
1592 Rivercrest Lane
Bemidji MN 56601



website: www.AffinityRealEstate.com | email: info@affinityrealestate.com | office: 218-237-3333 | fax: 218-237-3377

Affinity
REAL ESTATE INC

\$450,000
MLS 6348879 Residential
1592 Rivercrest Lane
Bemidji MN 56601



website: www.AffinityRealEstate.com | email: info@affinityrealestate.com | office: 218-237-3333 | fax: 218-237-3377

Affinity
REAL ESTATE INC

\$450,000
MLS 6348879 Residential
1592 Rivercrest Lane
Bemidji MN 56601



website: www.AffinityRealEstate.com | email: info@affinityrealestate.com | office: 218-237-3333 | fax: 218-237-3377

Affinity
REAL ESTATE INC

\$450,000
MLS 6348879 Residential
1592 Rivercrest Lane
Bemidji MN 56601



website: www.AffinityRealEstate.com | email: info@affinityrealestate.com | office: 218-237-3333 | fax:218-237-3377



\$450,000

MLS 6348879 Residential
1592 Rivercrest Lane
Bemidji MN 56601