



MLS 6356203 Land

\$29,900

0.22 Acres
Subdivided

TBD Lot 5 Beartooth Avenue
Bemidji MN 56601

Status: Active

Description:

Say hello to the new community, Mountain View Meadows in the city limits of Bemidji, south end of town. Purchase this lot #5 or pick from others that are available. Look forward to an equipped play area for children, soccer or snowboarding, biking or hiking paths, there will be plenty to enjoy. Drive through and choose where you want to build your next home. Call for details.

Additional Details:

Lot Acres	0.22
Lot Dimensions	70x120x100x105
School District	31
Taxes	\$208
Taxes with Assessments	\$208
Tax Year	2023

Additional Features:

Driving Directions:

South on Washington Ave S to Shedhorn St SW. Right on Shedhorn St SW to Beartooth Ave SW. Lot on the right.



Listed By:
Better Homes and Gardens Real Estate First Choice

Affinity Real Estate Inc. participates in the Regional Multiple Listing Service of Minnesota, Inc Broker Reciprocity (sm) program, allowing us to display other broker's listings on our website. All properties are subject to prior sale, change or withdrawal.



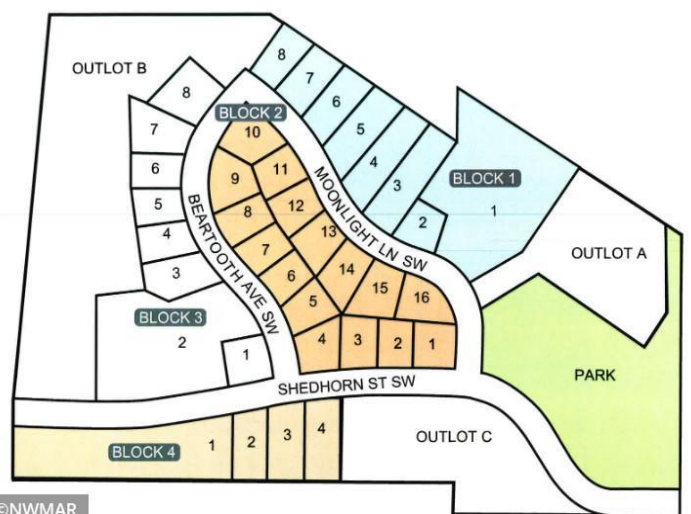
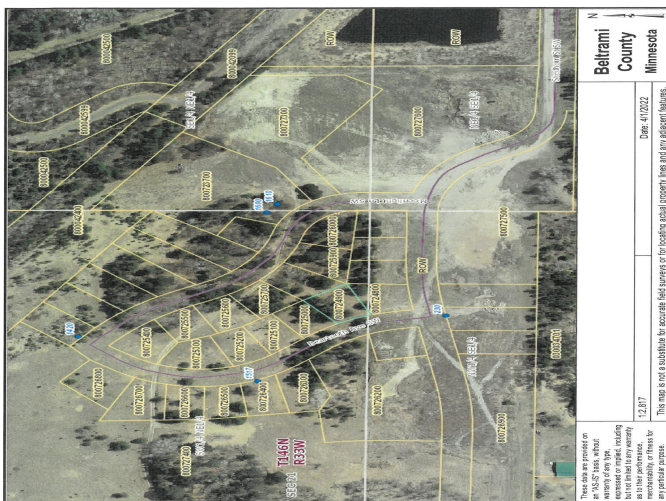
Call Affinity Real Estate

218-237-3333

info@affinityrealestate.com



Affinity Real Estate - 600 Park Avenue South - Park Rapids MN 56470



website: www.AffinityRealEstate.com | email: info@affinityrealestate.com | office: 218-237-3333 | fax: 218-237-3377



\$29,900
 MLS 6356203 Land
 TBD Lot 5 Beartooth Avenue
 Bemidji MN 56601