



MLS 6357332 Land

**\$49,900**

0.42 Acres  
Plat Designed

1481 Michigan Avenue  
Detroit Lakes MN 56501

Status: Active

**Description:**

Bring your builder and enjoy life in the quiet and convenient Lake Breeze Estates! Beautiful, level lot with Detroit Lake in the background. Access to Heartland State Trail right down the road! LOW special assessment balance and city water/sewer.

**Additional Details:**

Lot Acres	0.42
Lot Dimensions	129x140
School District	22
Taxes	\$3,740
Taxes with Assessments	\$3,740
Tax Year	2022

**Additional Features:**

**Driving Directions:**

From Hwy 10, take Warnake Rd to Michigan Ave. and it is third lot on right side.



Listed By:  
RE/MAX LAKES REGION

Affinity Real Estate Inc. participates in the Regional Multiple Listing Service of Minnesota, Inc Broker Reciprocity (sm) program, allowing us to display other broker's listings on our website. All properties are subject to prior sale, change or withdrawal.



**Call Affinity Real Estate**

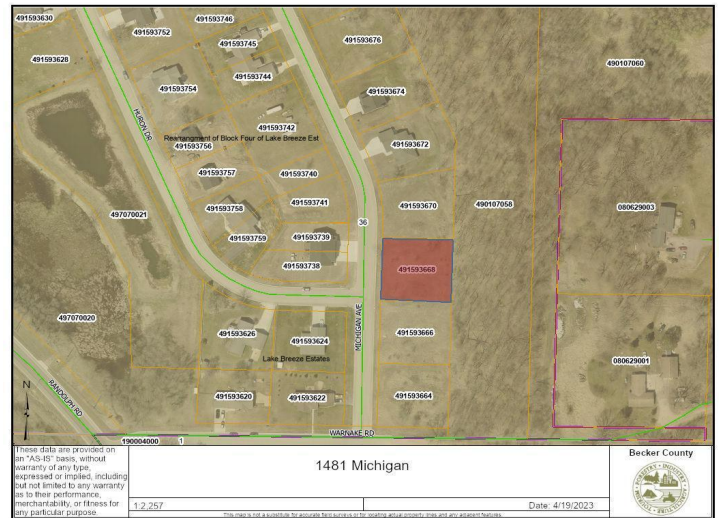
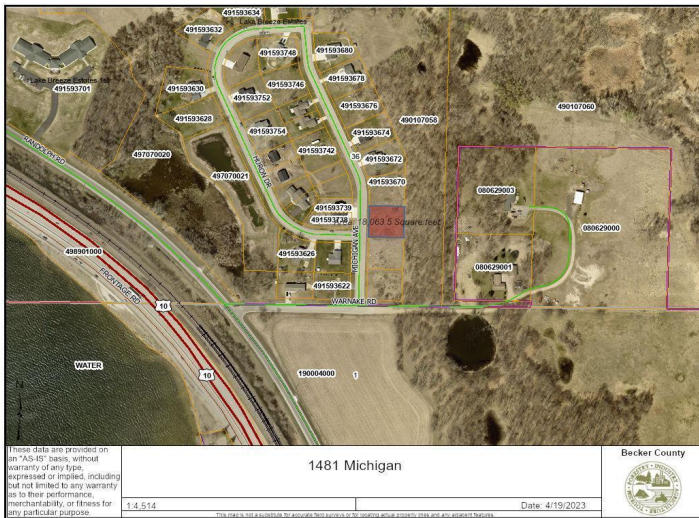
**218-237-3333**

**[info@affinityrealestate.com](mailto:info@affinityrealestate.com)**



**Affinity Real Estate - 600 Park Avenue South - Park Rapids MN 56470**





website: [www.AffinityRealEstate.com](http://www.AffinityRealEstate.com) | email: [info@affinityrealestate.com](mailto:info@affinityrealestate.com) | office: 218-237-3333 | fax: 218-237-3377



**\$49,900**  
 MLS 6357332 Land  
 1481 Michigan Avenue  
 Detroit Lakes MN 56501