



MLS 6358179 Residential

\$199,800

1,824 sq ft
4 bedrooms
2 baths

2804 Irvine Avenue
Bemidji MN 56601

Status: Closed

Description:

Here it is, a 4 bedroom 2 bathroom home located in Bemidji that is priced under \$230,000! 3 bedrooms and a full bath up and 1 bedroom and full bath down. Location that is close to schools, shopping, restaurants, city parks and Lake Bemidji. Finished lower level with an additional family room. Screen porch area off the back for your summer time enjoyment, or some additional storage in the winter. 1 car attached garage.

Additional Details:

Year Built	1972
Lot Acres	0.42
Lot Dimensions	70x260
Garage Stalls	1
School District	31
Taxes	\$1,796
Taxes with Assessments	\$1,796
Tax Year	2023

Additional Features:

Basement: Block **Fuel:** Natural Gas **Garage:** 1 **Heat:** Forced Air **Sewer:** City Sewer/Connected **Water:** City Water/Connected **Air Conditioning:** Central Air

Driving Directions:

From the intersection of Irvine Ave and Paul Bunyan Drive, go North to 2804 Irvine Ave NW.



Listed By:
Coldwell Banker Crown Realtors

Affinity Real Estate Inc. participates in the Regional Multiple Listing Service of Minnesota, Inc Broker Reciprocity (sm) program, allowing us to display other broker's listings on our website. All properties are subject to prior sale, change or withdrawal.



Call Affinity Real Estate

218-237-3333

info@affinityrealestate.com



Affinity Real Estate - 600 Park Avenue South - Park Rapids MN 56470



website: www.AffinityRealEstate.com | email: info@affinityrealestate.com | office: 218-237-3333 | fax: 218-237-3377

Affinity
REAL ESTATE INC

\$199,800
MLS 6358179 Residential
2804 Irvine Avenue
Bemidji MN 56601



website: www.AffinityRealEstate.com | email: info@affinityrealestate.com | office: 218-237-3333 | fax: 218-237-3377

Affinity
REAL ESTATE INC

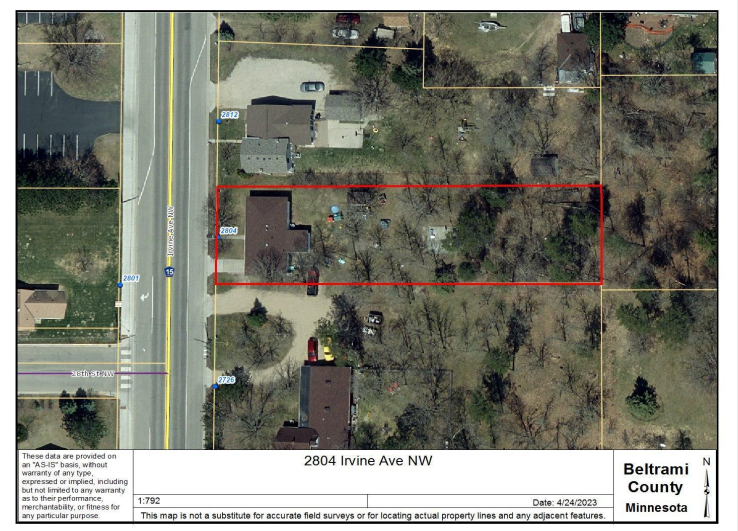
\$199,800
MLS 6358179 Residential
2804 Irvine Avenue
Bemidji MN 56601



website: www.AffinityRealEstate.com | email: info@affinityrealestate.com | office: 218-237-3333 | fax: 218-237-3377

Affinity
REAL ESTATE INC

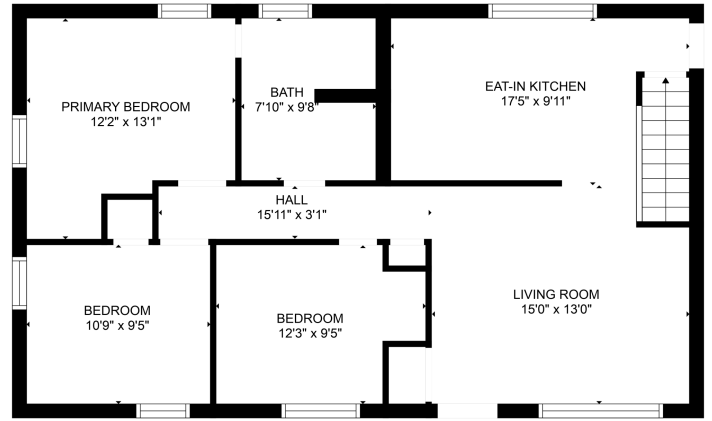
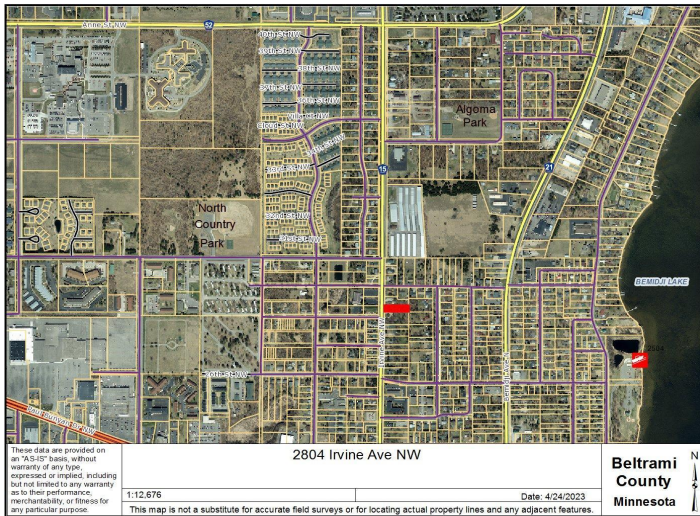
\$199,800
MLS 6358179 Residential
2804 Irvine Avenue
Bemidji MN 56601



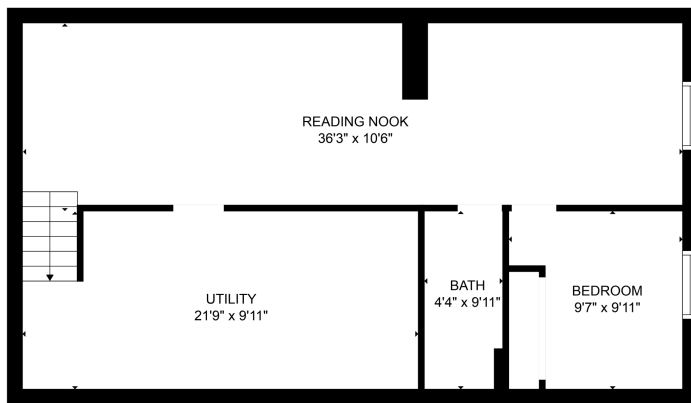
website: www.AffinityRealEstate.com | email: info@affinityrealestate.com | office: 218-237-3333 | fax: 218-237-3377

Affinity
REAL ESTATE INC

\$199,800
MLS 6358179 Residential
2804 Irvine Avenue
Bemidji MN 56601



GROSS INTERNAL AREA
FLOOR 1: 885 sq. ft.
TOTAL: 885 sq. ft.
MEASUREMENTS ARE CALCULATED BY CURSORY TECHNIQUES. SHOULD BE USED AS A GUIDE ONLY. NOT GUARANTEED.



GROSS INTERNAL AREA
FLOOR 2: 741 sq. ft.
TOTAL: 1626 sq. ft.
MEASUREMENTS ARE CALCULATED BY CURSORY TECHNIQUES. SHOULD BE USED AS A GUIDE ONLY. NOT GUARANTEED.

website: www.AffinityRealEstate.com | email: info@affinityrealestate.com | office: 218-237-3333 | fax: 218-237-3377

Affinity
REAL ESTATE INC

\$199,800
MLS 6358179 Residential
2804 Irvine Avenue
Bemidji MN 56601