



MLS 6358214 Residential

\$319,000

1,783 sq ft
3 bedrooms
2 baths

1612 Beartooth Avenue
Bemidji MN 56601

Status: Active

Description:

Welcome to Mountain View Meadow, It's as easy as 321 home ownership!!! 3 bed/2 bath/ 1 level affordable housing for individuals who live on a fixed income, with city services. Yes, you can have a garden, pets, flower beds, with sodded yard and lawn sprinkler. You can have your cake and eat it too. This is a new development on the south side of Bemidji, MN that allows you the freedom of living in a community without the extra fees. There are many housing plan options and financing available for you to choose from.

Additional Details:

Year Built	2023
Lot Acres	0.37
Lot Dimensions	85x105
Garage Stalls	2
School District	31
Taxes	\$186
Taxes with Assessments	\$186
Tax Year	2023

Additional Features:

Basement: Slab **Fuel:** Natural Gas **Garage:** 2 **Heat:** Ductless Mini-Split, Hot Water, Radiant Floor **Sewer:** City Sewer/Connected **Water:** City Water/Connected **Air Conditioning:** Ductless Mini-Split

Driving Directions:

S. on Washington Ave., take a right just past the railroad bridge, follow road, stay left then turn right on Beartooth. The lot will be on the right.



Listed By:
Andy Williams Realty Group, LLC

Affinity Real Estate Inc. participates in the Regional Multiple Listing Service of Minnesota, Inc Broker Reciprocity (sm) program, allowing us to display other broker's listings on our website. All properties are subject to prior sale, change or withdrawal.



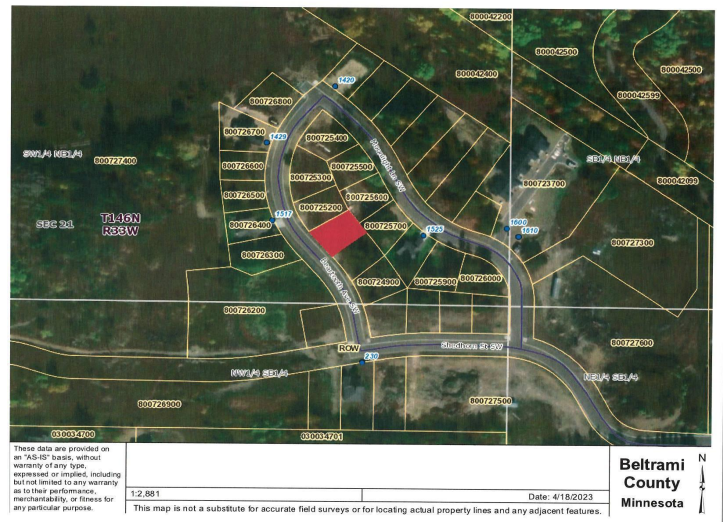
Call Affinity Real Estate

218-237-3333

info@affinityrealestate.com



Affinity Real Estate - 600 Park Avenue South - Park Rapids MN 56470



website: www.AffinityRealEstate.com | email: info@affinityrealestate.com | office: 218-237-3333 | fax: 218-237-3377

Affinity
REAL ESTATE INC

\$319,000
MLS 6358214 Residential
1612 Beartooth Avenue
Bemidji MN 56601



website: www.AffinityRealEstate.com | email: info@affinityrealestate.com | office: 218-237-3333 | fax: 218-237-3377



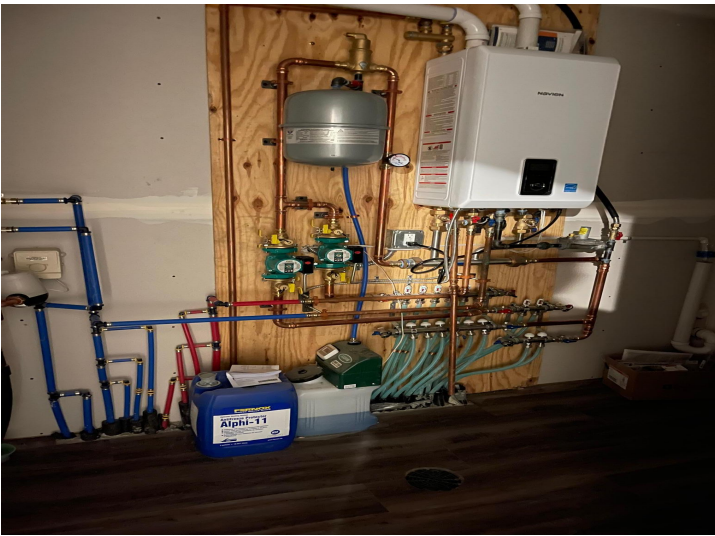
\$319,000
 MLS 6358214 Residential
 1612 Beartooth Avenue
 Bemidji MN 56601



website: www.AffinityRealEstate.com | email: info@affinityrealestate.com | office: 218-237-3333 | fax: 218-237-3377



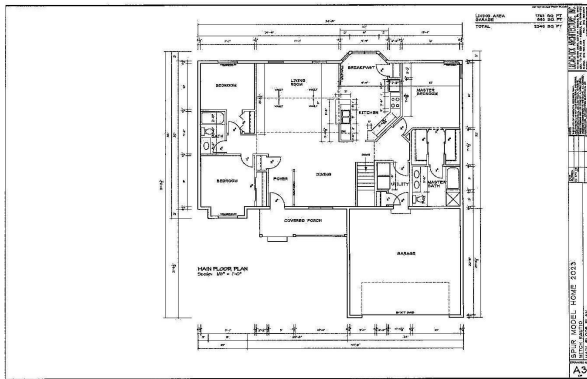
\$319,000
MLS 6358214 Residential
1612 Beartooth Avenue
Bemidji MN 56601



website: www.AffinityRealEstate.com | email: info@affinityrealestate.com | office: 218-237-3333 | fax: 218-237-3377

Affinity
REAL ESTATE INC

\$319,000
MLS 6358214 Residential
1612 Beartooth Avenue
Bemidji MN 56601



website: www.AffinityRealEstate.com | email: info@affinityrealestate.com | office: 218-237-3333 | fax: 218-237-3377



\$319,000
 MLS 6358214 Residential
 1612 Beartooth Avenue
 Bemidji MN 56601