



MLS 6359941 Land

**\$399,000**

160 Acres  
Raw Land

31XXX County Highway 26  
Detroit Lakes MN 56585

Status: Active

**Description:**

Welcome to 160 acres of prime real estate near Detroit Lakes. This expansive piece of land offers a perfect mix of woods and lowlands which provides excellent funneling opportunities for deer, making it an ideal hunting location. Also hunt bear and grouse here as well. Recorded easement to access the property. Two well-maintained food plots strategically placed throughout the property, you'll have plenty of opportunities for successful hunting seasons.

The established trail system travels from the north side all the way to the south side on each side of the property with others trails throughout. Whether you're exploring on foot or on a wheeler, you'll have easy access to every corner of the land.

Snowmobile trail travels through this property in the winter months. Town is close by for all the necessities and amenities. Plus, many lakes nearby to enjoy for fishing or water sports. Escape the noise and commotion of the big cities. Come check this country land out !!!

**Additional Details:**

Lot Acres	160
Lot Dimensions	2640x2640
School District	22
Taxes	\$1,372
Taxes with Assessments	\$1,372
Tax Year	2022

**Additional Features:**

**Driving Directions:**

From the intersection of County Highway 26 and County Highway 21., head east approximate 3 miles, property will be on your right ( south side ) of the road.



Listed By:  
Timber Ghost Realty, LLC

Affinity Real Estate Inc. participates in the Regional Multiple Listing Service of Minnesota, Inc Broker Reciprocity (sm) program, allowing us to display other broker's listings on our website. All properties are subject to prior sale, change or withdrawal.



**Call Affinity Real Estate**

**218-237-3333**

**info@affinityrealestate.com**



**Affinity Real Estate - 600 Park Avenue South - Park Rapids MN 56470**



website: [www.AffinityRealEstate.com](http://www.AffinityRealEstate.com) | email: [info@affinityrealestate.com](mailto:info@affinityrealestate.com) | office: 218-237-3333 | fax:218-237-3377

**Affinity**  
REAL ESTATE INC

**\$399,000**  
MLS 6359941 Land  
31XXX County Highway 26  
Detroit Lakes MN 56585



website: [www.AffinityRealEstate.com](http://www.AffinityRealEstate.com) | email: [info@affinityrealestate.com](mailto:info@affinityrealestate.com) | office: 218-237-3333 | fax:218-237-3377



**\$399,000**  
MLS 6359941 Land  
31XXX County Highway 26  
Detroit Lakes MN 56585



website: [www.AffinityRealEstate.com](http://www.AffinityRealEstate.com) | email: [info@affinityrealestate.com](mailto:info@affinityrealestate.com) | office: 218-237-3333 | fax:218-237-3377



**\$399,000**  
MLS 6359941 Land  
31XXX County Highway 26  
Detroit Lakes MN 56585

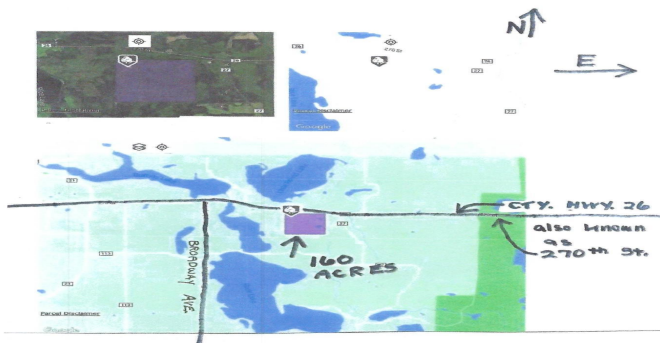


website: [www.AffinityRealEstate.com](http://www.AffinityRealEstate.com) | email: [info@affinityrealestate.com](mailto:info@affinityrealestate.com) | office: 218-237-3333 | fax:218-237-3377



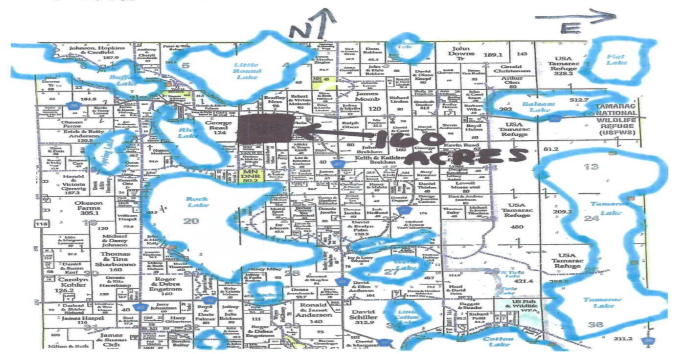
**\$399,000**  
MLS 6359941 Land  
31XXX County Highway 26  
Detroit Lakes MN 56585

160 ACRES  
31XXX Cty. Hwy. 26 / 270th St.  
Detroit Lakes, Mn. 56578



https://outlook.live.com/mail/0/mbox/n/AQGKADAwATY0MDABLTKYWEALWMDODMMDACLTAwCpAGANn7f8B6eW9PgJkYYPBEsQ3D6ss/AG... 2/3

HOLMESVILLE TWP.  
SECTION 9  
TOWNSHIP 140  
RANGE 40  
160 ACRES  
BECKER COUNTY, MN.



https://outlook.live.com/mail/0/mbox/n/AQGKADAwATY0MDABLTKYWEALWMDODMMDACLTAwCpAGANn7f8B6eW9PgJkYYPBEsQ3D6ss/AG... 2/3



website: [www.AffinityRealEstate.com](http://www.AffinityRealEstate.com) | email: [info@affinityrealestate.com](mailto:info@affinityrealestate.com) | office: 218-237-3333 | fax: 218-237-3377



**\$399,000**  
MLS 6359941 Land  
31XXX County Highway 26  
Detroit Lakes MN 56585



website: [www.AffinityRealEstate.com](http://www.AffinityRealEstate.com) | email: [info@affinityrealestate.com](mailto:info@affinityrealestate.com) | office: 218-237-3333 | fax:218-237-3377



**\$399,000**  
MLS 6359941 Land  
31XXX County Highway 26  
Detroit Lakes MN 56585



website: [www.AffinityRealEstate.com](http://www.AffinityRealEstate.com) | email: [info@affinityrealestate.com](mailto:info@affinityrealestate.com) | office: 218-237-3333 | fax:218-237-3377



**\$399,000**  
MLS 6359941 Land  
31XXX County Highway 26  
Detroit Lakes MN 56585





website: [www.AffinityRealEstate.com](http://www.AffinityRealEstate.com) | email: [info@affinityrealestate.com](mailto:info@affinityrealestate.com) | office: 218-237-3333 | fax:218-237-3377



**\$399,000**  
MLS 6359941 Land  
31XXX County Highway 26  
Detroit Lakes MN 56585