



MLS 6360588 Lake Home

\$900,000

2,012 sq ft
3 bedrooms
3 baths

24643 Melissa Drive
Detroit Lakes MN 56501

Waterfront: Melissa

Status: Hold

Description:

****Highest and best offers due Monday May 22 by 6pm**** Come see this Charming Lake Home with a cottage-like appeal situated on the highly desirable North Shore of Lake Melissa. Features include: 3 bedrooms / 3 bathrooms, a level lake lot with sandy beach (great for swimming), an oversized main level bedroom with its own private patio and en-suite, main lvl laundry, open kitchen with upgraded granite countertops, hardwood floors throughout, oversized great-room with a wood burning fireplace that walks out to a 24' x 11' screened-in porch. The upper level boasts 2 spacious bedrooms and a bathroom. The garage includes a workshop and a "bunk-room" with plumbing (sink). The front of the cabin overlooks the 15th fairway of the Detroit Country Club and also near Hotel Shoreham. ****The dock and personal property are included in the sale. This property will be live and showable on May 18th. Photos and additional information will be provided on May 11th.**

Additional Details:

Year Built	1905
Lot Acres	0.42
Lot Dimensions	71x270x70x259
Garage Stalls	2
School District	22
Taxes	\$5,458
Taxes with Assessments	\$5,458
Tax Year	2023

Additional Features:

Basement: Crawl Space **Fuel:** Electric **Garage:** 2 **Heat:** Other **Sewer:** Private Sewer **Water:** Well **Air Conditioning:** Window Unit(s)

Driving Directions:

Hwy 59 South from Detroit Lakes; South on 22/17; West on N Melissa Drive to home



Listed By:
Re/Max Advantage Plus

Affinity Real Estate Inc. participates in the Regional Multiple Listing Service of Minnesota, Inc Broker Reciprocity (sm) program, allowing us to display other broker's listings on our website. All properties are subject to prior sale, change or withdrawal.



Call Affinity Real Estate

218-237-3333

info@affinityrealestate.com



Affinity Real Estate - 600 Park Avenue South - Park Rapids MN 56470



website: www.AffinityRealEstate.com | email: info@affinityrealestate.com | office: 218-237-3333 | fax: 218-237-3377

Affinity
REAL ESTATE INC

\$900,000
MLS 6360588 Lake Home
24643 Melissa Drive
Detroit Lakes MN 56501



website: www.AffinityRealEstate.com | email: info@affinityrealestate.com | office: 218-237-3333 | fax: 218-237-3377

Affinity
REAL ESTATE INC

\$900,000
MLS 6360588 Lake Home
24643 Melissa Drive
Detroit Lakes MN 56501



website: www.AffinityRealEstate.com | email: info@affinityrealestate.com | office: 218-237-3333 | fax:218-237-3377

Affinity
REAL ESTATE INC

\$900,000
MLS 6360588 Lake Home
24643 Melissa Drive
Detroit Lakes MN 56501



website: www.AffinityRealEstate.com | email: info@affinityrealestate.com | office: 218-237-3333 | fax: 218-237-3377

Affinity
REAL ESTATE INC

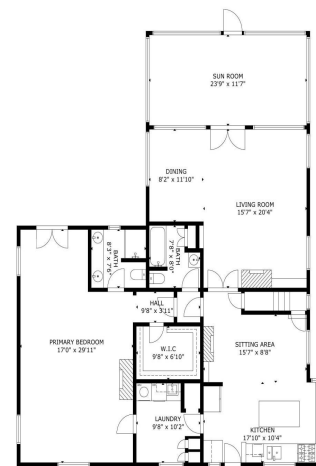
\$900,000
MLS 6360588 Lake Home
24643 Melissa Drive
Detroit Lakes MN 56501



website: www.AffinityRealEstate.com | email: info@affinityrealestate.com | office: 218-237-3333 | fax: 218-237-3377

Affinity
REAL ESTATE INC

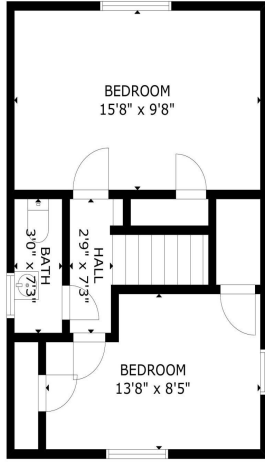
\$900,000
MLS 6360588 Lake Home
24643 Melissa Drive
Detroit Lakes MN 56501



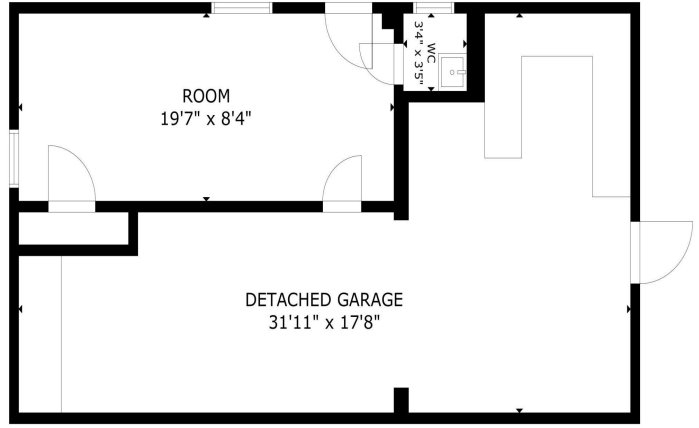
website: www.AffinityRealEstate.com | email: info@affinityrealestate.com | office: 218-237-3333 | fax: 218-237-3377



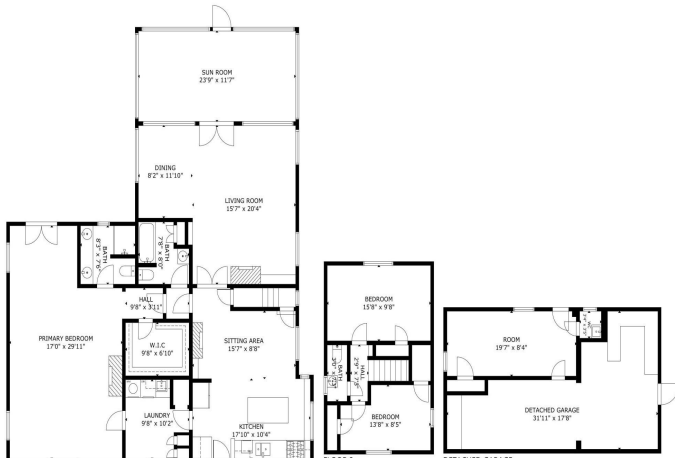
\$900,000
 MLS 6360588 Lake Home
 24643 Melissa Drive
 Detroit Lakes MN 56501



FLOOR 2
 GROSS INTERNAL AREA
 TOTAL 2,278 sq ft
 FLOOR 1: 1,500 sq ft, FLOOR 2: 278 sq ft
 EXCLUDED AREA: DETACHED GARAGE 344 sq ft
 SIZE AND DIMENSIONS ARE APPROXIMATE, ACTUAL MAY VARY.



DETACHED GARAGE
 GROSS INTERNAL AREA
 TOTAL 2,278 sq ft
 FLOOR 1: 1,500 sq ft, FLOOR 2: 278 sq ft
 EXCLUDED AREA: DETACHED GARAGE 344 sq ft
 SIZE AND DIMENSIONS ARE APPROXIMATE, ACTUAL MAY VARY.



FLOOR 1
 GROSS INTERNAL AREA
 TOTAL 2,278 sq ft
 FLOOR 1: 1,500 sq ft, FLOOR 2: 278 sq ft
 EXCLUDED AREA: DETACHED GARAGE 344 sq ft
 SIZE AND DIMENSIONS ARE APPROXIMATE, ACTUAL MAY VARY.

website: www.AffinityRealEstate.com | email: info@affinityrealestate.com | office: 218-237-3333 | fax: 218-237-3377



\$900,000
 MLS 6360588 Lake Home
 24643 Melissa Drive
 Detroit Lakes MN 56501