

MLS 6362847 Lake Land

\$500,000

Description:

Make an appointment to check out the recently platted New Paradise Point lots on Lake George. 8 lots are being offered ranging in size from 2.55 to 9.51 acres. Nice tree cover, privacy and beautiful building sites with captivating views of Lake George. Prices vary from \$89,900 to \$139,900 and the point is offered at \$500,000 consisting of 1,450' of lakeshore, gentle elevation and panoramic views. The clear waters of Lake George boast 825 acres for recreation, boating, viewing wildlife and nature. This outstanding lake is well known for its fishing opportunities and is centrally located between Park Rapids, Bemidji and Walker.

Additional Details:

Lot Acres	3.89
Lot Dimensions	Irregular
School District	309
Taxes	\$3,048
Taxes with Assessments	\$3,048
Tax Year	2022

Additional Features:

Driving Directions:

From 34/71 in Park Rapids, East on 34 to a left onto County 4. Follow County 4 North, approx 16 miles to a right on New Paradise Drive to property.



Listed By:
Wolff & Simon Real Estate

Affinity Real Estate Inc. participates in the Regional Multiple Listing Service of Minnesota, Inc Broker Reciprocity (sm) program, allowing us to display other broker's listings on our website. All properties are subject to prior sale, change or withdrawal.



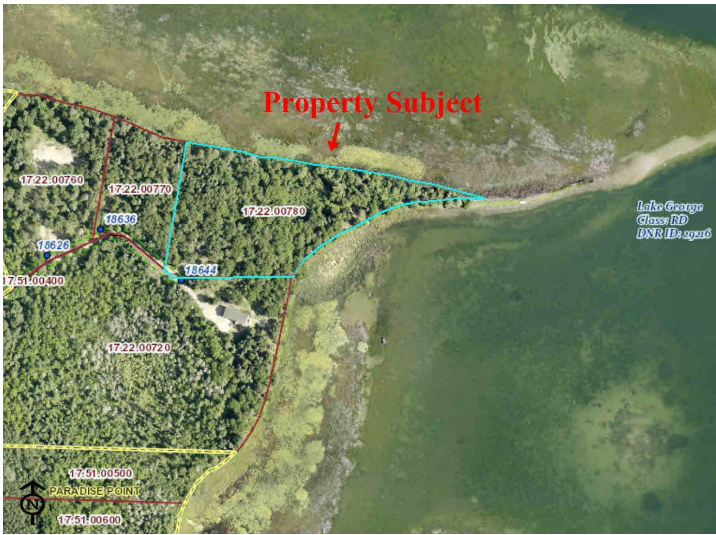
Call Affinity Real Estate

218-237-3333

info@affinityrealestate.com



Affinity Real Estate - 600 Park Avenue South - Park Rapids MN 56470



website: www.AffinityRealEstate.com | email: info@affinityrealestate.com | office: 218-237-3333 | fax: 218-237-3377



\$500,000
 MLS 6362847 Lake Land
 TBD Parcel D New Paradise
 Point Drive
 Lake George MN 56458



website: www.AffinityRealEstate.com | email: info@affinityrealestate.com | office: 218-237-3333 | fax:218-237-3377



\$500,000
MLS 6362847 Lake Land
TBD Parcel D New Paradise
Point Drive
Lake George MN 56458



website: www.AffinityRealEstate.com | email: info@affinityrealestate.com | office: 218-237-3333 | fax: 218-237-3377



\$500,000
 MLS 6362847 Lake Land
 TBD Parcel D New Paradise
 Point Drive
 Lake George MN 56458



website: www.AffinityRealEstate.com | email: info@affinityrealestate.com | office: 218-237-3333 | fax: 218-237-3377



\$500,000
MLS 6362847 Lake Land
TBD Parcel D New Paradise
Point Drive
Lake George MN 56458