



MLS 6364246 Lake Land

\$750,000

Description:

Escape the hustle and bustle of city life and create your own private retreat on this beautiful piece of land. Featuring 26.95 acres - see survey and approximately 2000' of frontage on Sylvan lake! Enjoy the peacefulness of nature as you take a stroll through the woods, spend an afternoon fishing on the lake, or just sit and relax while taking in the stunning views. There are endless possibilities for this property, whether you choose to build your dream home or use it as a recreational retreat. With its prime location near premier golf courses, lakes, restaurants and Pillsbury state forest, you'll never run out of activities to explore. Don't miss out on this once in a lifetime opportunity to own a piece of paradise on Sylvan Lake! Request a copy of the survey.

Additional Details:

Lot Acres	26.95
Lot Dimensions	1248x1942x866x2299
School District	116
Taxes	\$1,540
Taxes with Assessments	\$1,540
Tax Year	2025

Additional Features:

Driving Directions:

N on MN 371 to CR 77/Pine Beach Rd, left onto Gregory Dr SW, property is on the left



Listed By:
Positive Realty

Affinity Real Estate Inc. participates in the Regional Multiple Listing Service of Minnesota, Inc Broker Reciprocity (sm) program, allowing us to display other broker's listings on our website. All properties are subject to prior sale, change or withdrawal.



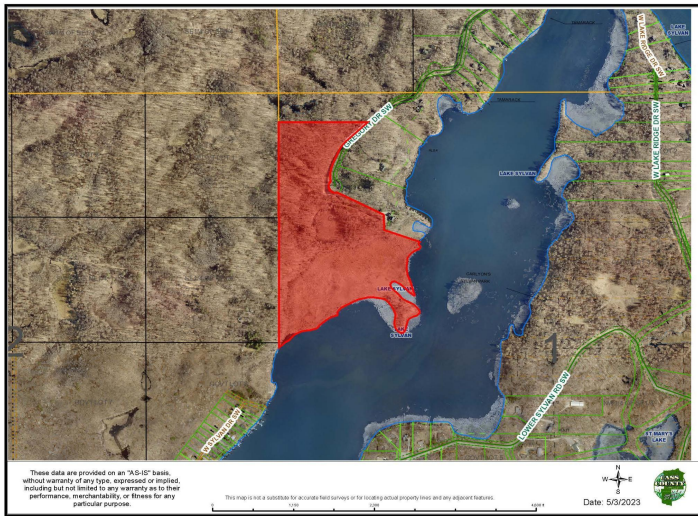
Call Affinity Real Estate

218-237-3333

info@affinityrealestate.com



Affinity Real Estate - 600 Park Avenue South - Park Rapids MN 56470



website: www.AffinityRealEstate.com | email: info@affinityrealestate.com | office: 218-237-3333 | fax: 218-237-3377



\$750,000
 MLS 6364246 Lake Land
 TBD Gregory Drive
 Pillager MN 56473



website: www.AffinityRealEstate.com | email: info@affinityrealestate.com | office: 218-237-3333 | fax: 218-237-3377



\$750,000
 MLS 6364246 Lake Land
 TBD Gregory Drive
 Pillager MN 56473



website: www.AffinityRealEstate.com | email: info@affinityrealestate.com | office: 218-237-3333 | fax: 218-237-3377



\$750,000

MLS 6364246 Lake Land
TBD Gregory Drive
Pillager MN 56473



website: www.AffinityRealEstate.com | email: info@affinityrealestate.com | office: 218-237-3333 | fax: 218-237-3377



\$750,000

MLS 6364246 Lake Land
TBD Gregory Drive
Pillager MN 56473



website: www.AffinityRealEstate.com | email: info@affinityrealestate.com | office: 218-237-3333 | fax: 218-237-3377



\$750,000

MLS 6364246 Lake Land
TBD Gregory Drive
Pillager MN 56473



website: www.AffinityRealEstate.com | email: info@affinityrealestate.com | office: 218-237-3333 | fax: 218-237-3377



\$750,000
 MLS 6364246 Lake Land
 TBD Gregory Drive
 Pillager MN 56473



website: www.AffinityRealEstate.com | email: info@affinityrealestate.com | office: 218-237-3333 | fax:218-237-3377



\$750,000

MLS 6364246 Lake Land
TBD Gregory Drive
Pillager MN 56473