



MLS 6364444 Residential

\$238,500

2,300 sq ft
4 bedrooms
3 baths

112 Park Road
Staples MN 56479

Status: Hold

Description:

Step into a remarkable ranch-style home exuding elegance with its natural cedar siding, set on a double-corner lot spanning 1.288 acres. The main house and garage grace one lot, leaving ample 3/4-acre space for leisure or future aspirations, perfect for those seeking space without sacrificing town convenience.

The property offers a three-stall garage and a convenient concrete dog kennel, blending practicality with luxury. Enjoy 1400 sq ft of opulent main-level living, with a new custom shower and upgraded kitchen featuring stainless steel appliances that enhance culinary experiences. Recent upgrades include a Forced air furnace and Central Air Unit, ensuring year-round comfort.

Descend to the lower level, where potential awaits in a generously sized room, adaptable for extra bedrooms or a cozy living area. Enhanced by a charming fireplace and large Lookout window/egress, the lower level is a welcoming retreat with a 3/4 bath for added convenience. Time for a look!!!

Additional Details:

Year Built	1968
Lot Acres	1.29
Lot Dimensions	250x160x71x71x160x249
Garage Stalls	3
School District	2170
Taxes	\$2,672
Taxes with Assessments	\$2,672
Tax Year	2022

Additional Features:

Basement: Block, Daylight/Lookout Windows, Egress Window(s), Finished, Full, Walkout **Fuel:** Electric, Natural Gas **Garage:** 3 **Heat:** Baseboard, Ductless Mini-Split, Forced Air, Fireplace(s) **Sewer:** City Sewer/Connected **Water:** City Water/Connected **Air Conditioning:** Central Air, Ductless Mini-Split

Driving Directions:

Turn north on 4th St. NE to Prairie Ave. & turn left onto Park Road to the right, and turn on Park Road to the property



Affinity Real Estate Inc. participates in the Regional Multiple Listing Service of Minnesota, Inc Broker Reciprocity (sm) program, allowing us to display other broker's listings on our website. All properties are subject to prior sale, change or withdrawal.



Call Affinity Real Estate
218-237-3333

info@affinityrealestate.com



Affinity Real Estate - 600 Park Avenue South - Park Rapids MN 56470



website: www.AffinityRealEstate.com | email: info@affinityrealestate.com | office: 218-237-3333 | fax:218-237-3377



\$238,500
MLS 6364444 Residential
112 Park Road
Staples MN 56479



website: www.AffinityRealEstate.com | email: info@affinityrealestate.com | office: 218-237-3333 | fax:218-237-3377



\$238,500
MLS 6364444 Residential
112 Park Road
Staples MN 56479



website: www.AffinityRealEstate.com | email: info@affinityrealestate.com | office: 218-237-3333 | fax:218-237-3377

Affinity
REAL ESTATE INC

\$238,500
MLS 6364444 Residential
112 Park Road
Staples MN 56479



website: www.AffinityRealEstate.com | email: info@affinityrealestate.com | office: 218-237-3333 | fax:218-237-3377

Affinity
REAL ESTATE INC

\$238,500
MLS 6364444 Residential
112 Park Road
Staples MN 56479



website: www.AffinityRealEstate.com | email: info@affinityrealestate.com | office: 218-237-3333 | fax:218-237-3377

Affinity
REAL ESTATE INC

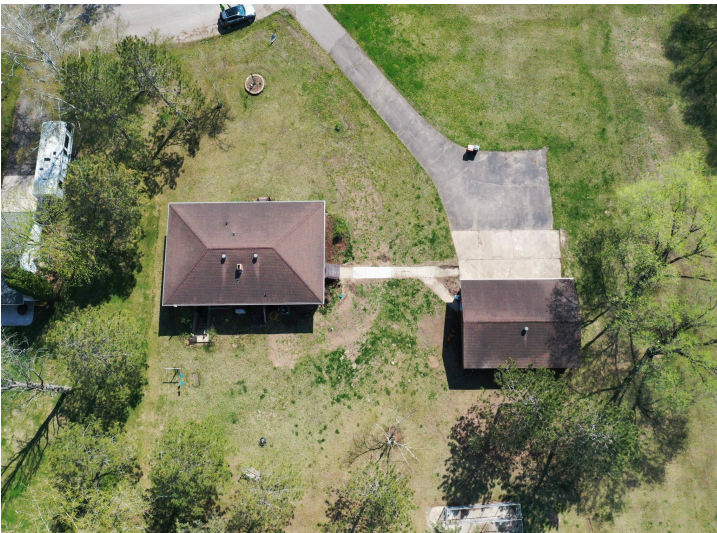
\$238,500
MLS 6364444 Residential
112 Park Road
Staples MN 56479



website: www.AffinityRealEstate.com | email: info@affinityrealestate.com | office: 218-237-3333 | fax:218-237-3377

Affinity
REAL ESTATE INC

\$238,500
MLS 6364444 Residential
112 Park Road
Staples MN 56479



website: www.AffinityRealEstate.com | email: info@affinityrealestate.com | office: 218-237-3333 | fax: 218-237-3377

Affinity
REAL ESTATE INC

\$238,500
MLS 6364444 Residential
112 Park Road
Staples MN 56479



website: www.AffinityRealEstate.com | email: info@affinityrealestate.com | office: 218-237-3333 | fax:218-237-3377



\$238,500
MLS 6364444 Residential
112 Park Road
Staples MN 56479