



MLS 6365248 Residential

\$218,800

1,795 sq ft
4 bedrooms
2 baths

1121 America Avenue
Bemidji MN 56601

Status: Closed

Description:

Welcome to your newly remodeled, move-in ready 4 bedroom, 2 bathroom home located on a corner lot in town. This charming residence boasts of well-maintained interiors and stylish finishes that create a warm and inviting ambiance. This home also features a lovely fenced yard for children and pets to play. It also comes with a large driveway that can accommodate multiple cars and a 2 stall garage. The location offers easy access to shopping, dining and entertainment options. Don't miss out on this fantastic opportunity to own this home in a prime location with potential rental possibilities! The lower level will have 2 new egress windows installed prior to closing and a 3rd new window in the den.

Additional Details:

Year Built	1940
Lot Acres	0.17
Lot Dimensions	100x75
Garage Stalls	2
School District	31
Taxes	\$1,404
Taxes with Assessments	\$1,404
Tax Year	2023

Additional Features:

Basement: Egress Window(s), Finished, Full **Fuel:** Natural Gas **Garage:** 2 **Heat:** Forced Air **Sewer:** City Sewer/Connected **Water:** City Water/Connected **Air Conditioning:** Central Air

Driving Directions:

South on Irvine Ave, left on 12th St, right on America Ave.



Listed By:
Coldwell Banker Crown Realtors

Affinity Real Estate Inc. participates in the Regional Multiple Listing Service of Minnesota, Inc Broker Reciprocity (sm) program, allowing us to display other broker's listings on our website. All properties are subject to prior sale, change or withdrawal.



Call Affinity Real Estate

218-237-3333

info@affinityrealestate.com



Affinity Real Estate - 600 Park Avenue South - Park Rapids MN 56470



website: www.AffinityRealEstate.com | email: info@affinityrealestate.com | office: 218-237-3333 | fax: 218-237-3377

Affinity
REAL ESTATE INC

\$218,800
MLS 6365248 Residential
1121 America Avenue
Bemidji MN 56601



website: www.AffinityRealEstate.com | email: info@affinityrealestate.com | office: 218-237-3333 | fax: 218-237-3377

Affinity
REAL ESTATE INC

\$218,800
MLS 6365248 Residential
1121 America Avenue
Bemidji MN 56601



website: www.AffinityRealEstate.com | email: info@affinityrealestate.com | office: 218-237-3333 | fax: 218-237-3377

Affinity
REAL ESTATE INC

\$218,800
MLS 6365248 Residential
1121 America Avenue
Bemidji MN 56601



website: www.AffinityRealEstate.com | email: info@affinityrealestate.com | office: 218-237-3333 | fax: 218-237-3377



\$218,800
MLS 6365248 Residential
1121 America Avenue
Bemidji MN 56601



website: www.AffinityRealEstate.com | email: info@affinityrealestate.com | office: 218-237-3333 | fax: 218-237-3377

Affinity
REAL ESTATE INC

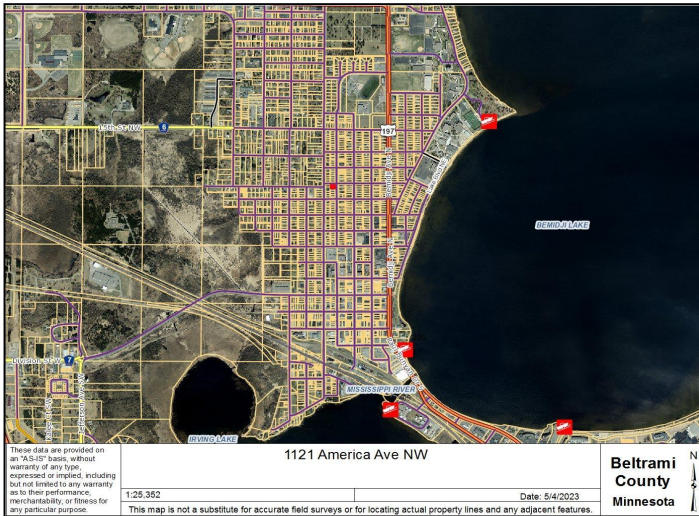
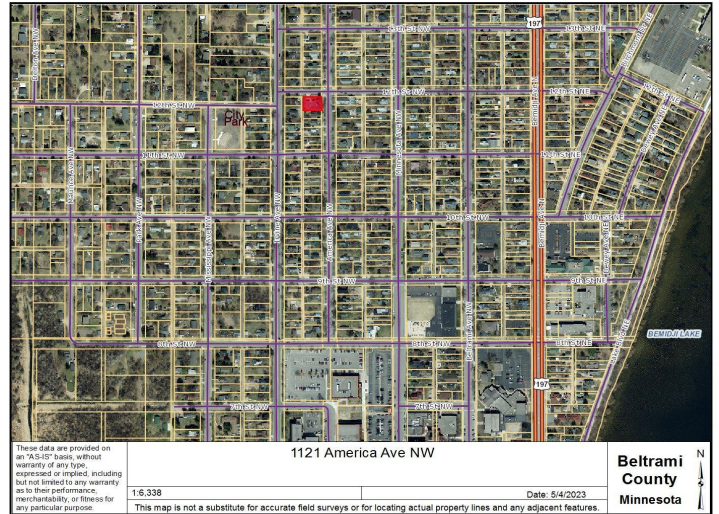
\$218,800
MLS 6365248 Residential
1121 America Avenue
Bemidji MN 56601



website: www.AffinityRealEstate.com | email: info@affinityrealestate.com | office: 218-237-3333 | fax: 218-237-3377



\$218,800
 MLS 6365248 Residential
 1121 America Avenue
 Bemidji MN 56601



website: www.AffinityRealEstate.com | email: info@affinityrealestate.com | office: 218-237-3333 | fax: 218-237-3377



\$218,800
 MLS 6365248 Residential
 1121 America Avenue
 Bemidji MN 56601