



MLS 6366778 Residential

**\$339,800**

2,231 sq ft  
4 bedrooms  
3 baths

2416 Pearl Drive  
Bemidji MN 56601

Status: Closed

**Description:**

Are you looking for a home with an amazing owner's suite and an extra triple insulated garage. If so, this is the home for you! This 4 bed 3 bath home has been well cared for inside and out. You will appreciate all the little extras like; a touch of shiplap here and there, solid surface counter tops, stainless appliances and 2 newly updated bathrooms. The backyard has a ton of room to run and play and everyone will love the cute playhouse! This home is conveniently located so close to Lake Bemidji, The Country Club, The State Park and Movil Maze.

**Additional Details:**

Year Built	2001
Lot Acres	1.03
Lot Dimensions	150x3001131
Garage Stalls	5
School District	31
Taxes	\$2,886
Taxes with Assessments	\$2,886
Tax Year	2023

**Additional Features:**

**Basement:** Daylight/Lookout Windows, Egress Window(s), Finished, Full **Fuel:** Natural Gas **Garage:** 5 **Heat:** Forced Air **Sewer:** Private Sewer  
**Water:** Private **Air Conditioning:** Central Air

**Driving Directions:**

North on Bemidji Rd, East on Sumac Rd, immediate Right on Country Club Rd.



Listed By:  
Coldwell Banker Crown Realtors

Affinity Real Estate Inc. participates in the Regional Multiple Listing Service of Minnesota, Inc Broker Reciprocity (sm) program, allowing us to display other broker's listings on our website. All properties are subject to prior sale, change or withdrawal.



**Call Affinity Real Estate**

**218-237-3333**

**info@affinityrealestate.com**



**Affinity Real Estate - 600 Park Avenue South - Park Rapids MN 56470**





website: [www.AffinityRealEstate.com](http://www.AffinityRealEstate.com) | email: [info@affinityrealestate.com](mailto:info@affinityrealestate.com) | office: 218-237-3333 | fax: 218-237-3377



**\$339,800**  
MLS 6366778 Residential  
2416 Pearl Drive  
Bemidji MN 56601



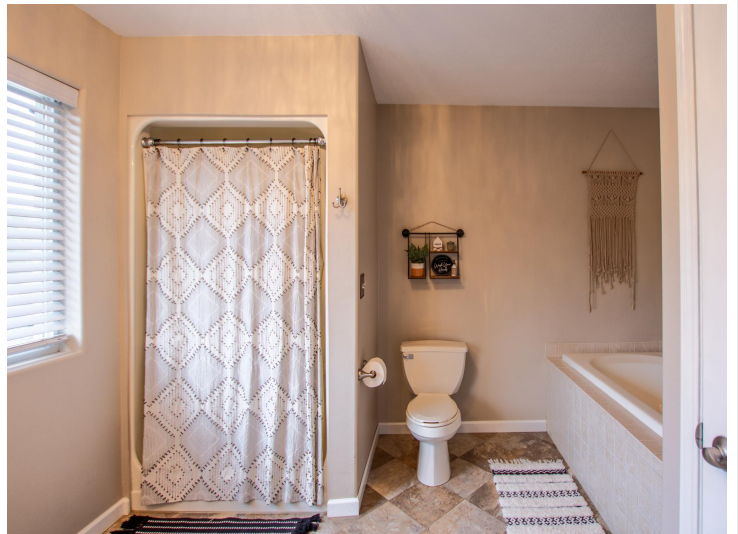


website: [www.AffinityRealEstate.com](http://www.AffinityRealEstate.com) | email: [info@affinityrealestate.com](mailto:info@affinityrealestate.com) | office: 218-237-3333 | fax: 218-237-3377

**Affinity**  
REAL ESTATE INC

**\$339,800**  
MLS 6366778 Residential  
2416 Pearl Drive  
Bemidji MN 56601





website: [www.AffinityRealEstate.com](http://www.AffinityRealEstate.com) | email: [info@affinityrealestate.com](mailto:info@affinityrealestate.com) | office: 218-237-3333 | fax: 218-237-3377

**Affinity**  
REAL ESTATE INC

**\$339,800**  
MLS 6366778 Residential  
2416 Pearl Drive  
Bemidji MN 56601





website: [www.AffinityRealEstate.com](http://www.AffinityRealEstate.com) | email: [info@affinityrealestate.com](mailto:info@affinityrealestate.com) | office: 218-237-3333 | fax: 218-237-3377

**Affinity**  
REAL ESTATE INC

**\$339,800**  
MLS 6366778 Residential  
2416 Pearl Drive  
Bemidji MN 56601





website: [www.AffinityRealEstate.com](http://www.AffinityRealEstate.com) | email: [info@affinityrealestate.com](mailto:info@affinityrealestate.com) | office: 218-237-3333 | fax: 218-237-3377

**Affinity**  
REAL ESTATE INC

**\$339,800**  
MLS 6366778 Residential  
2416 Pearl Drive  
Bemidji MN 56601



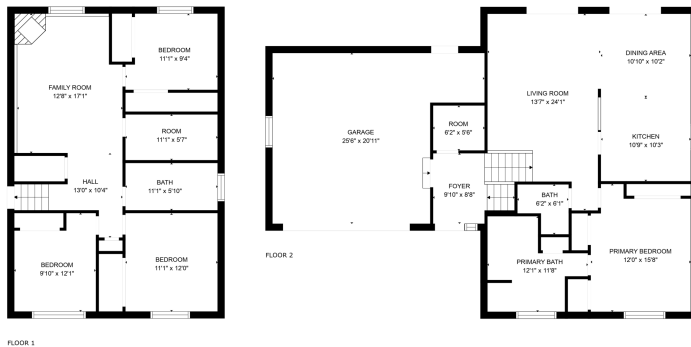


website: [www.AffinityRealEstate.com](http://www.AffinityRealEstate.com) | email: [info@affinityrealestate.com](mailto:info@affinityrealestate.com) | office: 218-237-3333 | fax: 218-237-3377

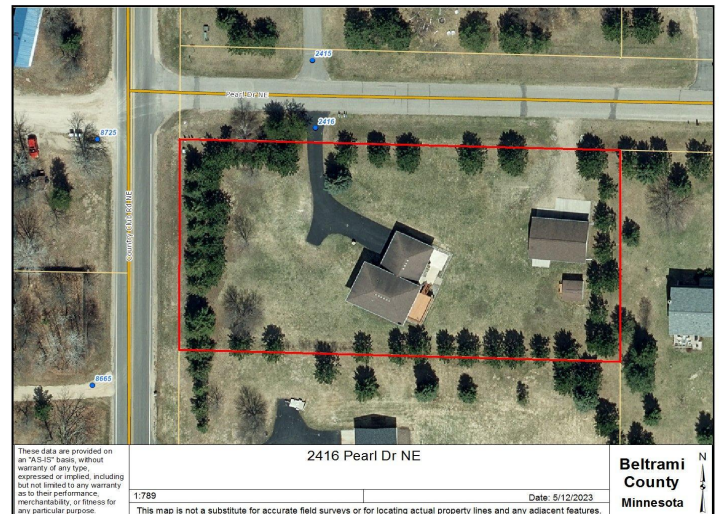
**Affinity**  
REAL ESTATE INC

**\$339,800**  
MLS 6366778 Residential  
2416 Pearl Drive  
Bemidji MN 56601





GROSS INTERNAL AREA:  
 FLOOR 1: 892 sq. ft. FLOOR 2: 987 sq. ft.  
 EXCLUDED AREAS: GARAGE: 437 sq. ft.  
 TOTAL: 1,379 sq. ft.  
 MEASUREMENTS ARE CALCULATED BY COURTESY TECHNOLOGY. FIGURES ARE APPROXIMATE AND NOT GUARANTEED.

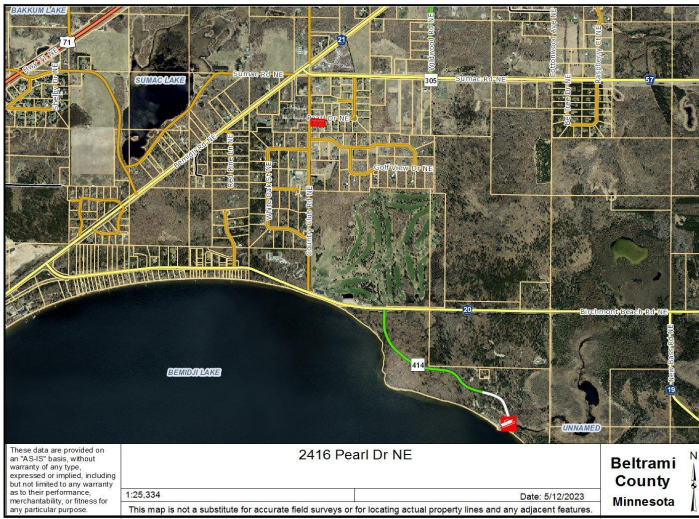


website: [www.AffinityRealEstate.com](http://www.AffinityRealEstate.com) | email: [info@affinityrealestate.com](mailto:info@affinityrealestate.com) | office: 218-237-3333 | fax: 218-237-3377

**Affinity**  
REAL ESTATE INC

**\$339,800**  
MLS 6366778 Residential  
2416 Pearl Drive  
Bemidji MN 56601





website: [www.AffinityRealEstate.com](http://www.AffinityRealEstate.com) | email: [info@affinityrealestate.com](mailto:info@affinityrealestate.com) | office: 218-237-3333 | fax: 218-237-3377



**\$339,800**  
 MLS 6366778 Residential  
 2416 Pearl Drive  
 Bemidji MN 56601