



MLS 6367131 Lake Home

**\$399,900**

3,360 sq ft  
3 bedrooms  
3 baths

2434 Rice Portage Trail  
Backus MN 56435

Waterfront: Big Portage

Status: Hold

**Description:**

2434 Rice Portage Trail NW is a beautiful lakefront property located near Backus Minnesota. This cabin features three bedrooms, three bathrooms, vaulted knotty pine ceilings, stainless appliances, and tile floors. Enjoy breathtaking views of the lake from the spacious deck. With easy access to the lake you can spend your days swimming, fishing or boating. This is the perfect getaway for those looking to escape the hustle and bustle of the city and reconnect with nature. Property can be sold mostly furnished.

**Additional Details:**

Year Built	2011
Lot Acres	0.4
Lot Dimensions	106x169x85x149
School District	2174
Taxes	\$1,800
Taxes with Assessments	\$1,866
Tax Year	2022

**Additional Features:**

**Basement:** Slab **Fuel:** Electric, Propane **Heat:** Forced Air, Fireplace(s) **Sewer:** Private Sewer, Tank with Drainage Field **Water:** Drilled, Well **Air Conditioning:** Central Air

**Driving Directions:**

371 north past Backus to Godfrey Hardware, east on Hwy 87 approx. 5 miles to 24th, left to the "Y" in the road to left to the home.



Listed By:  
Northland Sotheby's International Realty

Affinity Real Estate Inc. participates in the Regional Multiple Listing Service of Minnesota, Inc Broker Reciprocity (sm) program, allowing us to display other broker's listings on our website. All properties are subject to prior sale, change or withdrawal.



**Call Affinity Real Estate**

**218-237-3333**

**info@affinityrealestate.com**



**Affinity Real Estate - 600 Park Avenue South - Park Rapids MN 56470**





website: [www.AffinityRealEstate.com](http://www.AffinityRealEstate.com) | email: [info@affinityrealestate.com](mailto:info@affinityrealestate.com) | office: 218-237-3333 | fax: 218-237-3377

**Affinity**  
REAL ESTATE INC

**\$399,900**  
MLS 6367131 Lake Home  
2434 Rice Portage Trail  
Backus MN 56435





website: [www.AffinityRealEstate.com](http://www.AffinityRealEstate.com) | email: [info@affinityrealestate.com](mailto:info@affinityrealestate.com) | office: 218-237-3333 | fax: 218-237-3377

**Affinity**  
REAL ESTATE INC

**\$399,900**  
MLS 6367131 Lake Home  
2434 Rice Portage Trail  
Backus MN 56435





website: [www.AffinityRealEstate.com](http://www.AffinityRealEstate.com) | email: [info@affinityrealestate.com](mailto:info@affinityrealestate.com) | office: 218-237-3333 | fax: 218-237-3377

**Affinity**  
REAL ESTATE INC

**\$399,900**  
MLS 6367131 Lake Home  
2434 Rice Portage Trail  
Backus MN 56435





website: [www.AffinityRealEstate.com](http://www.AffinityRealEstate.com) | email: [info@affinityrealestate.com](mailto:info@affinityrealestate.com) | office: 218-237-3333 | fax: 218-237-3377

**Affinity**  
REAL ESTATE INC

**\$399,900**  
MLS 6367131 Lake Home  
2434 Rice Portage Trail  
Backus MN 56435





website: [www.AffinityRealEstate.com](http://www.AffinityRealEstate.com) | email: [info@affinityrealestate.com](mailto:info@affinityrealestate.com) | office: 218-237-3333 | fax: 218-237-3377

**Affinity**  
REAL ESTATE INC

**\$399,900**  
MLS 6367131 Lake Home  
2434 Rice Portage Trail  
Backus MN 56435



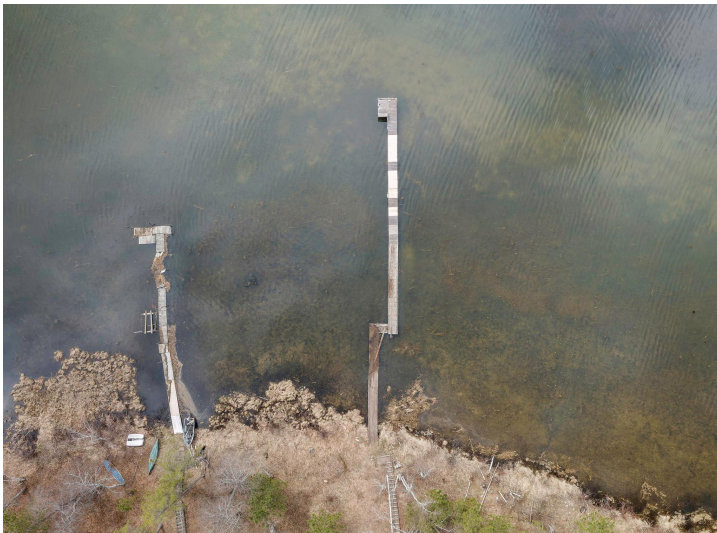


website: [www.AffinityRealEstate.com](http://www.AffinityRealEstate.com) | email: [info@affinityrealestate.com](mailto:info@affinityrealestate.com) | office: 218-237-3333 | fax: 218-237-3377



**\$399,900**  
 MLS 6367131 Lake Home  
 2434 Rice Portage Trail  
 Backus MN 56435





website: [www.AffinityRealEstate.com](http://www.AffinityRealEstate.com) | email: [info@affinityrealestate.com](mailto:info@affinityrealestate.com) | office: 218-237-3333 | fax: 218-237-3377



**\$399,900**  
 MLS 6367131 Lake Home  
 2434 Rice Portage Trail  
 Backus MN 56435





website: [www.AffinityRealEstate.com](http://www.AffinityRealEstate.com) | email: [info@affinityrealestate.com](mailto:info@affinityrealestate.com) | office: 218-237-3333 | fax: 218-237-3377



**\$399,900**

MLS 6367131 Lake Home  
2434 Rice Portage Trail  
Backus MN 56435