



MLS 6369215 Lake Land

\$234,900

Description:

HERE IT IS ... The highly desired and seldom available LAKESHORE WITH ACREAGE. Located in the heart of Central Minnesota's Beautiful Lakes Area. 18.3 acres with approx 300 +/- feet of lakeshore on beautiful Mayo Lake. Opportunity is endless, ripe with development potential, or build your Up North Get-A-Way and enjoy the elusive lake home with privacy. Located less than a 1/2 mile from the new Lakes Tavern and a short drive to The Preserve golf course, The Shops at Nisswa, Down Town Pequot Lakes & the Paul Bunyan Bike Trail.

Additional Details:

Lot Acres	18.3
Lot Dimensions	300x708x918x827x918
School District	186
Taxes	\$1,442
Taxes with Assessments	\$4,676
Tax Year	2024

Additional Features:

Driving Directions:

From Nisswa, north on hwy 371 to West (Left) on Patriot Ave., to west (Left) on county Rd. 168, to sign and property on the south (Left) side of the road.



Listed By:
Kurilla Real Estate LTD

Affinity Real Estate Inc. participates in the Regional Multiple Listing Service of Minnesota, Inc Broker Reciprocity (sm) program, allowing us to display other broker's listings on our website. All properties are subject to prior sale, change or withdrawal.



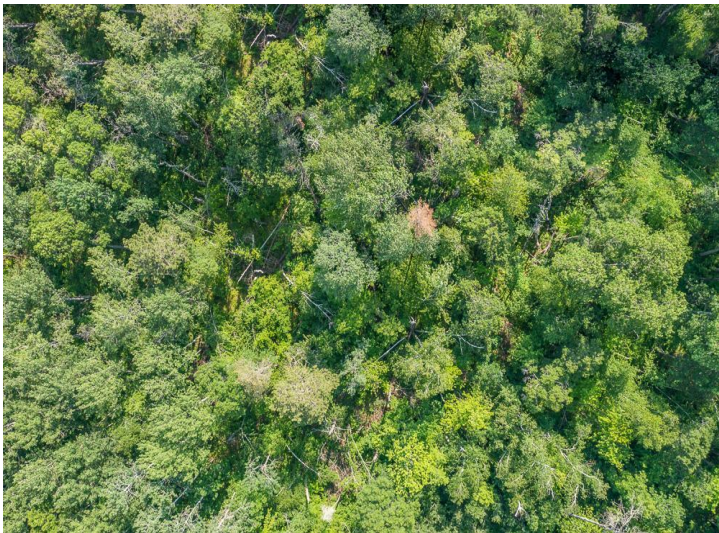
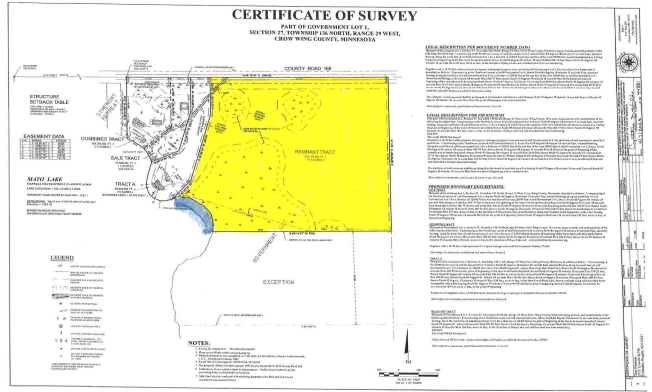
Call Affinity Real Estate

218-237-3333

info@affinityrealestate.com



Affinity Real Estate - 600 Park Avenue South - Park Rapids MN 56470



website: www.AffinityRealEstate.com | email: info@affinityrealestate.com | office: 218-237-3333 | fax: 218-237-3377



\$234,900
 MLS 6369215 Lake Land
 TBD County Road 168
 Pequot Lakes MN 56472



website: www.AffinityRealEstate.com | email: info@affinityrealestate.com | office: 218-237-3333 | fax:218-237-3377



\$234,900
MLS 6369215 Lake Land
TBD County Road 168
Pequot Lakes MN 56472



website: www.AffinityRealEstate.com | email: info@affinityrealestate.com | office: 218-237-3333 | fax:218-237-3377



\$234,900
MLS 6369215 Lake Land
TBD County Road 168
Pequot Lakes MN 56472