

MLS 6374114 Lake Land

**\$25,900**

**Description:**

An Affordable Building Site with No Covenants? That's almost unheard of these days. Well, look no further! Whether you're looking to build a home, a house, or a storage building to hold your toys, the possibilities are endless! This 2.5 Acre lot features mature trees to the north & a prime location just down the road from the Paul Lake public access. The potential this lot has is truly unmatched. Schedule a showing today & let your imagination run wild.

**Additional Details:**

Lot Acres	2.5
Lot Dimensions	330* x 289* x 329* x 288*
School District	549
Taxes	\$852
Taxes with Assessments	\$932
Tax Year	2023

**Additional Features:**

**Driving Directions:**

From Dent MN, Take 108 East. After about 1/2 Mile, turn left onto 380th Ave / Wolf Lake Rd. Continue for about 1.5 Miles, or until you pass 423rd St, & your destination will be the second Parcel on the left.



Listed By:  
Jack Chivers Realty

Affinity Real Estate Inc. participates in the Regional Multiple Listing Service of Minnesota, Inc Broker Reciprocity (sm) program, allowing us to display other broker's listings on our website. All properties are subject to prior sale, change or withdrawal.



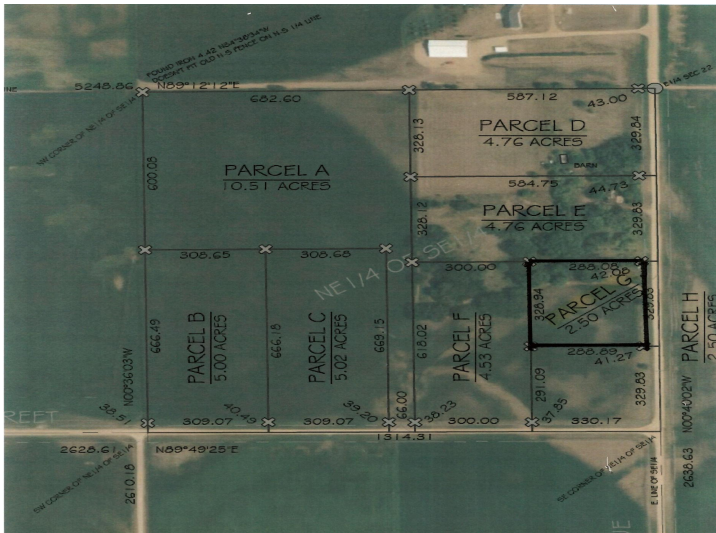
**Call Affinity Real Estate**

**218-237-3333**

**info@affinityrealestate.com**



**Affinity Real Estate - 600 Park Avenue South - Park Rapids MN 56470**



website: [www.AffinityRealEstate.com](http://www.AffinityRealEstate.com) | email: [info@affinityrealestate.com](mailto:info@affinityrealestate.com) | office: 218-237-3333 | fax: 218-237-3377



**\$25,900**

MLS 6374114 Lake Land  
422XX Lot G 380th Avenue  
Dent MN 56573