

MLS 6376286 Land

\$69,000

1.54 Acres

Raw Land

XX Lilac St

Pequot Lakes MN 56472

Status: Active

Description:

(description unavailable)

Additional Details:

| | |
|------------------------|------------------|
| Lot Acres | 1.54 |
| Lot Dimensions | 170x3735x170x375 |
| School District | 186 |
| Taxes | \$230 |
| Taxes with Assessments | \$230 |
| Tax Year | 2023 |

Additional Features:

Driving Directions:

Great commercial property located in Pequot Lakes off Patriot Ave for great visibility. Add'l adjoining lots available.



Listed By:
Lakes & Leisure Realty

Affinity Real Estate Inc. participates in the Regional Multiple Listing Service of Minnesota, Inc Broker Reciprocity (sm) program, allowing us to display other broker's listings on our website. All properties are subject to prior sale, change or withdrawal.



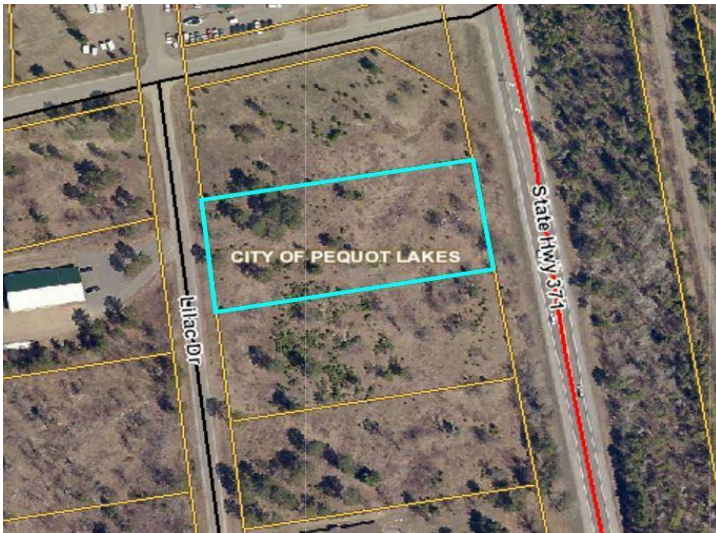
Call Affinity Real Estate

218-237-3333

info@affinityrealestate.com



Affinity Real Estate - 600 Park Avenue South - Park Rapids MN 56470



website: www.AffinityRealEstate.com | email: info@affinityrealestate.com | office: 218-237-3333 | fax: 218-237-3377



\$69,000
MLS 6376286 Land
XX Lilac St
Pequot Lakes MN 56472