

MLS 6376324 Land

**\$69,000**

1.49 Acres

Raw Land

Pillsbury and Lilac XX  
Pequot Lakes MN 56472

Status: Expired

**Description:**

(description unavailable)

**Additional Details:**

|                        |                 |
|------------------------|-----------------|
| Lot Acres              | 1.49            |
| Lot Dimensions         | 345x189x364x186 |
| School District        | 186             |
| Taxes                  | \$672           |
| Taxes with Assessments | \$672           |
| Tax Year               | 2023            |

**Additional Features:**

**Driving Directions:**

Turn



Listed By:  
Lakes & Leisure Realty

Affinity Real Estate Inc. participates in the Regional Multiple Listing Service of Minnesota, Inc Broker Reciprocity (sm) program, allowing us to display other broker's listings on our website. All properties are subject to prior sale, change or withdrawal.



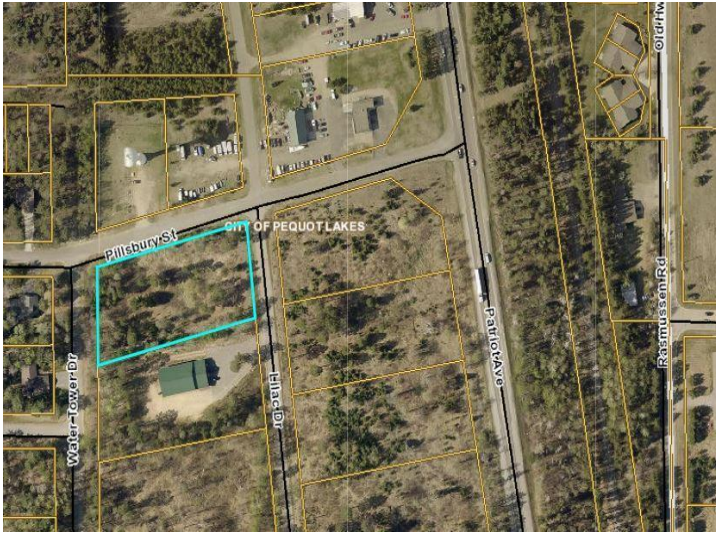
**Call Affinity Real Estate**

**218-237-3333**

**info@affinityrealestate.com**



**Affinity Real Estate - 600 Park Avenue South - Park Rapids MN 56470**



website: [www.AffinityRealEstate.com](http://www.AffinityRealEstate.com) | email: [info@affinityrealestate.com](mailto:info@affinityrealestate.com) | office: 218-237-3333 | fax: 218-237-3377



**\$69,000**  
MLS 6376324 Land  
Pillsbury and Lilac XX  
Pequot Lakes MN 56472