



MLS 6376505 Residential

\$515,800

2,814 sq ft
4 bedrooms
3 baths

4141 Cartway Road
Bemidji MN 56601

Status: Closed

Description:

This multi-level home sits on nearly 40 acres of fenced pasture and tree cover. The home has 4 bedrooms, including the beautiful primary suite on the main floor. The sunroom brings in lots of natural light and the kitchen is nicely updated. Walking in from your attached double garage you will find a nice entry with laundry and plenty of closet space. Multiple living spaces and tons of storage throughout, along with a wood burning fireplace in the lower level family room and multiple heat sources. The outside of the home has just been freshly stained. This property also offers a 36x60 shop, which 1/2 is finished and heated and the other 1/2 is covered for storage along with multiple outbuildings and lean-to's, 2 wells on the property and a new septic system installed in 2019. You want privacy, you want horses, you want a hobby farm...take your pick, this property offers it all to you! (Kinetico water system doesn't stay with home.)

Additional Details:

Year Built	1980
Lot Acres	38.59
Lot Dimensions	1187x612x138x666x1346x1310
Garage Stalls	4
School District	31
Taxes	\$4,087
Taxes with Assessments	\$4,087
Tax Year	2023

Additional Features:

Basement: Block, Finished **Fuel:** Electric, Wood **Garage:** 4 **Heat:** Forced Air, Fireplace(s), Heat Pump, Radiant Floor, Outdoor Furnace
Sewer: Private Sewer, Septic System Compliant - Yes **Water:** Private, Well **Air Conditioning:** Central Air

Driving Directions:

West on Hwy 2 to right on Cty Rd 9, right on Cartway to house on left.



Listed By:
Coldwell Banker Crown Realtors

Affinity Real Estate Inc. participates in the Regional Multiple Listing Service of Minnesota, Inc Broker Reciprocity (sm) program, allowing us to display other broker's listings on our website. All properties are subject to prior sale, change or withdrawal.



Call Affinity Real Estate

218-237-3333

info@affinityrealestate.com



Affinity Real Estate - 600 Park Avenue South - Park Rapids MN 56470



website: www.AffinityRealEstate.com | email: info@affinityrealestate.com | office: 218-237-3333 | fax: 218-237-3377

Affinity
REAL ESTATE INC

\$515,800
MLS 6376505 Residential
4141 Cartway Road
Bemidji MN 56601



website: www.AffinityRealEstate.com | email: info@affinityrealestate.com | office: 218-237-3333 | fax: 218-237-3377

Affinity
REAL ESTATE INC

\$515,800
MLS 6376505 Residential
4141 Cartway Road
Bemidji MN 56601



website: www.AffinityRealEstate.com | email: info@affinityrealestate.com | office: 218-237-3333 | fax: 218-237-3377

Affinity
REAL ESTATE INC

\$515,800
MLS 6376505 Residential
4141 Cartway Road
Bemidji MN 56601



website: www.AffinityRealEstate.com | email: info@affinityrealestate.com | office: 218-237-3333 | fax: 218-237-3377

Affinity
REAL ESTATE INC

\$515,800
MLS 6376505 Residential
4141 Cartway Road
Bemidji MN 56601



website: www.AffinityRealEstate.com | email: info@affinityrealestate.com | office: 218-237-3333 | fax: 218-237-3377

Affinity
REAL ESTATE INC

\$515,800
MLS 6376505 Residential
4141 Cartway Road
Bemidji MN 56601



website: www.AffinityRealEstate.com | email: info@affinityrealestate.com | office: 218-237-3333 | fax: 218-237-3377



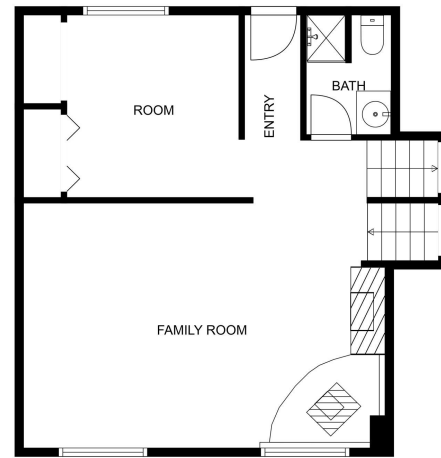
\$515,800
 MLS 6376505 Residential
 4141 Cartway Road
 Bemidji MN 56601



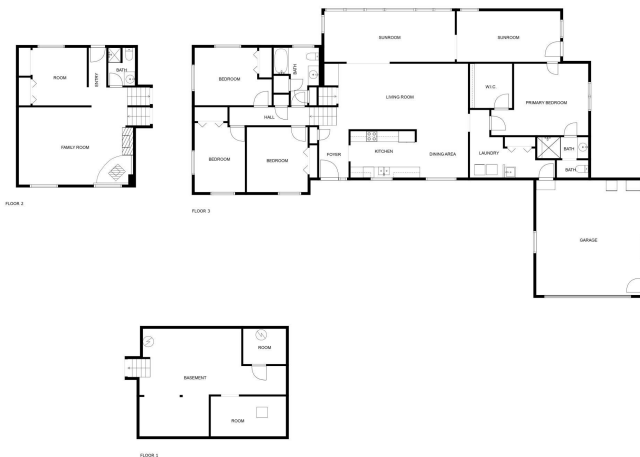
website: www.AffinityRealEstate.com | email: info@affinityrealestate.com | office: 218-237-3333 | fax: 218-237-3377



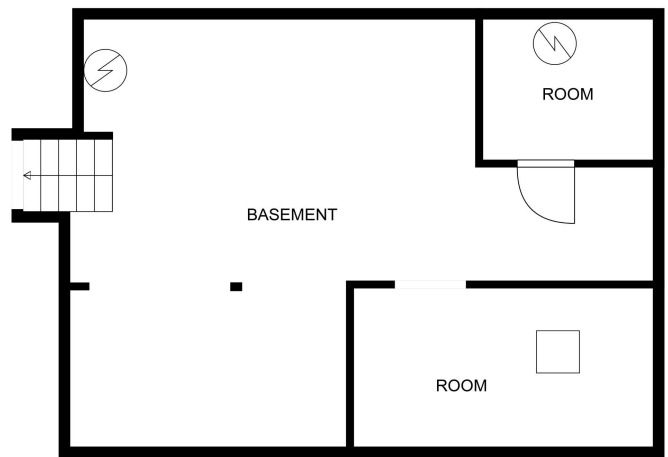
\$515,800
 MLS 6376505 Residential
 4141 Cartway Road
 Bemidji MN 56601



MEASUREMENTS ARE CALCULATED BY CUBICASA TECHNOLOGY, DEEMED HIGHLY RELIABLE BUT NOT GUARANTEED.



MEASUREMENTS ARE CALCULATED BY CUBICASA TECHNOLOGY, DEEMED HIGHLY RELIABLE BUT NOT GUARANTEED.

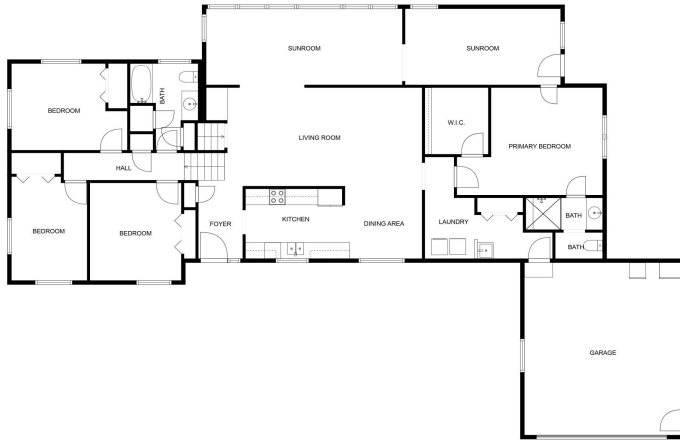


MEASUREMENTS ARE CALCULATED BY CUBICASA TECHNOLOGY, DEEMED HIGHLY RELIABLE BUT NOT GUARANTEED.

website: www.AffinityRealEstate.com | email: info@affinityrealestate.com | office: 218-237-3333 | fax: 218-237-3377



\$515,800
 MLS 6376505 Residential
 4141 Cartway Road
 Bemidji MN 56601



MEASUREMENTS ARE CALCULATED BY CURSCASA TECHNOLOGY. DEEMED HIGHLY RELIABLE BUT NOT GUARANTEED.

website: www.AffinityRealEstate.com | email: info@affinityrealestate.com | office: 218-237-3333 | fax: 218-237-3377



\$515,800
 MLS 6376505 Residential
 4141 Cartway Road
 Bemidji MN 56601