



MLS 6377144 Land

\$22,000

2.24 Acres
Raw Land

L6B1 Sportsmen Road
Bemidji MN 56601

Status: Hold

Description:

Affordable new development with level 2+ acre lots just 5 miles south of town. Come be a part of Hunters Point Development.

Additional Details:

| | |
|------------------------|--------------|
| Lot Acres | 2.24 |
| Lot Dimensions | 222x437 |
| School District | 31 |
| Taxes | (unreported) |
| Taxes with Assessments | (unreported) |
| Tax Year | 2023 |

Additional Features:

Driving Directions:

South on Hwy 71, right on N Plantagenet Rd SW, right on Beltrami Line Rd, right on Sportsman Rd, lot on the left.



Listed By:
CENTURY 21 Dickinson Realtors

Affinity Real Estate Inc. participates in the Regional Multiple Listing Service of Minnesota, Inc Broker Reciprocity (sm) program, allowing us to display other broker's listings on our website. All properties are subject to prior sale, change or withdrawal.



Call Affinity Real Estate

218-237-3333

info@affinityrealestate.com



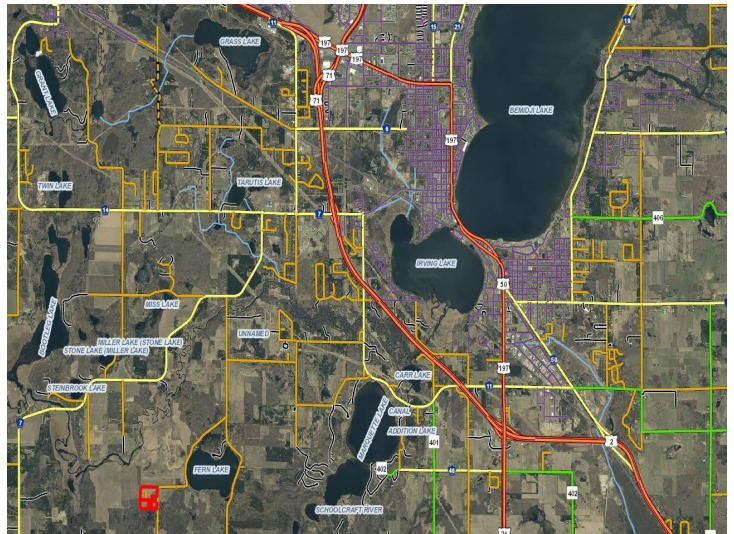
Affinity Real Estate - 600 Park Avenue South - Park Rapids MN 56470



**Great Walkout
Opportunity On
Lots 5 & 6!**



**New Construction Is Happening
Out There Right Now!**



website: www.AffinityRealEstate.com | email: info@affinityrealestate.com | office: 218-237-3333 | fax: 218-237-3377



\$22,000
MLS 6377144 Land
L6B1 Sportsmen Road
Bemidji MN 56601



website: www.AffinityRealEstate.com | email: info@affinityrealestate.com | office: 218-237-3333 | fax: 218-237-3377



\$22,000
MLS 6377144 Land
L6B1 Sportsmen Road
Bemidji MN 56601