



MLS 6377154 Land

\$20,000

2.44 Acres
Raw Land

L5B2 Little Doe Court
Bemidji MN 56601

Status: Expired

Description:

Affordable new development with level 2+ acre lots just 5 miles south of town. Come be a part of Hunters Point Development.

Additional Details:

Lot Acres	2.44
Lot Dimensions	263x442
School District	31
Taxes	\$72
Taxes with Assessments	\$72
Tax Year	2023

Additional Features:

Driving Directions:

South on Hwy 71, right on N Plantagenet Rd SW, right on Beltrami Line Rd, right on Sportsman Rd, left on Trophy Buck Rd, right on Little Doe Ct.



Listed By:
CENTURY 21 Dickinson Realtors

Affinity Real Estate Inc. participates in the Regional Multiple Listing Service of Minnesota, Inc Broker Reciprocity (sm) program, allowing us to display other broker's listings on our website. All properties are subject to prior sale, change or withdrawal.



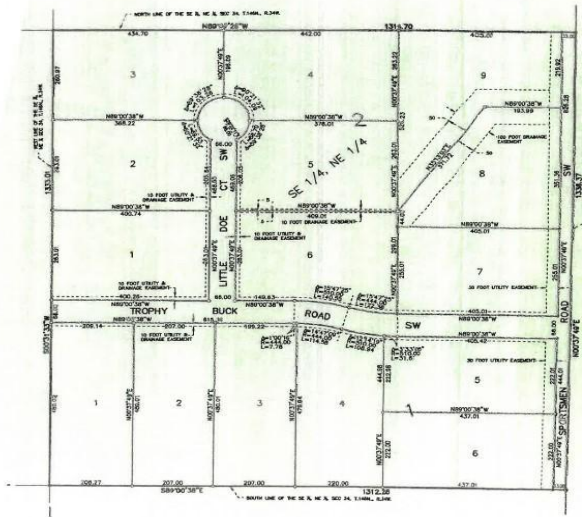
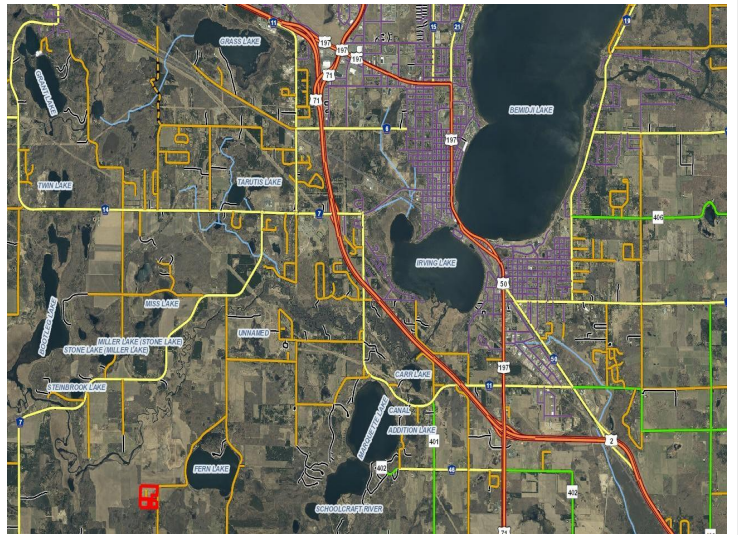
Call Affinity Real Estate

218-237-3333

info@affinityrealestate.com



Affinity Real Estate - 600 Park Avenue South - Park Rapids MN 56470



website: www.AffinityRealEstate.com | email: info@affinityrealestate.com | office: 218-237-3333 | fax: 218-237-3377



\$20,000
 MLS 6377154 Land
 L5B2 Little Doe Court
 Bemidji MN 56601