



MLS 6377623 Commercial

\$550,000

915 21st Street
Bemidji MN 56601

Status: Hold

Description:

Established facility with 9+ bedrooms, 3 bathrooms. Open floor plan with spacious rooms. All main floor living, Large kitchen/dining area with patio out back perfect for meeting & get togethers. Office space and more, this building is move-in ready for your business to get started today. New sprinkler system installed and up to code.

Additional Details:

Year Built	2008
Lot Acres	0.79
Lot Dimensions	150x220
School District	31
Taxes	\$5,998
Taxes with Assessments	\$5,998
Tax Year	2023

Additional Features:

Basement: None **Fuel:** Natural Gas **Heat:** Boiler, Forced Air **Sewer:** City Sewer/Connected **Water:** City Water/Connected

Driving Directions:

Northeast Corner of Norton Ave & 21st St



Listed By:
RE/MAX Bemidji

Affinity Real Estate Inc. participates in the Regional Multiple Listing Service of Minnesota, Inc Broker Reciprocity (sm) program, allowing us to display other broker's listings on our website. All properties are subject to prior sale, change or withdrawal.



Call Affinity Real Estate

218-237-3333

info@affinityrealestate.com

MLS



Affinity Real Estate - 600 Park Avenue South - Park Rapids MN 56470



website: www.AffinityRealEstate.com | email: info@affinityrealestate.com | office: 218-237-3333 | fax: 218-237-3377



\$550,000
 MLS 6377623 Commercial
 915 21st Street
 Bemidji MN 56601



website: www.AffinityRealEstate.com | email: info@affinityrealestate.com | office: 218-237-3333 | fax: 218-237-3377

Affinity
REAL ESTATE INC

\$550,000
MLS 6377623 Commercial
915 21st Street
Bemidji MN 56601



website: www.AffinityRealEstate.com | email: info@affinityrealestate.com | office: 218-237-3333 | fax: 218-237-3377

Affinity
REAL ESTATE INC

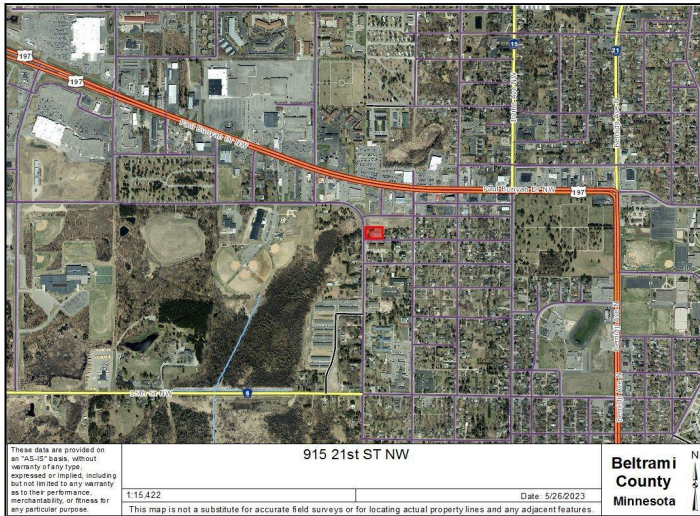
\$550,000
MLS 6377623 Commercial
915 21st Street
Bemidji MN 56601



website: www.AffinityRealEstate.com | email: info@affinityrealestate.com | office: 218-237-3333 | fax: 218-237-3377

Affinity
REAL ESTATE INC

\$550,000
MLS 6377623 Commercial
915 21st Street
Bemidji MN 56601



website: www.AffinityRealEstate.com | email: info@affinityrealestate.com | office: 218-237-3333 | fax: 218-237-3377



\$550,000
 MLS 6377623 Commercial
 915 21st Street
 Bemidji MN 56601