



MLS 6378288 Residential

\$449,900

3,396 sq ft
5 bedrooms
4 baths

31335 Cherokee Trail
Breezy Point MN 56472

Status: Pending

Description:

2.5 acres in Breezy Point! This 3,300+ sq. foot home features 5 bedrooms, 4 bathrooms, 3 car heated and insulated garage, a bar/entertainment room, and an unfinished bonus game room. The deck has been stained and a new railing added. The master bathroom has been completely redone! With a second kitchen in the basement for a possible rental option or the perfect in-law suite. Many updates include new carpet in main level bedrooms, hardwood floors, an updated kitchen, new windows, and a new roof in 2019. A walkout basement with a large paved patio and a spacious private backyard with a large garden. Paired with a wrap-around deck this home is perfect for entertaining. Minutes from award-winning restaurants and golf as well as in Pequot Lakes School district. The home is modular stick-built. This is house has a lot to offer and is worth seeing!

Additional Details:

Year Built	1999
Lot Acres	2.54
Lot Dimensions	305x493x290x392
Garage Stalls	3
School District	186
Taxes	\$2,382
Taxes with Assessments	\$2,382
Tax Year	2022

Additional Features:

Basement: Daylight/Lookout Windows, Finished, Full, Storage Space, Walkout **Fuel:** Natural Gas **Garage:** 3 **Heat:** Dual, Forced Air, Radiant Floor
Sewer: Private Sewer **Water:** Private, Well **Air Conditioning:** Central Air

Driving Directions:

Going North on Ranchette, take a left onto Cherokee Trail and the property will be on the right.



Listed By:
Woods to Water Real Estate

Affinity Real Estate Inc. participates in the Regional Multiple Listing Service of Minnesota, Inc Broker Reciprocity (sm) program, allowing us to display other broker's listings on our website. All properties are subject to prior sale, change or withdrawal.



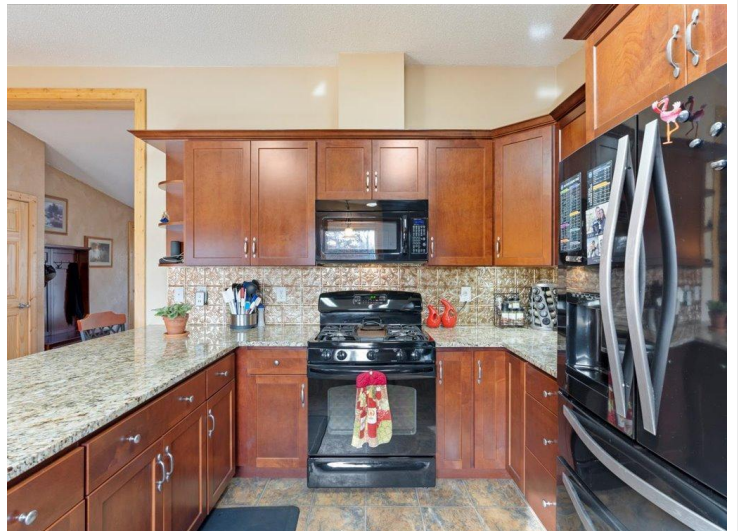
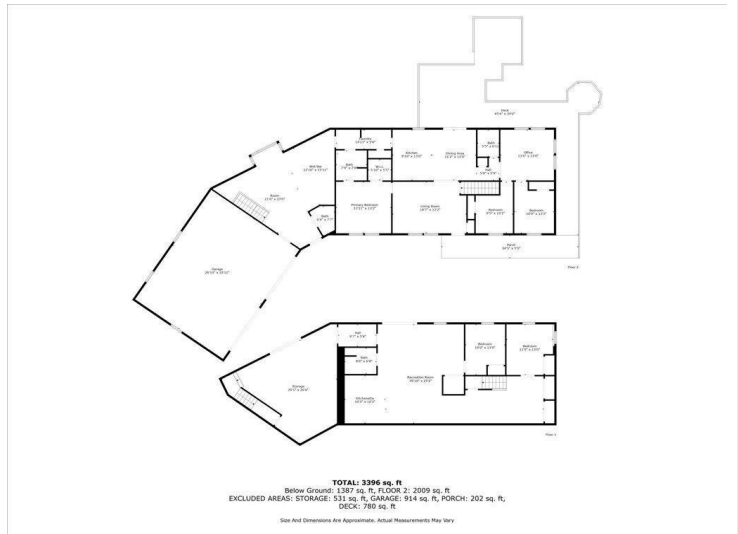
Call Affinity Real Estate

218-237-3333

info@affinityrealestate.com



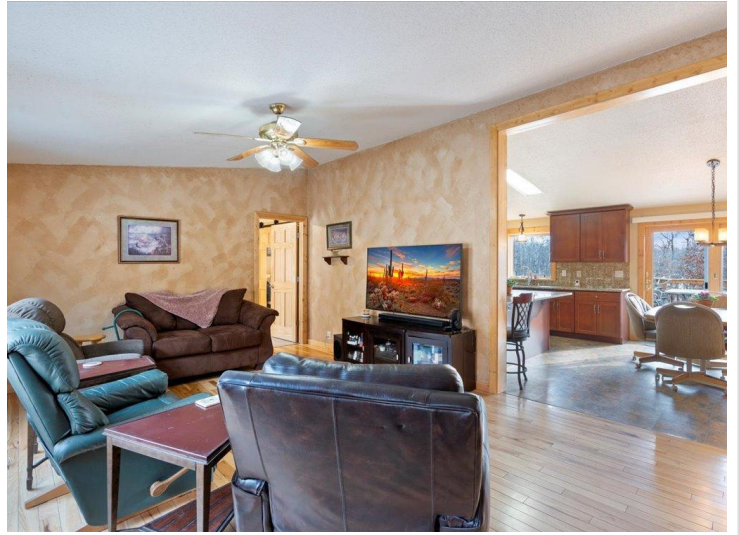
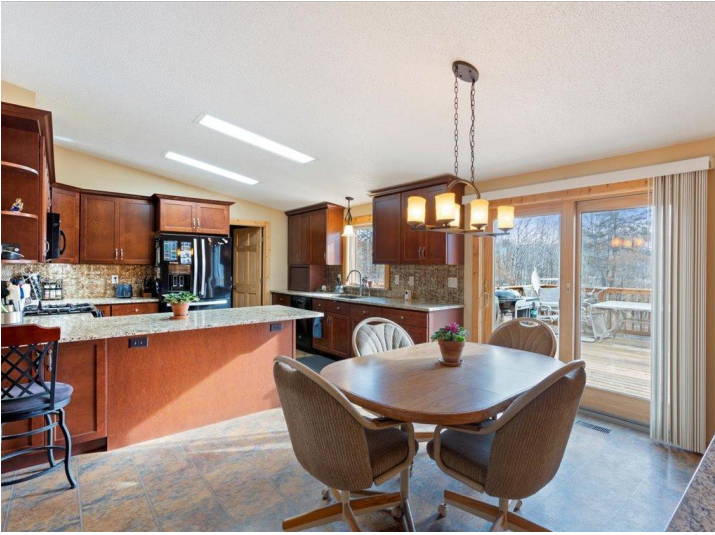
Affinity Real Estate - 600 Park Avenue South - Park Rapids MN 56470



website: www.AffinityRealEstate.com | email: info@affinityrealestate.com | office: 218-237-3333 | fax: 218-237-3377



\$449,900
 MLS 6378288 Residential
 31335 Cherokee Trail
 Breezy Point MN 56472



website: www.AffinityRealEstate.com | email: info@affinityrealestate.com | office: 218-237-3333 | fax: 218-237-3377

Affinity
REAL ESTATE INC

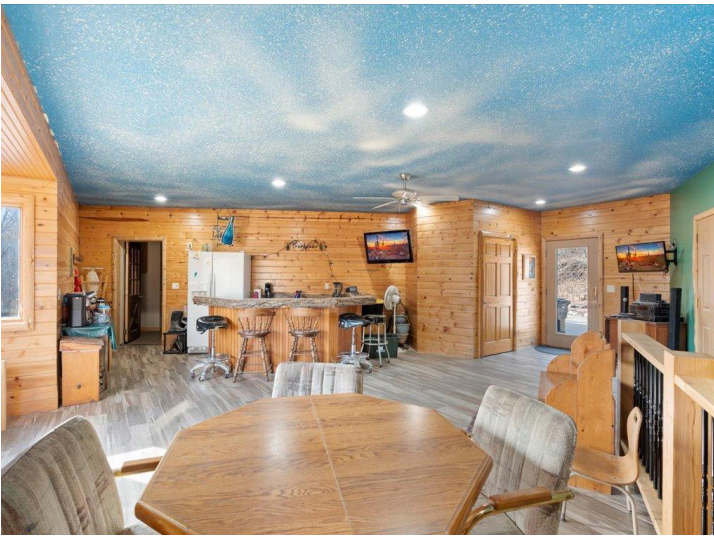
\$449,900
MLS 6378288 Residential
31335 Cherokee Trail
Breezy Point MN 56472



website: www.AffinityRealEstate.com | email: info@affinityrealestate.com | office: 218-237-3333 | fax: 218-237-3377

Affinity
REAL ESTATE INC

\$449,900
MLS 6378288 Residential
31335 Cherokee Trail
Breezy Point MN 56472



website: www.AffinityRealEstate.com | email: info@affinityrealestate.com | office: 218-237-3333 | fax: 218-237-3377

Affinity
REAL ESTATE INC

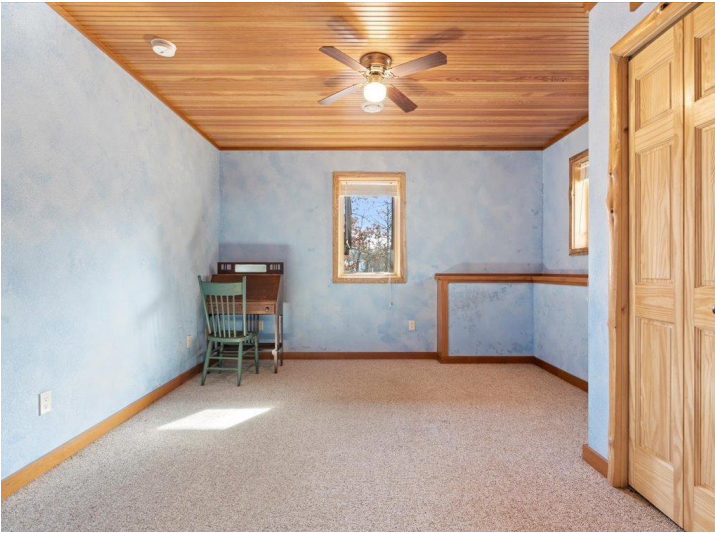
\$449,900
MLS 6378288 Residential
31335 Cherokee Trail
Breezy Point MN 56472



website: www.AffinityRealEstate.com | email: info@affinityrealestate.com | office: 218-237-3333 | fax: 218-237-3377



\$449,900
 MLS 6378288 Residential
 31335 Cherokee Trail
 Breezy Point MN 56472



website: www.AffinityRealEstate.com | email: info@affinityrealestate.com | office: 218-237-3333 | fax: 218-237-3377

Affinity
REAL ESTATE INC

\$449,900
MLS 6378288 Residential
31335 Cherokee Trail
Breezy Point MN 56472



website: www.AffinityRealEstate.com | email: info@affinityrealestate.com | office: 218-237-3333 | fax: 218-237-3377



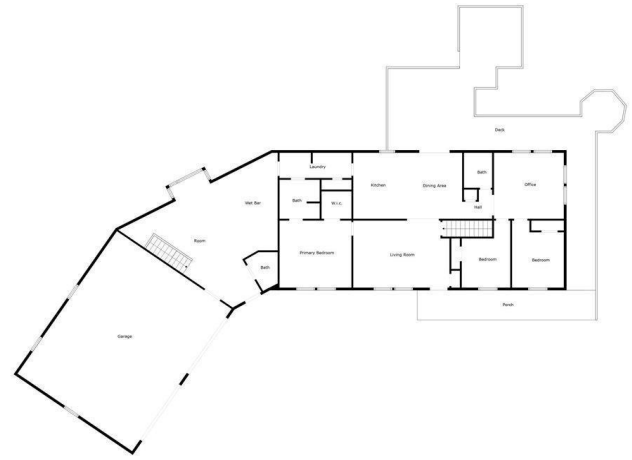
\$449,900
 MLS 6378288 Residential
 31335 Cherokee Trail
 Breezy Point MN 56472



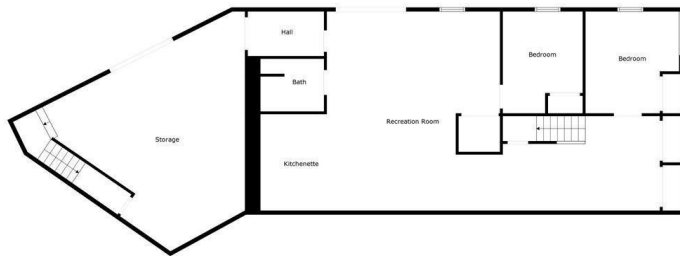
website: www.AffinityRealEstate.com | email: info@affinityrealestate.com | office: 218-237-3333 | fax: 218-237-3377

Affinity
REAL ESTATE INC

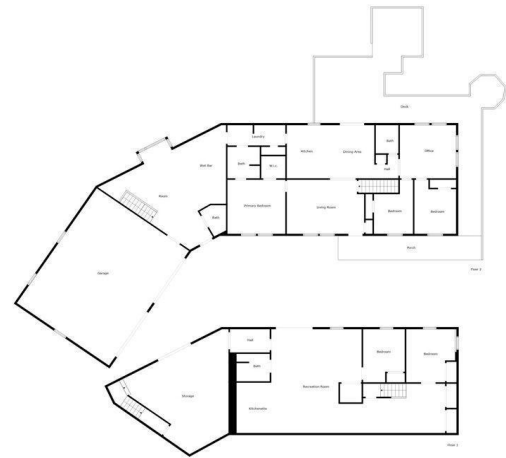
\$449,900
MLS 6378288 Residential
31335 Cherokee Trail
Breezy Point MN 56472



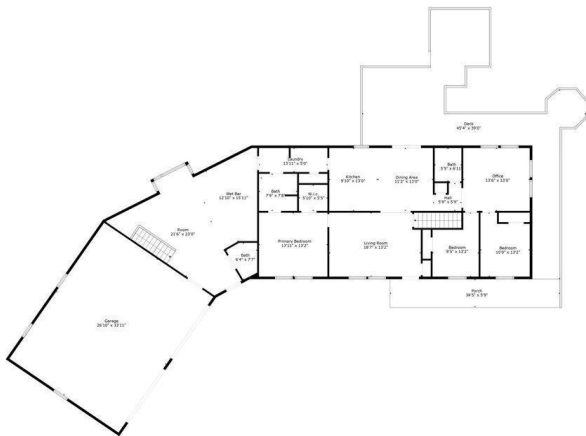
Size And Dimensions Are Approximate. Actual Measurements May Vary



Size And Dimensions Are Approximate. Actual Measurements May Vary

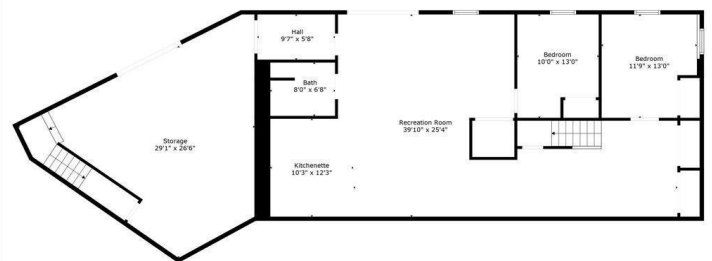


Size And Dimensions Are Approximate. Actual Measurements May Vary



TOTAL: 3396 sq. ft.
Below Ground: 1387 sq. ft. FLOOR 2: 2009 sq. ft.
EXCLUDED AREAS: STORAGE: 531 sq. ft. GARAGE: 914 sq. ft. PORCH: 202 sq. ft.
DECK: 780 sq. ft.

Size And Dimensions Are Approximate. Actual Measurements May Vary



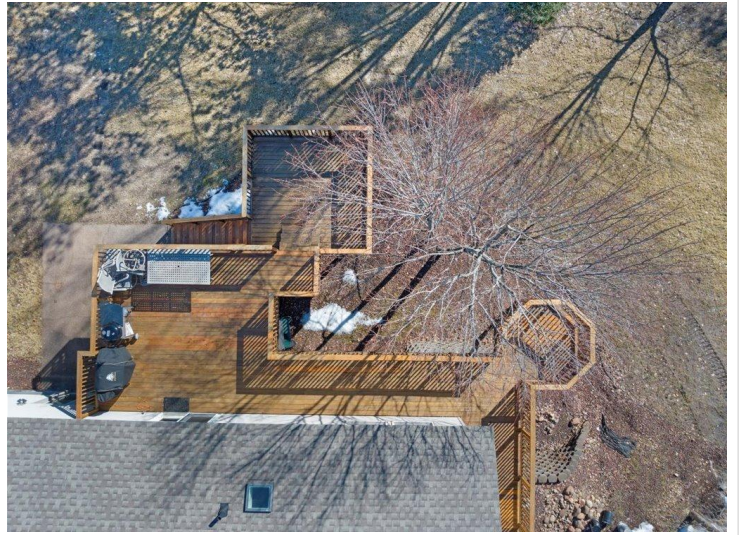
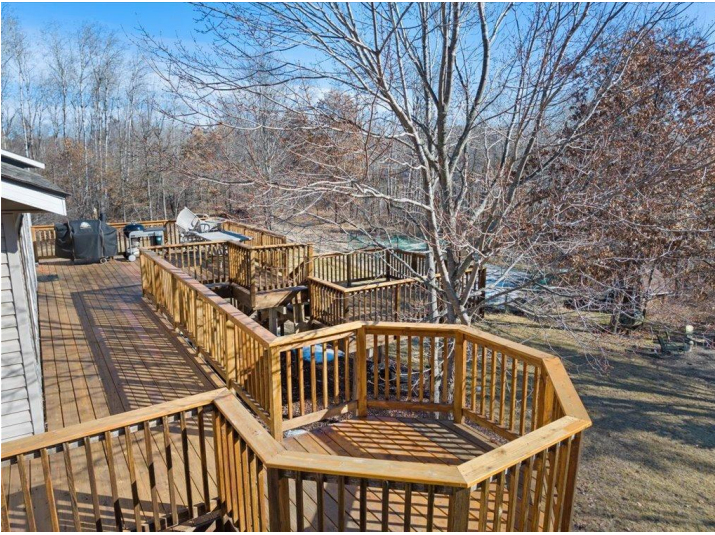
TOTAL: 3396 sq. ft.
Below Ground: 1387 sq. ft. FLOOR 2: 2009 sq. ft.
EXCLUDED AREAS: STORAGE: 531 sq. ft. GARAGE: 914 sq. ft. PORCH: 202 sq. ft.
DECK: 780 sq. ft.

Size And Dimensions Are Approximate. Actual Measurements May Vary

website: www.AffinityRealEstate.com | email: info@affinityrealestate.com | office: 218-237-3333 | fax: 218-237-3377

Affinity
REAL ESTATE INC

\$449,900
MLS 6378288 Residential
31335 Cherokee Trail
Breezy Point MN 56472



website: www.AffinityRealEstate.com | email: info@affinityrealestate.com | office: 218-237-3333 | fax: 218-237-3377



\$449,900
 MLS 6378288 Residential
 31335 Cherokee Trail
 Breezy Point MN 56472