



MLS 6380705 Land

\$59,500

0.32 Acres
Subdivided

355 Homestead Street
Detroit Lakes MN 56501

Status: Active

Description:

There are 3 buildable lots in this bundle in a well developed and growing neighborhood. These lots are located behind a church and near schools. These 3 lots TOTAL are selling for an incredible \$69,500.00 well below tax assessed value.

Additional Details:

Lot Acres	0.32
Lot Dimensions	199x74x233x55
School District	22
Taxes	\$1,134
Taxes with Assessments	\$3,460
Tax Year	2024

Additional Features:

Driving Directions:

Richwood Road North then left on Homestead St. See Signs.



Listed By:
ACTION REALTY

Affinity Real Estate Inc. participates in the Regional Multiple Listing Service of Minnesota, Inc Broker Reciprocity (sm) program, allowing us to display other broker's listings on our website. All properties are subject to prior sale, change or withdrawal.



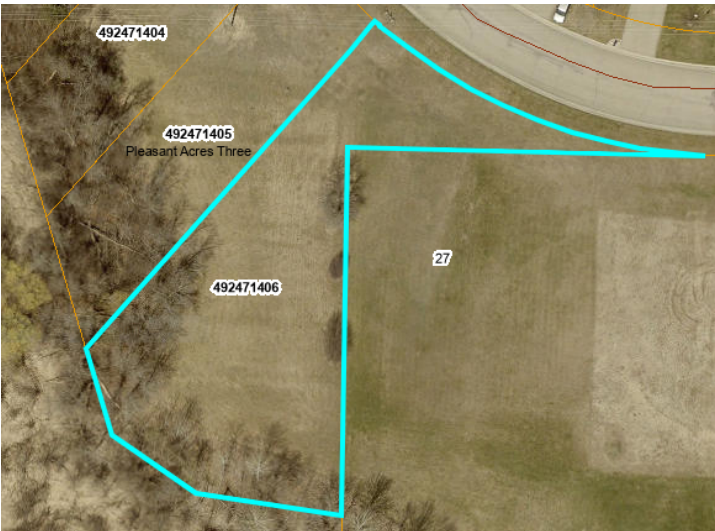
Call Affinity Real Estate

218-237-3333

info@affinityrealestate.com



Affinity Real Estate - 600 Park Avenue South - Park Rapids MN 56470



website: www.AffinityRealEstate.com | email: info@affinityrealestate.com | office: 218-237-3333 | fax: 218-237-3377



\$59,500
 MLS 6380705 Land
 355 Homestead Street
 Detroit Lakes MN 56501