



MLS 6386440 Residential

\$249,900

1,400 sq ft
3 bedrooms
2 baths

6805 Stacyrich Lane
Bemidji MN 56601

Status: Hold

Description:

MOTIVATED SELLER!!

Convenient and Easy living are the first things that come to mind with this HOME. Featuring one level, open concept living. 3 beds and 2 baths, including a master suite. Attached 2 stall garage all situated on 1.92 acres. Brand new carpet in the bedrooms and living room!!

Additional Details:

Year Built	2012
Lot Acres	1.92
Lot Dimensions	419x317x345x146
Garage Stalls	2
School District	31
Taxes	\$2,248
Taxes with Assessments	\$2,248
Tax Year	2023

Additional Features:

Basement: Other **Fuel:** Propane **Garage:** 2 **Heat:** Forced Air **Sewer:** Other **Water:** Other **Air Conditioning:** None

Driving Directions:

Follow division street west to Stone Lake Rd. Take a right. Follow Stacyrich, go right and to the address



Listed By:
RE/MAX Bemidji

Affinity Real Estate Inc. participates in the Regional Multiple Listing Service of Minnesota, Inc Broker Reciprocity (sm) program, allowing us to display other broker's listings on our website. All properties are subject to prior sale, change or withdrawal.



Call Affinity Real Estate

218-237-3333

info@affinityrealestate.com



Affinity Real Estate - 600 Park Avenue South - Park Rapids MN 56470



website: www.AffinityRealEstate.com | email: info@affinityrealestate.com | office: 218-237-3333 | fax: 218-237-3377



\$249,900
MLS 6386440 Residential
6805 Stacyrich Lane
Bemidji MN 56601



website: www.AffinityRealEstate.com | email: info@affinityrealestate.com | office: 218-237-3333 | fax: 218-237-3377



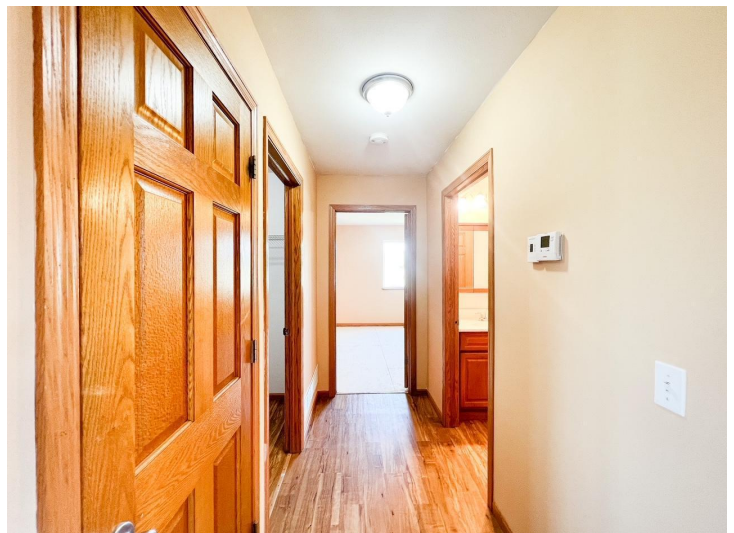
\$249,900
 MLS 6386440 Residential
 6805 Stacyrich Lane
 Bemidji MN 56601



website: www.AffinityRealEstate.com | email: info@affinityrealestate.com | office: 218-237-3333 | fax: 218-237-3377



\$249,900
 MLS 6386440 Residential
 6805 Stacyrich Lane
 Bemidji MN 56601



website: www.AffinityRealEstate.com | email: info@affinityrealestate.com | office: 218-237-3333 | fax: 218-237-3377



\$249,900
MLS 6386440 Residential
6805 Stacyrich Lane
Bemidji MN 56601



website: www.AffinityRealEstate.com | email: info@affinityrealestate.com | office: 218-237-3333 | fax: 218-237-3377



\$249,900
MLS 6386440 Residential
6805 Stacyrich Lane
Bemidji MN 56601



website: www.AffinityRealEstate.com | email: info@affinityrealestate.com | office: 218-237-3333 | fax: 218-237-3377

Affinity
REAL ESTATE INC

\$249,900
MLS 6386440 Residential
6805 Stacyrich Lane
Bemidji MN 56601