



MLS 6386616 Lake Home

\$129,900

480 sq ft
0 bedrooms
1 baths

38867 Arrowhead Drive
Pine River MN 56474

Waterfront: Arrowhead

Status: Closed

Description:

This adorable little cabin sits on 1.64 acres on an end-of-road lot in the heart of the Lake Country! Surrounded by trees for privacy, there's plenty of room to spread out in this huge yard. Enjoy storage for your toys with a two stall garage and sheds. The cabin is heated, and insulated, and has been used year-round. Make more space for sleeping by finishing the full basement, or just utilize the additional storage space. This is the perfect "up north" get-a-way in close proximity to the cities of Crosslake, Pine River, and Emily, and public hunting, snowmobile, bicycle, and ATV trails, and hunting opportunities. Not to mention public access for fishing as well as your own deeded access to Arrowhead lake on the Whitefish Chain.

Additional Details:

Year Built	1975
Lot Acres	1.64
Lot Dimensions	156x965x130x508
Garage Stalls	2
School District	2174
Taxes	\$416
Taxes with Assessments	\$416
Tax Year	2022

Additional Features:

Basement: Block, Full **Fuel:** Propane **Garage:** 2 **Heat:** Forced Air, Radiant **Sewer:** Private Sewer **Water:** Drilled, Well **Air Conditioning:** Wall Unit(s)

Driving Directions:

From Pine River, go East on Cty Rd 1, then right on W Arrowhead Dr, follow to end of road. Lake access is just across from cabin



Listed By:
North Pointe Realty Advantage

Affinity Real Estate Inc. participates in the Regional Multiple Listing Service of Minnesota, Inc Broker Reciprocity (sm) program, allowing us to display other broker's listings on our website. All properties are subject to prior sale, change or withdrawal.



Call Affinity Real Estate

218-237-3333

info@affinityrealestate.com



Affinity Real Estate - 600 Park Avenue South - Park Rapids MN 56470



website: www.AffinityRealEstate.com | email: info@affinityrealestate.com | office: 218-237-3333 | fax: 218-237-3377

Affinity
REAL ESTATE INC

\$129,900
MLS 6386616 Lake Home
38867 Arrowhead Drive
Pine River MN 56474



website: www.AffinityRealEstate.com | email: info@affinityrealestate.com | office: 218-237-3333 | fax: 218-237-3377

Affinity
REAL ESTATE INC

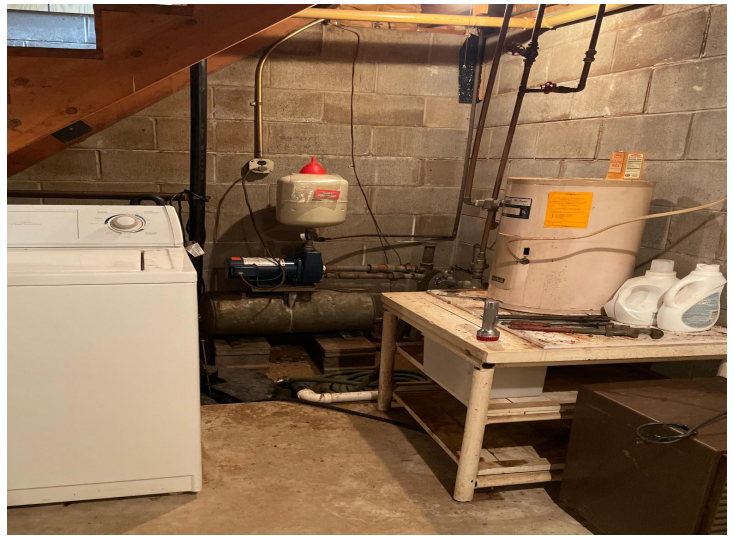
\$129,900
MLS 6386616 Lake Home
38867 Arrowhead Drive
Pine River MN 56474



website: www.AffinityRealEstate.com | email: info@affinityrealestate.com | office: 218-237-3333 | fax: 218-237-3377

Affinity
REAL ESTATE INC

\$129,900
MLS 6386616 Lake Home
38867 Arrowhead Drive
Pine River MN 56474



website: www.AffinityRealEstate.com | email: info@affinityrealestate.com | office: 218-237-3333 | fax: 218-237-3377



\$129,900
 MLS 6386616 Lake Home
 38867 Arrowhead Drive
 Pine River MN 56474



website: www.AffinityRealEstate.com | email: info@affinityrealestate.com | office: 218-237-3333 | fax: 218-237-3377



\$129,900
 MLS 6386616 Lake Home
 38867 Arrowhead Drive
 Pine River MN 56474



website: www.AffinityRealEstate.com | email: info@affinityrealestate.com | office: 218-237-3333 | fax: 218-237-3377



\$129,900
 MLS 6386616 Lake Home
 38867 Arrowhead Drive
 Pine River MN 56474