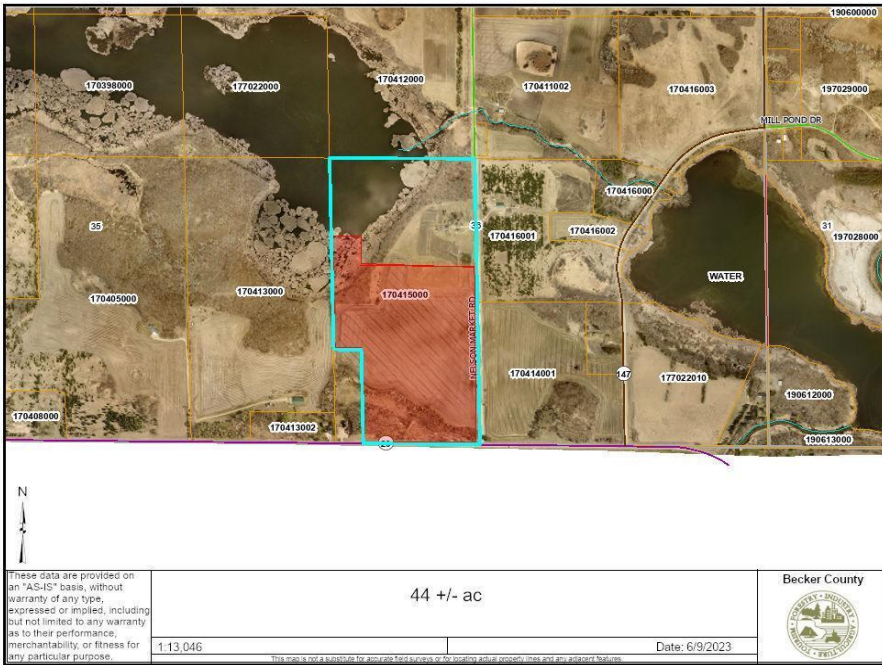




MLS 6386825 Lake Land

\$528,000



Description:

Land! Acreage! Located in the Pelican Lake and Lake Melissa area! 44 +/- acres located just NE of Pelican Lake on County Road 20 and Nelson Lake Road. Easily accessible! There's everything you need on this land from tillable acres, trees, hunting and access to water. Great horse property! There are several great locations to build including a beautiful spot right on the hill with breath taking views! Privacy with location! This is a split from parcel 170415000.

Additional Details:

| | |
|------------------------|-----------|
| Lot Acres | 44 |
| Lot Dimensions | Irregular |
| School District | 548 |
| Taxes | \$1,126 |
| Taxes with Assessments | \$1,126 |
| Tax Year | 2022 |

Additional Features:

Driving Directions:

From DL take Hwy 59 to West on County Road 20 to Nelson Lake Rd. On West side of Nelson Lake Road.



Listed By:
Counselor Realty of Detroit Lakes

Affinity Real Estate Inc. participates in the Regional Multiple Listing Service of Minnesota, Inc Broker Reciprocity (sm) program, allowing us to display other broker's listings on our website. All properties are subject to prior sale, change or withdrawal.



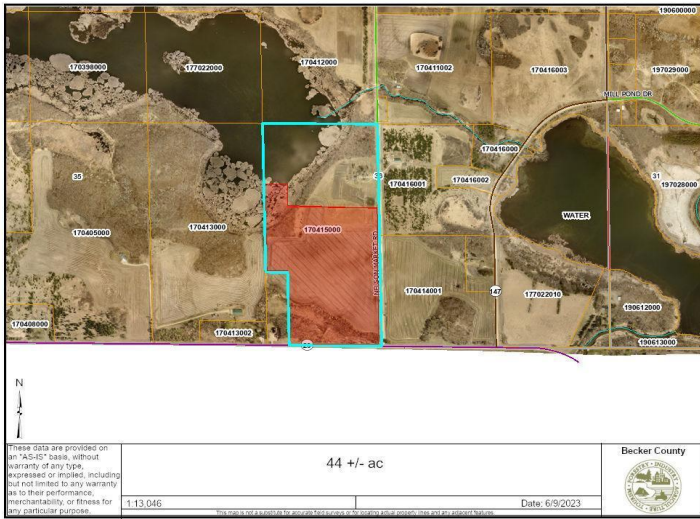
Call Affinity Real Estate

218-237-3333

info@affinityrealestate.com



Affinity Real Estate - 600 Park Avenue South - Park Rapids MN 56470



website: www.AffinityRealEstate.com | email: info@affinityrealestate.com | office: 218-237-3333 | fax: 218-237-3377

Affinity
REAL ESTATE INC

\$528,000
MLS 6386825 Lake Land
TBD Nelson Market Road
Detroit Lakes MN 56501



website: www.AffinityRealEstate.com | email: info@affinityrealestate.com | office: 218-237-3333 | fax: 218-237-3377



\$528,000

MLS 6386825 Lake Land
TBD Nelson Market Road
Detroit Lakes MN 56501