



MLS 6390002 Lake Land

\$56,000

Description:

Escape to Walker Lake Preserve! Enjoy a total of 3,400 feet of common lake access on Walker Lake and also have access to Otter Tail Lake! Own your own piece of paradise and purchase a lot that is equipped and ready for your RV! Seasonal sites include septic, water and electricity. Walker Lake Preserve has a large beach, a shared pavilion, picnic and play areas. Unit 16B is 1/2 acre lot and has a nice open yard accented by trees. Enjoy the walking trails and the abundance of wildlife!

Additional Details:

Lot Acres	0.5
Lot Dimensions	100x200
School District	542
Taxes	\$452
Taxes with Assessments	\$608
Tax Year	2023

Additional Features:

Driving Directions:

Go West from Hwy #78 and Cty Highway #1 intersection in Ottertail. Turn right on Cty Hwy #14. Follow to Walker Lake Preserve. Look at Map of the development to find correct lots.



Listed By:
Trilogy Real Estate

Affinity Real Estate Inc. participates in the Regional Multiple Listing Service of Minnesota, Inc Broker Reciprocity (sm) program, allowing us to display other broker's listings on our website. All properties are subject to prior sale, change or withdrawal.



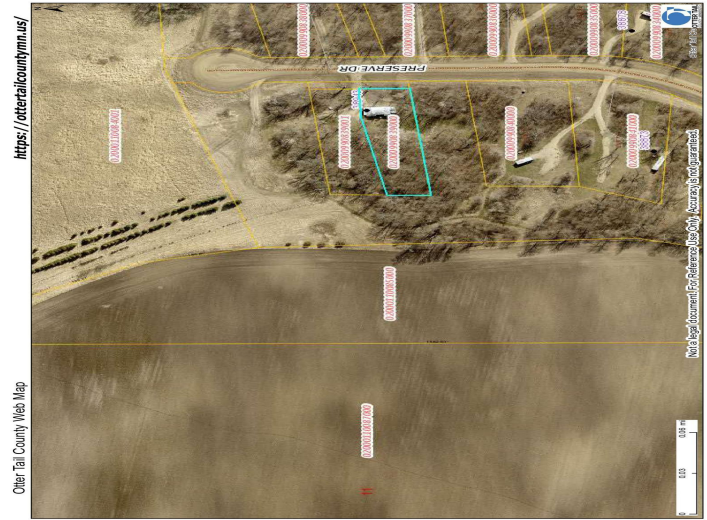
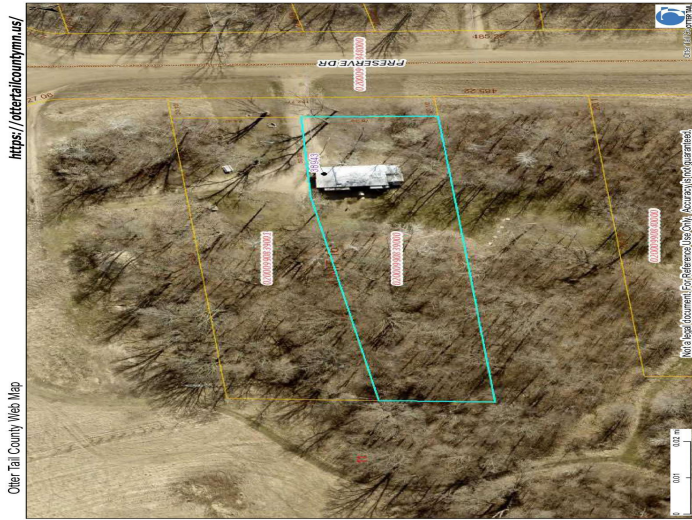
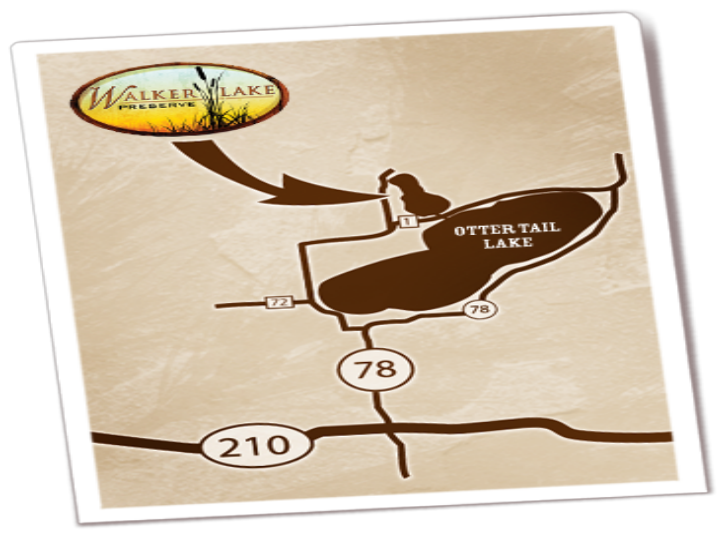
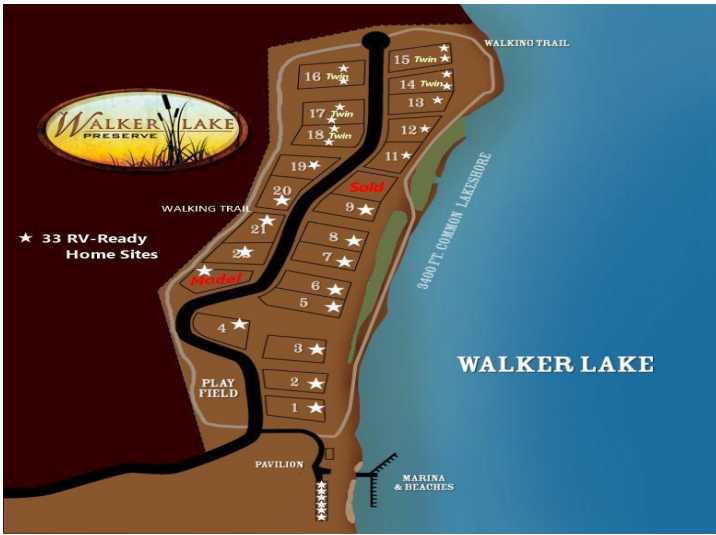
Call Affinity Real Estate

218-237-3333

info@affinityrealestate.com



Affinity Real Estate - 600 Park Avenue South - Park Rapids MN 56470



website: www.AffinityRealEstate.com | email: info@affinityrealestate.com | office: 218-237-3333 | fax: 218-237-3377

Affinity
REAL ESTATE INC

\$56,000
MLS 6390002 Lake Land
38943 Preserve Drive
Richville MN 56576



website: www.AffinityRealEstate.com | email: info@affinityrealestate.com | office: 218-237-3333 | fax: 218-237-3377



\$56,000

MLS 6390002 Lake Land
38943 Preserve Drive
Richville MN 56576