



MLS 6390806 Commercial Sale

\$2,800



Description:

3200sf of single tenant building for lease located just North of Sanford Medical campus. Currently zoned B-2, property is open to a number of different uses. Easy build out as the space is more or less wide open with 12' sidewalls and a 12'W x 11'H overhead door at South end of building. Private well and septic serve the property. Lease rate based on 3 year minimum lease.

Additional Details:

Year Built	1996
Lot Acres	1.03
Lot Dimensions	150x452
Garage Stalls	1
School District	31
Taxes	\$3,194
Taxes with Assessments	\$3,194
Tax Year	2023

Additional Features:

Fuel: Natural Gas **Garage:** 1 **Heat:** Forced Air **Sewer:** Septic System Compliant - Yes **Water:** Submersible - 4 Inch

Driving Directions:

From Hwy 71/Hwy 2 (Walmart), North on 71, Right on Anne Street roundabout, Left on Minnkota, Right on Pine Street to property on Right.



Listed By:
Lake-N-Woods Realty, Inc.

Affinity Real Estate Inc. participates in the Regional Multiple Listing Service of Minnesota, Inc Broker Reciprocity (sm) program, allowing us to display other broker's listings on our website. All properties are subject to prior sale, change or withdrawal.



Call Affinity Real Estate

218-237-3333

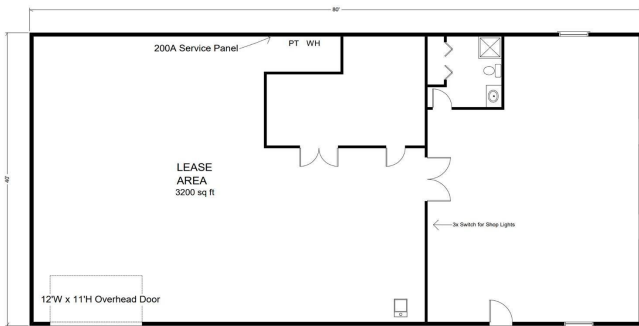
info@affinityrealestate.com



Affinity Real Estate - 600 Park Avenue South - Park Rapids MN 56470



1606 Pine Street NW



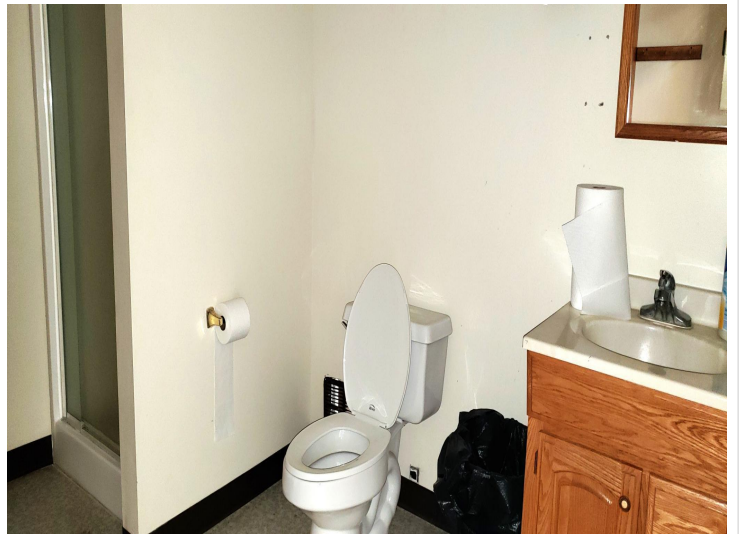
*All measurements approximate. Tenant and/or Tenant Representative to verify.



website: www.AffinityRealEstate.com | email: info@affinityrealestate.com | office: 218-237-3333 | fax:218-237-3377



\$2,800
MLS 6390806 Commercial
Sale
1606 Pine Street
Bemidji MN 56601



website: www.AffinityRealEstate.com | email: info@affinityrealestate.com | office: 218-237-3333 | fax:218-237-3377

Affinity
REAL ESTATE INC

\$2,800
MLS 6390806 Commercial
Sale
1606 Pine Street
Bemidji MN 56601