



MLS 6393219 Land

\$20,500

1.06 Acres
Raw Land

Tbd** Golf View Drive
Pine River MN 56474

Status: Active

Description:

ALDER ASH ADDITION LOT 2-THIS PRIME 1.06 ACRE PARCEL HAS EXCELLENT DEVELOPMENT POTENTIAL FOR SINGLE FAMILY OR TOWNHOME SITES. ELECTRIC/PHONE ARE AVAILABLE WITH GOOD BLACKTOP ACCESS AND CLOSE PROXIMITY TO CITY AMENITIES.

Additional Details:

| | |
|------------------------|--------------------|
| Lot Acres | 1.06 |
| Lot Dimensions | 71x126x280x173x217 |
| School District | 2174 |
| Taxes | \$1 |
| Taxes with Assessments | \$1 |
| Tax Year | 2023 |

Additional Features:

Driving Directions:

1 MILE W. OF 371 ON CR #2 (24TH ST. SW) TO 28TH AVE. SW THEN RIGHT ON 28TH STRAIGHT AHEAD TO PROPERTY.



Listed By:
Heartland Real Estate

Affinity Real Estate Inc. participates in the Regional Multiple Listing Service of Minnesota, Inc Broker Reciprocity (sm) program, allowing us to display other broker's listings on our website. All properties are subject to prior sale, change or withdrawal.



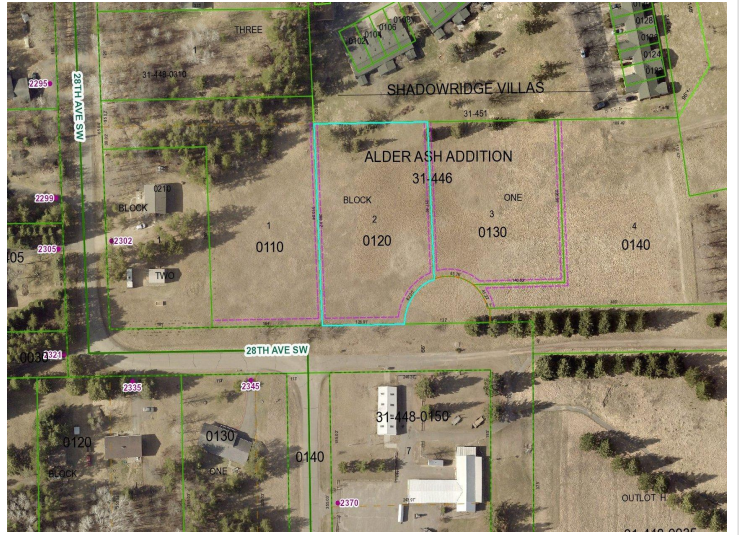
Call Affinity Real Estate

218-237-3333

info@affinityrealestate.com



Affinity Real Estate - 600 Park Avenue South - Park Rapids MN 56470



website: www.AffinityRealEstate.com | email: info@affinityrealestate.com | office: 218-237-3333 | fax:218-237-3377



\$20,500
MLS 6393219 Land
Tbd** Golf View Drive
Pine River MN 56474