



MLS 6393317 Lake Land

**\$495,000**

**Description:**

Welcome to Rock Lake's hidden gem! Nestled on the western shore of Rock Lake, this property boasts 15 wooded acres of natural beauty and tranquility. With its 1,440' of shoreline, this parcel offers a serene and private escape for nature enthusiasts and outdoor lovers. The property features level areas with old cabins, one that could possibly be renovated, and spots for potential new homes or cabins. Imagine the possibilities of creating your own retreat amidst the enchanting woods, where you can unwind and connect with nature. One of the remarkable highlights of this property is that it is adjacent to the Rock Lake Aquatic Management Area (AMA). This 24-acre conservation area, with 2,300' of shoreline, ensures an uninterrupted connection to nature. Conveniently located, this property is 12 miles from downtown Detroit Lakes and 7 miles from the renowned 43,000-acre Tamarac National Wildlife Refuge. Rock Lake has a variety of panfish and walleye stocked every 2-4 years.

**Additional Details:**

Lot Acres	15
Lot Dimensions	1440x220x1322x330
School District	22
Taxes	\$3,099
Taxes with Assessments	\$3,270
Tax Year	2023

**Additional Features:**

**Driving Directions:**

From Detroit Lakes, go east on MN State Hwy 34, turn north onto Becker Cty Hwy 25, at the stop sign at Hwys 25 & 32, continue north where it turns into Broadway Ave and follow to the property that will be on the right. Callaway Fire #s H152 and H152A.



Listed By:  
Counselor Realty of Detroit Lakes

Affinity Real Estate Inc. participates in the Regional Multiple Listing Service of Minnesota, Inc Broker Reciprocity (sm) program, allowing us to display other broker's listings on our website. All properties are subject to prior sale, change or withdrawal.



**Call Affinity Real Estate**

**218-237-3333**

**info@affinityrealestate.com**



**Affinity Real Estate - 600 Park Avenue South - Park Rapids MN 56470**





website: [www.AffinityRealEstate.com](http://www.AffinityRealEstate.com) | email: [info@affinityrealestate.com](mailto:info@affinityrealestate.com) | office: 218-237-3333 | fax: 218-237-3377



**\$495,000**

MLS 6393317 Lake Land  
25147 Broadway Avenue  
Detroit Lakes MN 56501





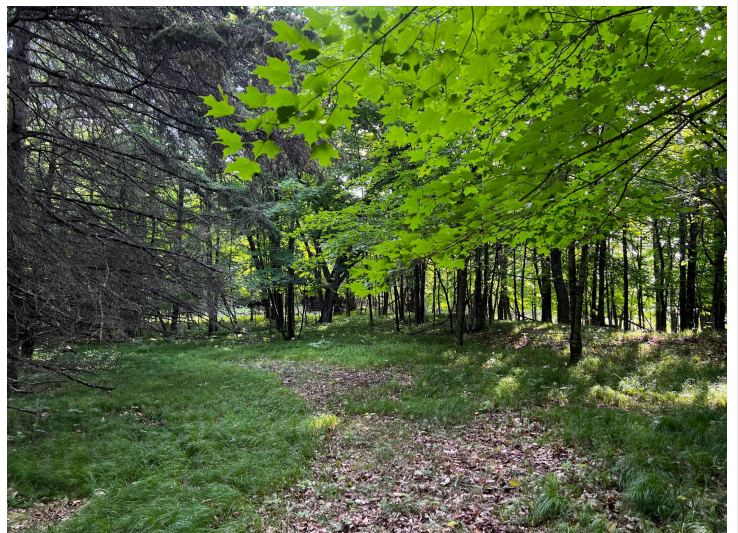
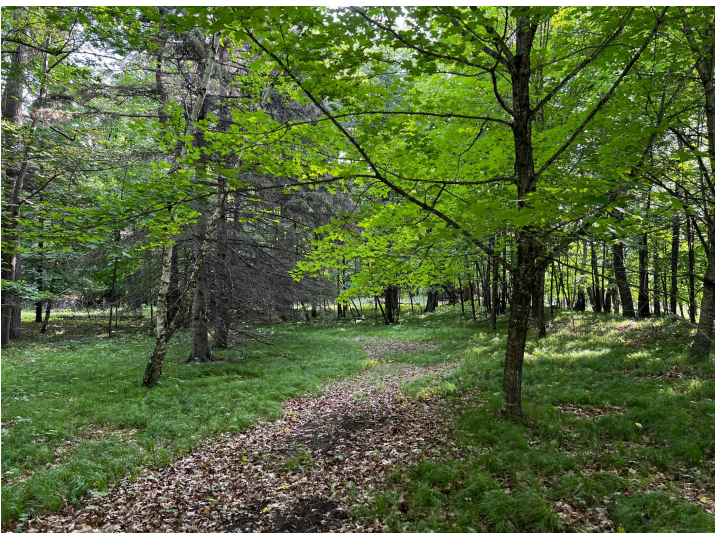
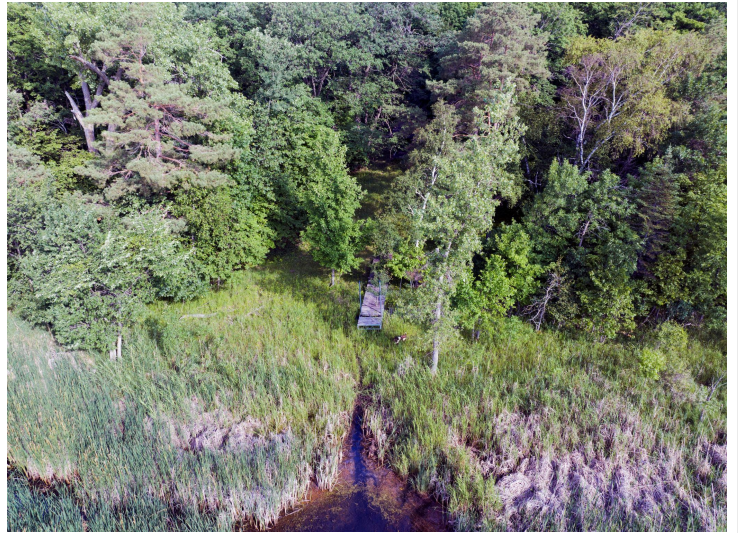
website: [www.AffinityRealEstate.com](http://www.AffinityRealEstate.com) | email: [info@affinityrealestate.com](mailto:info@affinityrealestate.com) | office: 218-237-3333 | fax: 218-237-3377



**\$495,000**

MLS 6393317 Lake Land  
25147 Broadway Avenue  
Detroit Lakes MN 56501





website: [www.AffinityRealEstate.com](http://www.AffinityRealEstate.com) | email: [info@affinityrealestate.com](mailto:info@affinityrealestate.com) | office: 218-237-3333 | fax: 218-237-3377



**\$495,000**  
MLS 6393317 Lake Land  
25147 Broadway Avenue  
Detroit Lakes MN 56501





website: [www.AffinityRealEstate.com](http://www.AffinityRealEstate.com) | email: [info@affinityrealestate.com](mailto:info@affinityrealestate.com) | office: 218-237-3333 | fax: 218-237-3377



**\$495,000**

MLS 6393317 Lake Land  
25147 Broadway Avenue  
Detroit Lakes MN 56501





website: [www.AffinityRealEstate.com](http://www.AffinityRealEstate.com) | email: [info@affinityrealestate.com](mailto:info@affinityrealestate.com) | office: 218-237-3333 | fax: 218-237-3377



**\$495,000**

MLS 6393317 Lake Land  
25147 Broadway Avenue  
Detroit Lakes MN 56501