



MLS 6393330 Residential

\$584,900

2,280 sq ft
3 bedrooms
2 baths

18508 Wilderness Drive
Staples MN 56479

Status: Canceled

Description:

80 Acres!! Don't miss out on this incredible opportunity to make this your home or recreational paradise!! This property features 80 acres to hunt (14 acres are pasture for livestock), trails to explore or just enjoy the peace and quiet. This property also features a large 12x42 covered porch, 3 well built permanent deer stands, chicken coop and garden space!! Inside this property features 3BR/2BA with an open concept main floor, main level features a primary bedroom, large kitchen space with ample cabinet space, large living and dining room spaces, eye catching live edge staircase, full bath, main level laundry and a wood burning stove. Upper level features 2 BR, full bath and family room space has been plumbed for a 2nd kitchen space!! Heated/insulated garage space divided into two separate spaces which features 24x42 space with 11' tall door and 2nd space 12x32 with a 7' tall door. Located just 15 minutes from Staples on paved road. Option to purchase with 20 acres for \$499,900. see MLS # 6425883.

Additional Details:

Year Built	2020
Lot Acres	80
Lot Dimensions	1320x2640
Garage Stalls	8
School District	2170
Taxes	\$3,493
Taxes with Assessments	\$3,630
Tax Year	2023

Additional Features:

Fuel: Propane, Wood **Heat:** Forced Air

Driving Directions:

From Staples take Airport Road North to a Right onto County Road 30 to a Left onto County Road 7 to a Left onto Wilderness Drive and Follow to the property located on the Left at 18508 Wilderness Drive



Listed By:
Edina Realty, Inc.

Affinity Real Estate Inc. participates in the Regional Multiple Listing Service of Minnesota, Inc Broker Reciprocity (sm) program, allowing us to display other broker's listings on our website. All properties are subject to prior sale, change or withdrawal.



Call Affinity Real Estate

218-237-3333

info@affinityrealestate.com



Affinity Real Estate - 600 Park Avenue South - Park Rapids MN 56470



website: www.AffinityRealEstate.com | email: info@affinityrealestate.com | office: 218-237-3333 | fax: 218-237-3377

Affinity
REAL ESTATE INC

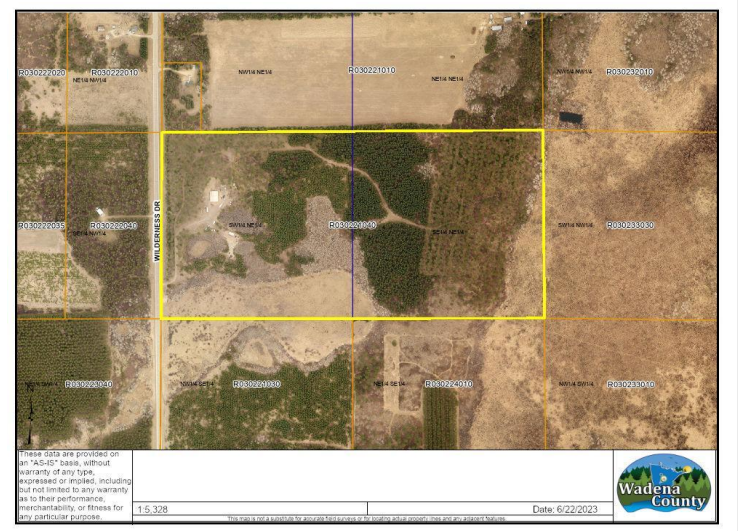
\$584,900
MLS 6393330 Residential
18508 Wilderness Drive
Staples MN 56479



website: www.AffinityRealEstate.com | email: info@affinityrealestate.com | office: 218-237-3333 | fax: 218-237-3377



\$584,900
 MLS 6393330 Residential
 18508 Wilderness Drive
 Staples MN 56479



website: www.AffinityRealEstate.com | email: info@affinityrealestate.com | office: 218-237-3333 | fax: 218-237-3377

Affinity
REAL ESTATE INC

\$584,900
MLS 6393330 Residential
18508 Wilderness Drive
Staples MN 56479



website: www.AffinityRealEstate.com | email: info@affinityrealestate.com | office: 218-237-3333 | fax: 218-237-3377

Affinity
REAL ESTATE INC

\$584,900
MLS 6393330 Residential
18508 Wilderness Drive
Staples MN 56479



website: www.AffinityRealEstate.com | email: info@affinityrealestate.com | office: 218-237-3333 | fax: 218-237-3377



\$584,900
 MLS 6393330 Residential
 18508 Wilderness Drive
 Staples MN 56479



website: www.AffinityRealEstate.com | email: info@affinityrealestate.com | office: 218-237-3333 | fax: 218-237-3377



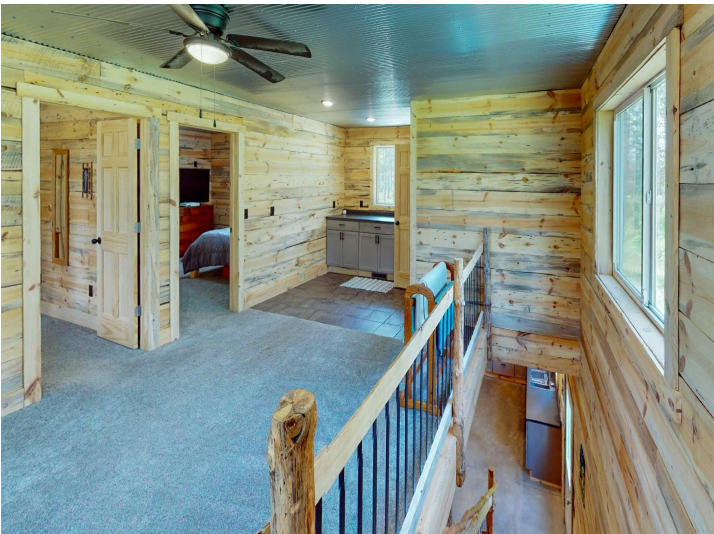
\$584,900
MLS 6393330 Residential
18508 Wilderness Drive
Staples MN 56479



website: www.AffinityRealEstate.com | email: info@affinityrealestate.com | office: 218-237-3333 | fax: 218-237-3377



\$584,900
 MLS 6393330 Residential
 18508 Wilderness Drive
 Staples MN 56479



website: www.AffinityRealEstate.com | email: info@affinityrealestate.com | office: 218-237-3333 | fax: 218-237-3377

Affinity
REAL ESTATE INC

\$584,900
MLS 6393330 Residential
18508 Wilderness Drive
Staples MN 56479



website: www.AffinityRealEstate.com | email: info@affinityrealestate.com | office: 218-237-3333 | fax: 218-237-3377



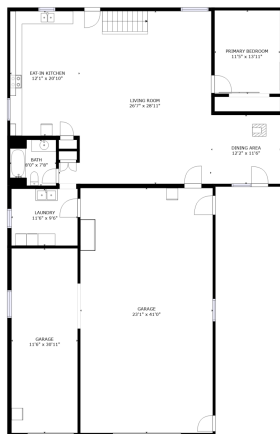
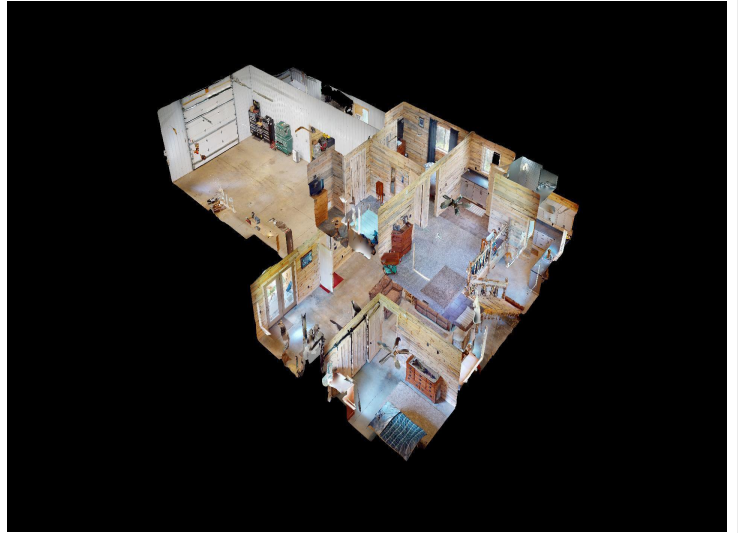
\$584,900
 MLS 6393330 Residential
 18508 Wilderness Drive
 Staples MN 56479



website: www.AffinityRealEstate.com | email: info@affinityrealestate.com | office: 218-237-3333 | fax: 218-237-3377

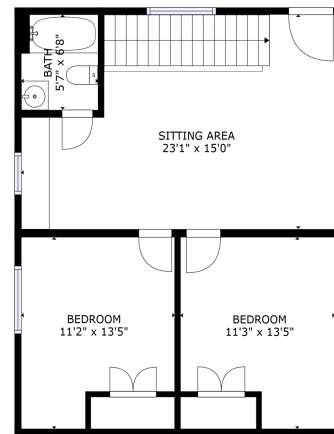
Affinity
REAL ESTATE INC

\$584,900
MLS 6393330 Residential
18508 Wilderness Drive
Staples MN 56479



GROSS INTERNAL AREA
 FLOOR 1: 1485 sq. ft. FLOOR 2: 687 sq. ft.
 EXCLUDED AREAS: GARAGE: 1301 sq. ft.
 TOTAL: 2132 sq. ft.
 SIZES AND DIMENSIONS ARE APPROXIMATE. ACTUAL MAY VARY.

FLOOR 1



GROSS INTERNAL AREA
 FLOOR 1: 1485 sq. ft. FLOOR 2: 687 sq. ft.
 EXCLUDED AREAS: GARAGE: 1301 sq. ft.
 TOTAL: 2132 sq. ft.
 SIZES AND DIMENSIONS ARE APPROXIMATE. ACTUAL MAY VARY.

FLOOR 2



website: www.AffinityRealEstate.com | email: info@affinityrealestate.com | office: 218-237-3333 | fax: 218-237-3377

Affinity
 REAL ESTATE INC

\$584,900
 MLS 6393330 Residential
 18508 Wilderness Drive
 Staples MN 56479