



MLS 6394975 Lake Home

\$1,715,000

4,318 sq ft
6 bedrooms
3 baths

23760 County 80
Nevis MN 56467

Waterfront: Belle Taine

Status: Hold

Description:

Potential to subdivide parcels. Embrace the allure of highly desirable lakeside living at this extraordinary estate situated on the coveted shores of Lake Belle Taine. Offering an impressive 350 feet of prime shoreline, this impeccably crafted 4300 square foot fieldstone home exudes an undeniable air of exclusivity and luxury. Boasting 5 bedrooms, exquisite hardwood floors, soaring vaulted ceilings, and a charming bonus bunk room, every aspect of this residence has been carefully designed to create an ambiance of refined opulence. The property further impresses with its captivating log guest house, convenient attached 3-car garage, and a full unfinished basement that holds boundless potential for customization. Set amidst the pristine beauty of one of northern Minnesota's most sought-after lakes, this secluded retreat provides an idyllic oasis of serenity and natural splendor. Surrender to breathtaking views, and appreciate the flawless craftsmanship. Sleeps 14.

Additional Details:

Year Built	1946
Lot Acres	4.27
Lot Dimensions	irregular
Garage Stalls	3
School District	308
Taxes	\$10,752
Taxes with Assessments	\$10,752
Tax Year	2023

Additional Features:

Basement: Block, Egress Window(s), Full, Concrete, Storage Space, Unfinished **Fuel:** Propane **Garage:** 3 **Heat:** Forced Air **Sewer:** Private Sewer, Septic System Compliant - Yes **Water:** Well **Air Conditioning:** Central Air

Driving Directions:

Take MN 34 East towards Nevis. Turn left on Esquire Dr. then take a quick right on to County 80. Property will be on the South side of the road.



Listed By:
RE/MAX Advantage Plus

Affinity Real Estate Inc. participates in the Regional Multiple Listing Service of Minnesota, Inc Broker Reciprocity (sm) program, allowing us to display other broker's listings on our website. All properties are subject to prior sale, change or withdrawal.



Call Affinity Real Estate

218-237-3333

info@affinityrealestate.com



Affinity Real Estate - 600 Park Avenue South - Park Rapids MN 56470



website: www.AffinityRealEstate.com | email: info@affinityrealestate.com | office: 218-237-3333 | fax:218-237-3377



\$1,715,000
MLS 6394975 Lake Home
23760 County 80
Nevis MN 56467



website: www.AffinityRealEstate.com | email: info@affinityrealestate.com | office: 218-237-3333 | fax:218-237-3377

Affinity
REAL ESTATE INC

\$1,715,000
MLS 6394975 Lake Home
23760 County 80
Nevis MN 56467



website: www.AffinityRealEstate.com | email: info@affinityrealestate.com | office: 218-237-3333 | fax:218-237-3377

Affinity
REAL ESTATE INC

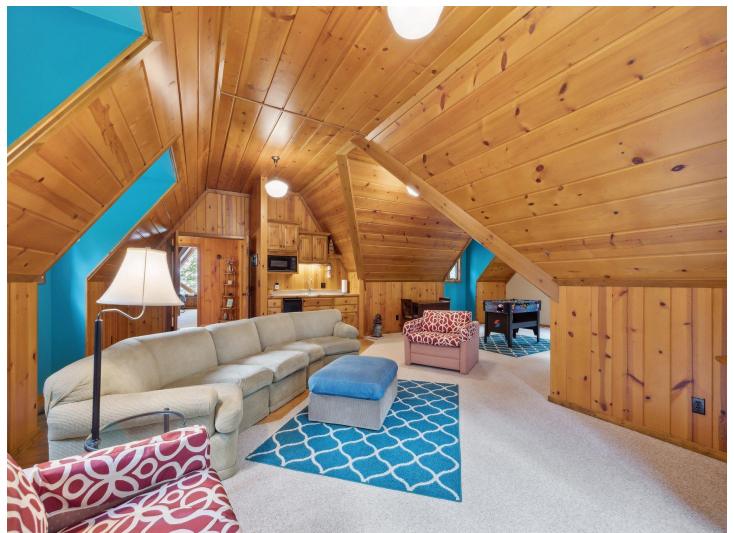
\$1,715,000
MLS 6394975 Lake Home
23760 County 80
Nevis MN 56467



website: www.AffinityRealEstate.com | email: info@affinityrealestate.com | office: 218-237-3333 | fax: 218-237-3377

Affinity
REAL ESTATE INC

\$1,715,000
MLS 6394975 Lake Home
23760 County 80
Nevis MN 56467



website: www.AffinityRealEstate.com | email: info@affinityrealestate.com | office: 218-237-3333 | fax:218-237-3377

Affinity
REAL ESTATE INC

\$1,715,000
MLS 6394975 Lake Home
23760 County 80
Nevis MN 56467



website: www.AffinityRealEstate.com | email: info@affinityrealestate.com | office: 218-237-3333 | fax:218-237-3377

Affinity
REAL ESTATE INC

\$1,715,000
MLS 6394975 Lake Home
23760 County 80
Nevis MN 56467



website: www.AffinityRealEstate.com | email: info@affinityrealestate.com | office: 218-237-3333 | fax:218-237-3377



\$1,715,000
MLS 6394975 Lake Home
23760 County 80
Nevis MN 56467



website: www.AffinityRealEstate.com | email: info@affinityrealestate.com | office: 218-237-3333 | fax:218-237-3377

Affinity
REAL ESTATE INC

\$1,715,000
MLS 6394975 Lake Home
23760 County 80
Nevis MN 56467



website: www.AffinityRealEstate.com | email: info@affinityrealestate.com | office: 218-237-3333 | fax:218-237-3377

Affinity
REAL ESTATE INC

\$1,715,000
MLS 6394975 Lake Home
23760 County 80
Nevis MN 56467



website: www.AffinityRealEstate.com | email: info@affinityrealestate.com | office: 218-237-3333 | fax:218-237-3377

Affinity
REAL ESTATE INC

\$1,715,000
MLS 6394975 Lake Home
23760 County 80
Nevis MN 56467



website: www.AffinityRealEstate.com | email: info@affinityrealestate.com | office: 218-237-3333 | fax:218-237-3377

Affinity
REAL ESTATE INC

\$1,715,000
MLS 6394975 Lake Home
23760 County 80
Nevis MN 56467



website: www.AffinityRealEstate.com | email: info@affinityrealestate.com | office: 218-237-3333 | fax:218-237-3377

Affinity
REAL ESTATE INC

\$1,715,000
MLS 6394975 Lake Home
23760 County 80
Nevis MN 56467



website: www.AffinityRealEstate.com | email: info@affinityrealestate.com | office: 218-237-3333 | fax:218-237-3377

Affinity
REAL ESTATE INC

\$1,715,000
MLS 6394975 Lake Home
23760 County 80
Nevis MN 56467



website: www.AffinityRealEstate.com | email: info@affinityrealestate.com | office: 218-237-3333 | fax:218-237-3377



\$1,715,000
MLS 6394975 Lake Home
23760 County 80
Nevis MN 56467



website: www.AffinityRealEstate.com | email: info@affinityrealestate.com | office: 218-237-3333 | fax:218-237-3377



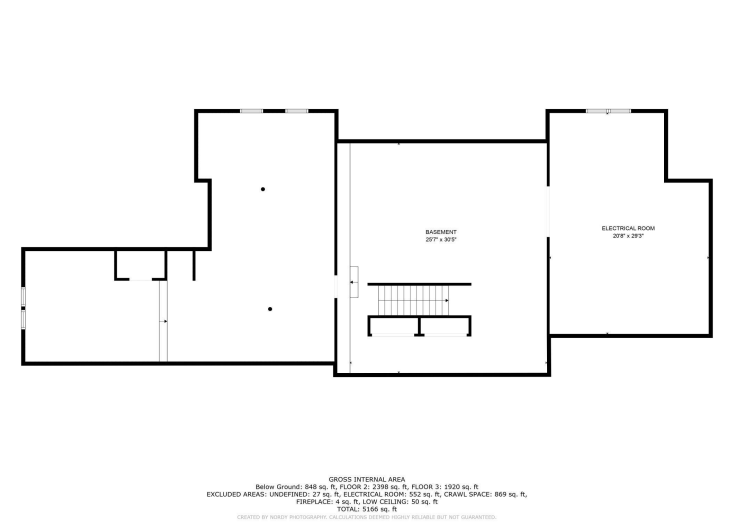
\$1,715,000
MLS 6394975 Lake Home
23760 County 80
Nevis MN 56467



website: www.AffinityRealEstate.com | email: info@affinityrealestate.com | office: 218-237-3333 | fax:218-237-3377

Affinity
REAL ESTATE INC

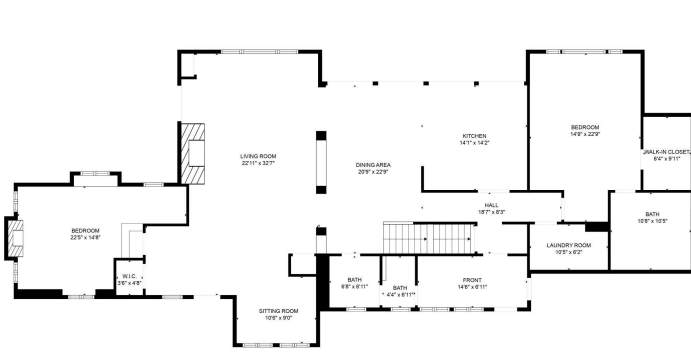
\$1,715,000
MLS 6394975 Lake Home
23760 County 80
Nevis MN 56467



website: www.AffinityRealEstate.com | email: info@affinityrealestate.com | office: 218-237-3333 | fax: 218-237-3377

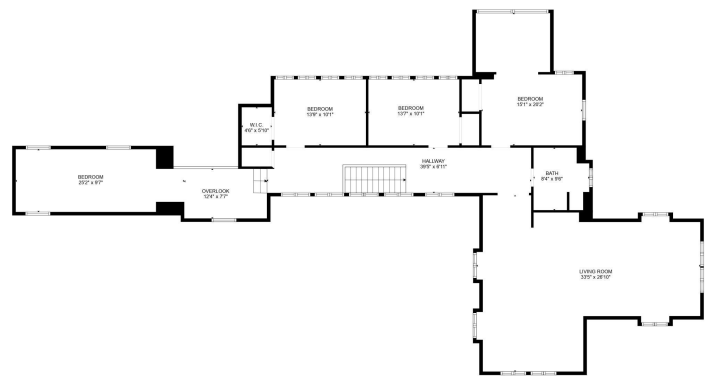


\$1,715,000
 MLS 6394975 Lake Home
 23760 County 80
 Nevis MN 56467



GROSS INTERNAL AREA
 Below Ground: 848 sq. ft., FLOOR 2: 2398 sq. ft., FLOOR 3: 1920 sq. ft.
 EXCLUDED AREAS: UNDEFINED: 27 sq. ft., ELECTRICAL ROOM: 52 sq. ft., CRAWL SPACE: 869 sq. ft.,
 FIREPLACE: 4 sq. ft., LOW CEILING: 59 sq. ft.
 TOTAL: 5166 sq. ft.

CREATED BY NORDY PHOTOGRAPHY. CALCULATIONS BEING TRULY RELIABLE BUT NOT GUARANTEED.



GROSS INTERNAL AREA
 Below Ground: 848 sq. ft., FLOOR 2: 2398 sq. ft., FLOOR 3: 1920 sq. ft.
 EXCLUDED AREAS: UNDEFINED: 27 sq. ft., ELECTRICAL ROOM: 52 sq. ft., CRAWL SPACE: 869 sq. ft.,
 FIREPLACE: 4 sq. ft., LOW CEILING: 59 sq. ft.
 TOTAL: 5166 sq. ft.

CREATED BY NORDY PHOTOGRAPHY. CALCULATIONS BEING TRULY RELIABLE BUT NOT GUARANTEED.



GROSS INTERNAL AREA
 Below Ground: 848 sq. ft., FLOOR 2: 2398 sq. ft., FLOOR 3: 1920 sq. ft.
 EXCLUDED AREAS: UNDEFINED: 27 sq. ft., ELECTRICAL ROOM: 52 sq. ft., CRAWL SPACE: 869 sq. ft.,
 FIREPLACE: 4 sq. ft., LOW CEILING: 59 sq. ft.
 TOTAL: 5166 sq. ft.

CREATED BY NORDY PHOTOGRAPHY. CALCULATIONS BEING TRULY RELIABLE BUT NOT GUARANTEED.

website: www.AffinityRealEstate.com | email: info@affinityrealestate.com | office: 218-237-3333 | fax: 218-237-3377



\$1,715,000
 MLS 6394975 Lake Home
 23760 County 80
 Nevis MN 56467