



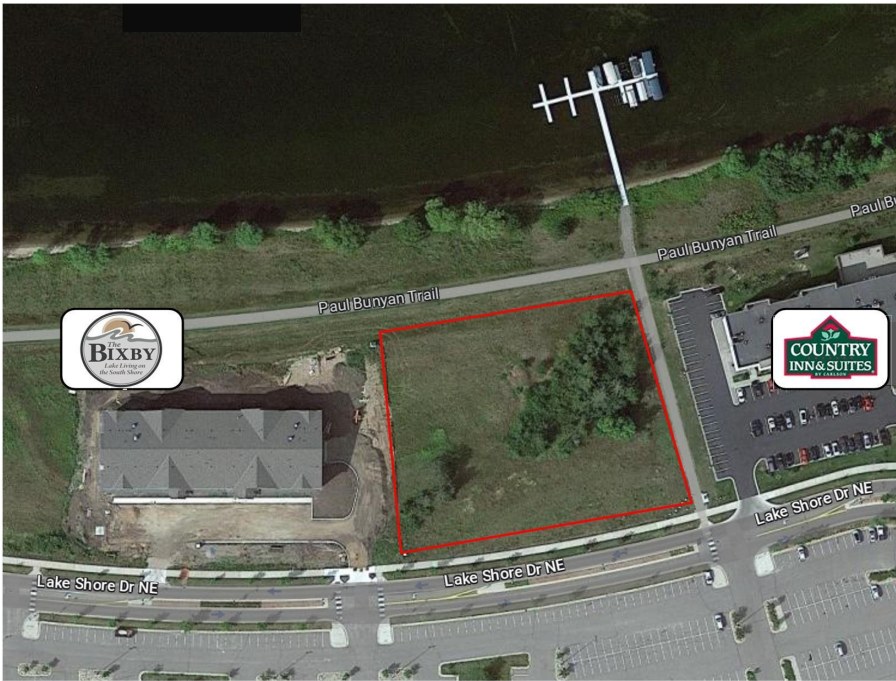
MLS 6395108 Land

\$592,003

2.01 Acres
Finished Lot(s)

L3B3 Lake Shore Drive
Bemidji MN 56601

Status: Pending



Description:

Prime lake facing parcel in Bemidji's South Shore Development! Parcel located between the Country Inn and Suites and the Bixby Condominiums; excellent opportunity for multi unit residential development or mixed commercial/residential development project.

Additional Details:

Lot Acres	2.01
Lot Dimensions	255x355
School District	31
Taxes	\$9,488
Taxes with Assessments	\$9,488
Tax Year	2023

Additional Features:

Driving Directions:

Parcel located between Country Inn and Suites and The Bixby Condominiums on the South shore of Lake Bemidji.



Listed By:
Lake-N-Woods Realty

Affinity Real Estate Inc. participates in the Regional Multiple Listing Service of Minnesota, Inc Broker Reciprocity (sm) program, allowing us to display other broker's listings on our website. All properties are subject to prior sale, change or withdrawal.



Call Affinity Real Estate
218-237-3333
info@affinityrealestate.com



Affinity Real Estate - 600 Park Avenue South - Park Rapids MN 56470



website: www.AffinityRealEstate.com | email: info@affinityrealestate.com | office: 218-237-3333 | fax:218-237-3377



\$592,003
MLS 6395108 Land
L3B3 Lake Shore Drive
Bemidji MN 56601