



MLS 6395761 Lake Home

**\$489,900**

1,348 sq ft  
3 bedrooms  
2 baths

10671 Sugar Point Drive  
Federal Dam MN 56641

Waterfront: Leech

Status: Active

**Description:**

Cute, Cute, CUTE! This quality, newer construction Leech Lake home is the perfect Up-North retreat. Situated on 139' of level, rock/sand shoreline on popular Leech Lake, this property boasts incredible western views for spectacular sunsets on 1.2 acres and is on a paved county road leading to the private driveway. This sunny cabin features cathedral ceilings, a lakeside wall of windows, open floor plan, granite countertops, polished concrete flooring with in-floor heat roughed in (only needs boiler), tongue and groove accents throughout, main floor master bedroom, main floor full bathroom, quality doors/windows/trim, two bedrooms with a "Jack and Jill" 1/2 bath on the second level plus a loft for all of your extra company, main floor washer and dryer, large covered porch, a detached single-stall garage, low maintenance exterior and so much more! Enjoy the aerial tour!

**Additional Details:**

Year Built	2013
Lot Acres	1.2
Lot Dimensions	139x444x150x335
Garage Stalls	1
School District	118
Taxes	\$1,912
Taxes with Assessments	\$1,978
Tax Year	2022

**Additional Features:**

**Fuel:** Propane **Heat:** Forced Air

**Driving Directions:**

From Walker, go east on Hwy 200 for 20.3 miles. Turn left onto CR-8 and go 12 miles. Turn left onto CR-73 for 4.2 miles and turn right onto CR-136. In 2.4 miles the property will be on the right.



Listed By:  
Bill Hansen Realty/Walker

Affinity Real Estate Inc. participates in the Regional Multiple Listing Service of Minnesota, Inc Broker Reciprocity (sm) program, allowing us to display other broker's listings on our website. All properties are subject to prior sale, change or withdrawal.



**Call Affinity Real Estate**

**218-237-3333**

**info@affinityrealestate.com**



**Affinity Real Estate - 600 Park Avenue South - Park Rapids MN 56470**



website: [www.AffinityRealEstate.com](http://www.AffinityRealEstate.com) | email: [info@affinityrealestate.com](mailto:info@affinityrealestate.com) | office: 218-237-3333 | fax: 218-237-3377

**Affinity**  
REAL ESTATE INC

**\$489,900**  
MLS 6395761 Lake Home  
10671 Sugar Point Drive  
Federal Dam MN 56641



website: [www.AffinityRealEstate.com](http://www.AffinityRealEstate.com) | email: [info@affinityrealestate.com](mailto:info@affinityrealestate.com) | office: 218-237-3333 | fax:218-237-3377

**Affinity**  
REAL ESTATE INC

**\$489,900**  
MLS 6395761 Lake Home  
10671 Sugar Point Drive  
Federal Dam MN 56641



website: [www.AffinityRealEstate.com](http://www.AffinityRealEstate.com) | email: [info@affinityrealestate.com](mailto:info@affinityrealestate.com) | office: 218-237-3333 | fax: 218-237-3377

**Affinity**  
REAL ESTATE INC

**\$489,900**  
MLS 6395761 Lake Home  
10671 Sugar Point Drive  
Federal Dam MN 56641



website: [www.AffinityRealEstate.com](http://www.AffinityRealEstate.com) | email: [info@affinityrealestate.com](mailto:info@affinityrealestate.com) | office: 218-237-3333 | fax:218-237-3377

**Affinity**  
REAL ESTATE INC

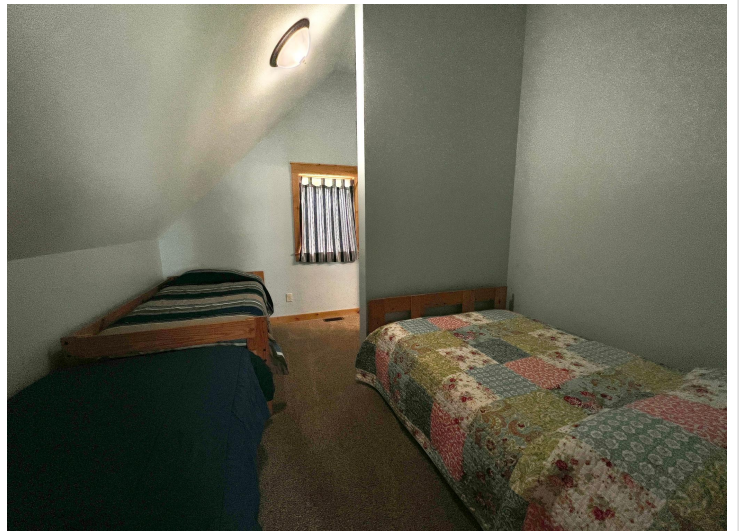
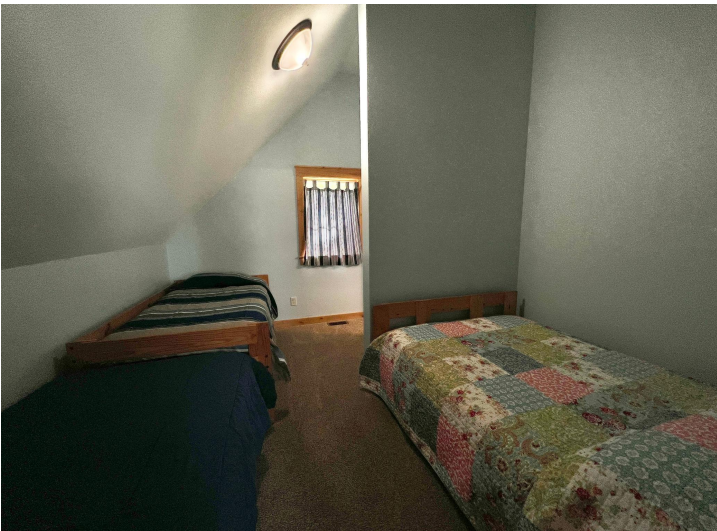
**\$489,900**  
MLS 6395761 Lake Home  
10671 Sugar Point Drive  
Federal Dam MN 56641



website: [www.AffinityRealEstate.com](http://www.AffinityRealEstate.com) | email: [info@affinityrealestate.com](mailto:info@affinityrealestate.com) | office: 218-237-3333 | fax:218-237-3377

**Affinity**  
REAL ESTATE INC

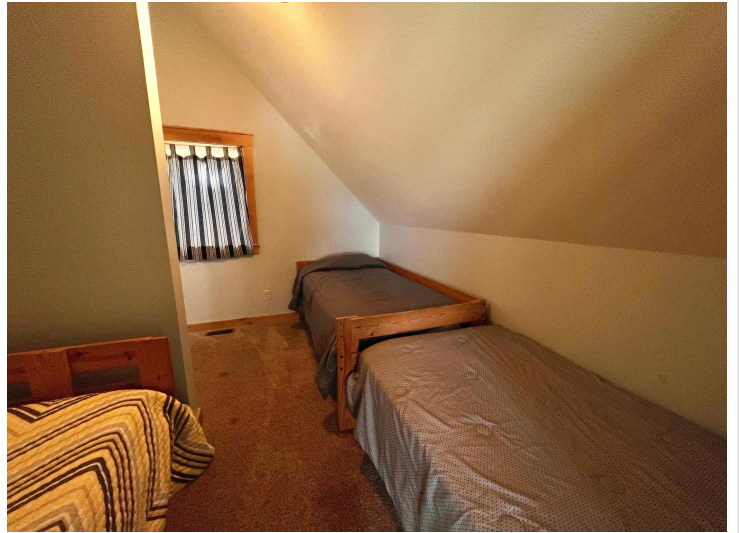
**\$489,900**  
MLS 6395761 Lake Home  
10671 Sugar Point Drive  
Federal Dam MN 56641



website: [www.AffinityRealEstate.com](http://www.AffinityRealEstate.com) | email: [info@affinityrealestate.com](mailto:info@affinityrealestate.com) | office: 218-237-3333 | fax:218-237-3377



**\$489,900**  
MLS 6395761 Lake Home  
10671 Sugar Point Drive  
Federal Dam MN 56641

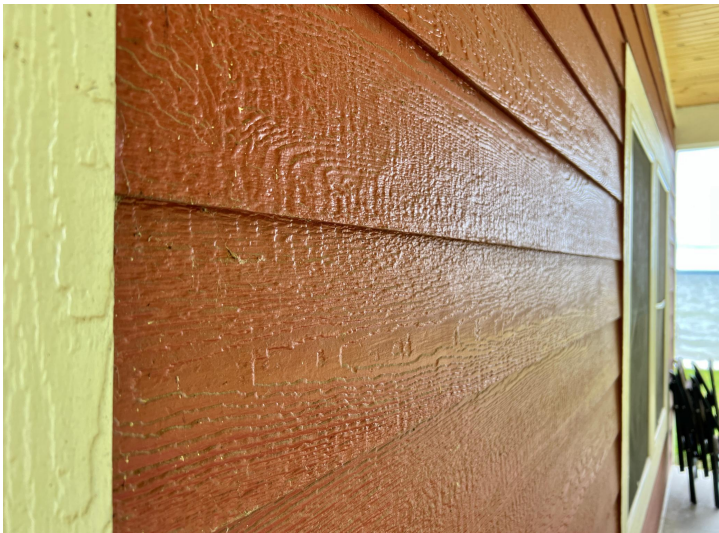


website: [www.AffinityRealEstate.com](http://www.AffinityRealEstate.com) | email: [info@affinityrealestate.com](mailto:info@affinityrealestate.com) | office: 218-237-3333 | fax:218-237-3377



**\$489,900**  
MLS 6395761 Lake Home  
10671 Sugar Point Drive  
Federal Dam MN 56641





website: [www.AffinityRealEstate.com](http://www.AffinityRealEstate.com) | email: [info@affinityrealestate.com](mailto:info@affinityrealestate.com) | office: 218-237-3333 | fax:218-237-3377



**\$489,900**  
MLS 6395761 Lake Home  
10671 Sugar Point Drive  
Federal Dam MN 56641



website: [www.AffinityRealEstate.com](http://www.AffinityRealEstate.com) | email: [info@affinityrealestate.com](mailto:info@affinityrealestate.com) | office: 218-237-3333 | fax:218-237-3377



**\$489,900**  
MLS 6395761 Lake Home  
10671 Sugar Point Drive  
Federal Dam MN 56641



website: [www.AffinityRealEstate.com](http://www.AffinityRealEstate.com) | email: [info@affinityrealestate.com](mailto:info@affinityrealestate.com) | office: 218-237-3333 | fax: 218-237-3377

**Affinity**  
REAL ESTATE INC

**\$489,900**  
MLS 6395761 Lake Home  
10671 Sugar Point Drive  
Federal Dam MN 56641



website: [www.AffinityRealEstate.com](http://www.AffinityRealEstate.com) | email: [info@affinityrealestate.com](mailto:info@affinityrealestate.com) | office: 218-237-3333 | fax:218-237-3377



**\$489,900**  
MLS 6395761 Lake Home  
10671 Sugar Point Drive  
Federal Dam MN 56641