



MLS 6396522 Residential

**\$319,900**

1,605 sq ft  
3 bedrooms  
2 baths

455 Spruce Drive  
Staples MN 56479

Status: Active

#### Description:

Uncover the epitome of modern living in this new construction three-bedroom, two-bathroom home in Staples, Minnesota. Featuring a primary ensuite with a luxurious tiled walk-in shower and a spacious walk-in closet, this home offers both comfort and convenience. Designed as a slab-on-grade home with 36" doors throughout for handicapped accessibility, it ensures everyone can move freely and comfortably. Enjoy the efficiency and comfort of natural gas forced air with central air, keeping you cozy year-round. The vaulted ceilings create an open and airy atmosphere, seamlessly blending with the stainless steel appliances in the well-appointed kitchen. With an open floor plan and stunning granite countertops, this home is an entertainer's dream. Plus, never worry about running out of hot water with the on-demand hot water system. Don't miss your chance to call this impeccable property home! Hurry to pick all your finishings.

#### Additional Details:

Year Built	2024
Lot Acres	0.35
Lot Dimensions	100x150
Garage Stalls	3
School District	2170
Taxes	\$202
Taxes with Assessments	\$202
Tax Year	2024

#### Additional Features:

**Basement:** Slab **Fuel:** Natural Gas **Garage:** 3 **Heat:** Forced Air **Sewer:** City Sewer/Connected **Water:** City Water/Connected **Air Conditioning:** Central Air

#### Driving Directions:

From Staples take airport Rd N. to Right on Spruce Drive to home on right.



Listed By:  
eXp Realty

Affinity Real Estate Inc. participates in the Regional Multiple Listing Service of Minnesota, Inc Broker Reciprocity (sm) program, allowing us to display other broker's listings on our website. All properties are subject to prior sale, change or withdrawal.



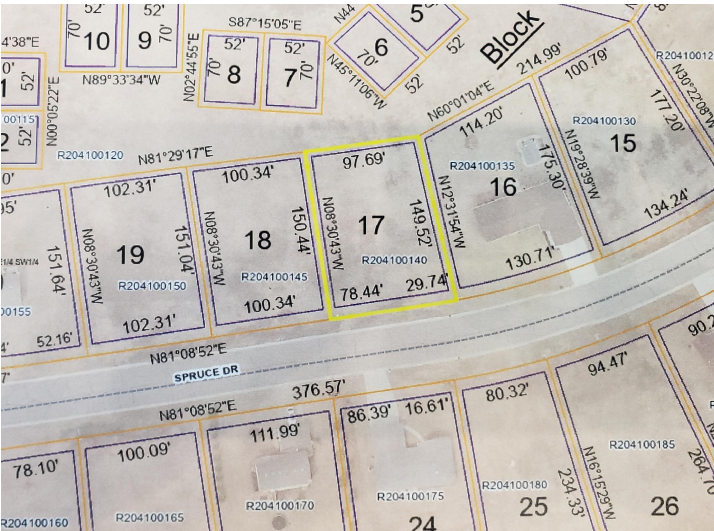
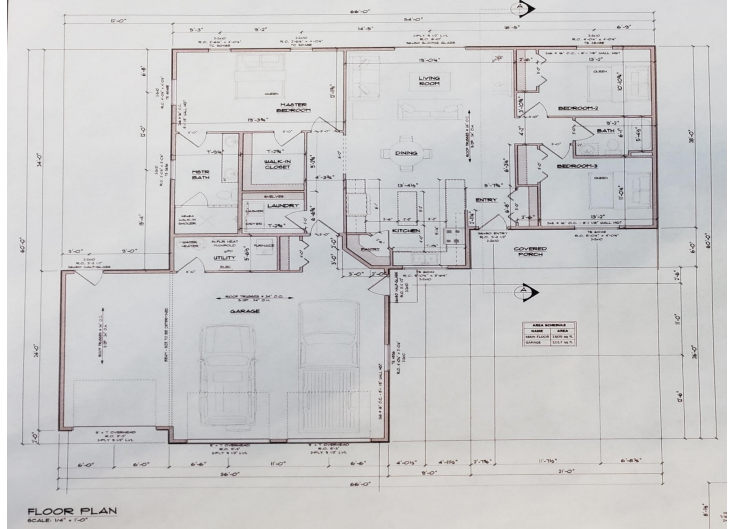
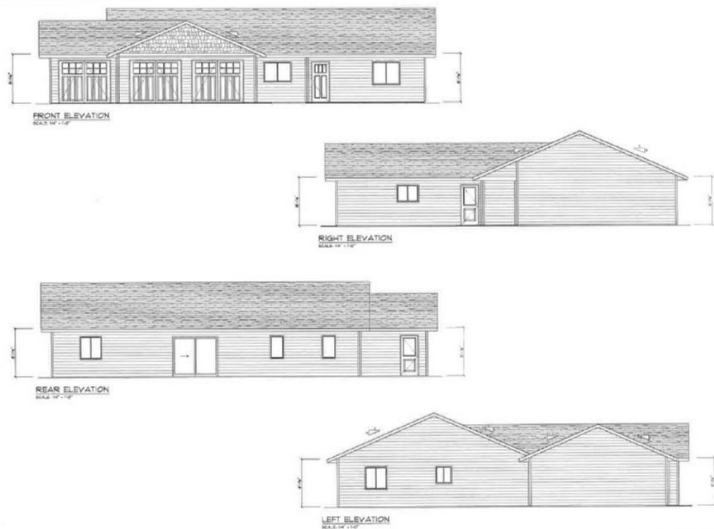
Call Affinity Real Estate

**218-237-3333**

[info@affinityrealestate.com](mailto:info@affinityrealestate.com)



Affinity Real Estate - 600 Park Avenue South - Park Rapids MN 56470



website: [www.AffinityRealEstate.com](http://www.AffinityRealEstate.com) | email: [info@affinityrealestate.com](mailto:info@affinityrealestate.com) | office: 218-237-3333 | fax: 218-237-3377



**\$319,900**  
 MLS 6396522 Residential  
 455 Spruce Drive  
 Staples MN 56479





website: [www.AffinityRealEstate.com](http://www.AffinityRealEstate.com) | email: [info@affinityrealestate.com](mailto:info@affinityrealestate.com) | office: 218-237-3333 | fax: 218-237-3377



**\$319,900**  
 MLS 6396522 Residential  
 455 Spruce Drive  
 Staples MN 56479



website: [www.AffinityRealEstate.com](http://www.AffinityRealEstate.com) | email: [info@affinityrealestate.com](mailto:info@affinityrealestate.com) | office: 218-237-3333 | fax:218-237-3377



**\$319,900**  
MLS 6396522 Residential  
455 Spruce Drive  
Staples MN 56479