



MLS 6397142 Residential

**\$639,900**

3,140 sq ft  
4 bedrooms  
5 baths

2506 100th Street  
Nisswa MN 56468

Status: Hold

**Description:**

Nestled in the Pillsbury State Forest you will find this executive four bedroom five bath private estate overlooking your own private pond offering a harmonious blend of luxury and tranquility. You will love the gourmet kitchen with high end finishes, main floor primary suite, spacious mud room, private suite above garage, attached oversized garage large enough for two SUV's and your own beautiful shop/extra garage for all your storage needs.

**Additional Details:**

Year Built	2007
Lot Acres	10
Lot Dimensions	656x662x656x663
Garage Stalls	5
School District	116
Taxes	\$3,162
Taxes with Assessments	\$3,228
Tax Year	2023

**Additional Features:**

**Basement:** Egress Window(s), Finished, Full, Insulating Concrete Forms **Fuel:** Electric, Propane **Garage:** 5 **Heat:** Forced Air, Fireplace(s), Radiant Floor **Sewer:** Private Sewer, Tank with Drainage Field **Water:** Submersible - 4 Inch, Drilled, Well **Air Conditioning:** Central Air, Window Unit(s)

**Driving Directions:**

From Nisswa, go West on County Road 77 to Right on County Road 15 (100th Street SW) to #2306 on right.



Listed By:  
Northland Sotheby's International Realty

Affinity Real Estate Inc. participates in the Regional Multiple Listing Service of Minnesota, Inc Broker Reciprocity (sm) program, allowing us to display other broker's listings on our website. All properties are subject to prior sale, change or withdrawal.



**Call Affinity Real Estate**

**218-237-3333**

**info@affinityrealestate.com**



**Affinity Real Estate - 600 Park Avenue South - Park Rapids MN 56470**





website: [www.AffinityRealEstate.com](http://www.AffinityRealEstate.com) | email: [info@affinityrealestate.com](mailto:info@affinityrealestate.com) | office: 218-237-3333 | fax: 218-237-3377

**Affinity**  
REAL ESTATE INC

**\$639,900**  
MLS 6397142 Residential  
2506 100th Street  
Nisswa MN 56468





website: [www.AffinityRealEstate.com](http://www.AffinityRealEstate.com) | email: [info@affinityrealestate.com](mailto:info@affinityrealestate.com) | office: 218-237-3333 | fax: 218-237-3377

**Affinity**  
REAL ESTATE INC

**\$639,900**  
MLS 6397142 Residential  
2506 100th Street  
Nisswa MN 56468





website: [www.AffinityRealEstate.com](http://www.AffinityRealEstate.com) | email: [info@affinityrealestate.com](mailto:info@affinityrealestate.com) | office: 218-237-3333 | fax: 218-237-3377

**Affinity**  
REAL ESTATE INC

**\$639,900**  
MLS 6397142 Residential  
2506 100th Street  
Nisswa MN 56468





website: [www.AffinityRealEstate.com](http://www.AffinityRealEstate.com) | email: [info@affinityrealestate.com](mailto:info@affinityrealestate.com) | office: 218-237-3333 | fax: 218-237-3377

**Affinity**  
REAL ESTATE INC

**\$639,900**  
MLS 6397142 Residential  
2506 100th Street  
Nisswa MN 56468



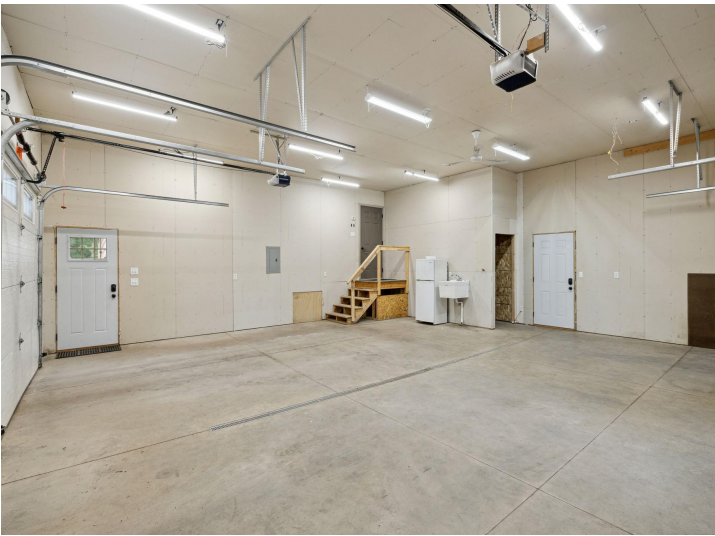


website: [www.AffinityRealEstate.com](http://www.AffinityRealEstate.com) | email: [info@affinityrealestate.com](mailto:info@affinityrealestate.com) | office: 218-237-3333 | fax: 218-237-3377



**\$639,900**  
 MLS 6397142 Residential  
 2506 100th Street  
 Nisswa MN 56468





website: [www.AffinityRealEstate.com](http://www.AffinityRealEstate.com) | email: [info@affinityrealestate.com](mailto:info@affinityrealestate.com) | office: 218-237-3333 | fax: 218-237-3377



**\$639,900**  
 MLS 6397142 Residential  
 2506 100th Street  
 Nisswa MN 56468