



MLS 6398579 Lake Land

\$164,999

Description:

Tucked away just outside Hackensack awaits Larson lake. Enjoy the peaceful private lake, while being remote. A perfect opportunity to build your cabin or house on nearly 4 acres on the lake. Also, next to an additional 250 acres of public land and trails to enjoy year round. Close not only to Walker but the Brainerd Lakes area as well.

Additional Details:

Lot Acres	3.92
Lot Dimensions	170755.2
School District	113
Taxes	\$296
Taxes with Assessments	\$296
Tax Year	2023

Additional Features:

Driving Directions:

From Hackensack head north and turn right on Birch Lake rd, then take a left on 36th ave NW, and take your first right onto Lower Larson lake Rd NW, stay to the right and the property will be on the left side.



Listed By:
Woods to Water Real Estate

Affinity Real Estate Inc. participates in the Regional Multiple Listing Service of Minnesota, Inc Broker Reciprocity (sm) program, allowing us to display other broker's listings on our website. All properties are subject to prior sale, change or withdrawal.



Call Affinity Real Estate

218-237-3333

info@affinityrealestate.com



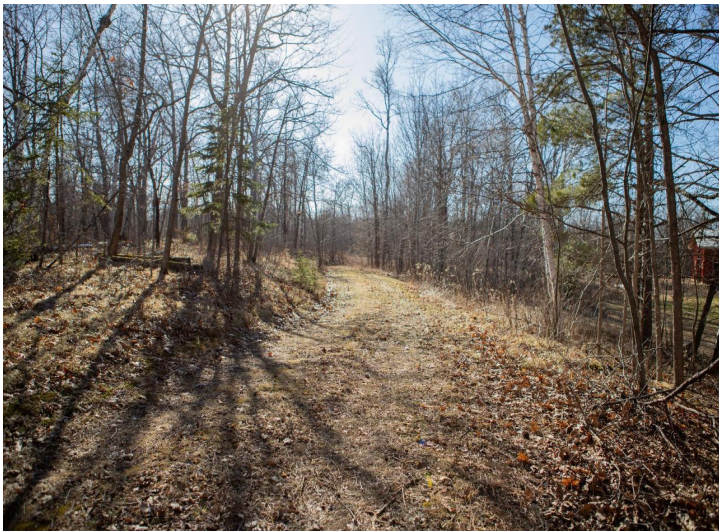
Affinity Real Estate - 600 Park Avenue South - Park Rapids MN 56470



website: www.AffinityRealEstate.com | email: info@affinityrealestate.com | office: 218-237-3333 | fax:218-237-3377



\$164,999
MLS 6398579 Lake Land
TBD Lower Larson NW Lane
Hackensack MN 56452



website: www.AffinityRealEstate.com | email: info@affinityrealestate.com | office: 218-237-3333 | fax:218-237-3377



\$164,999
MLS 6398579 Lake Land
TBD Lower Larson NW Lane
Hackensack MN 56452



website: www.AffinityRealEstate.com | email: info@affinityrealestate.com | office: 218-237-3333 | fax:218-237-3377



\$164,999
MLS 6398579 Lake Land
TBD Lower Larson NW Lane
Hackensack MN 56452