



MLS 6398779 Farm

**\$1,200,000**

427 Acres

21881 320th Street  
Sebeka MN 56477

Status: Hold

**Description:**

RARE OPPORTUNITY to own 427 acres of gently rolling hardwoods, pasture, grazing fields, and meadows that is home to lots of wildlife and a hunter's paradise. Located in the heart of central Minnesota, whitetail deer, turkey, grouse, bear, ducks, geese and pheasants have all been spotted on the property. The secluded land boasts spectacular scenic views and a peaceful quietness. The slab home consists of 3 bedrooms and 3 bathrooms with a primary suite and an open floor plan and a nice walkout patio. Plus, there is fiber optics to the home. A 36x24 garage and a 72x32 barn with a heated tack room and horse stalls compliment this exceptional property. If peace, quiet and paradise are what you're looking for, this property is it! Be sure to check out the virtual tour!

**Additional Details:**

Year Built	2018
Lot Acres	427
Lot Dimensions	Irregular
Garage Stalls	2
School District	820
Taxes	\$4,582
Taxes with Assessments	\$4,582
Tax Year	2023

**Additional Features:**

**Basement:** None **Fuel:** Propane, Wood **Garage:** 2 **Heat:** Ductless Mini-Split, Hot Water, Radiant Floor, Outdoor Boiler **Sewer:** Private Sewer, Tank with Drainage Field **Water:** Drilled, Well **Air Conditioning:** Ductless Mini-Split

**Driving Directions:**

From Nimrod: Head North on Co Hwy 14/State Hwy 14 for 4.3 miles to property on South side of the road. (LEFT)



Listed By:  
RE/MAX Results - Baxter

Affinity Real Estate Inc. participates in the Regional Multiple Listing Service of Minnesota, Inc Broker Reciprocity (sm) program, allowing us to display other broker's listings on our website. All properties are subject to prior sale, change or withdrawal.



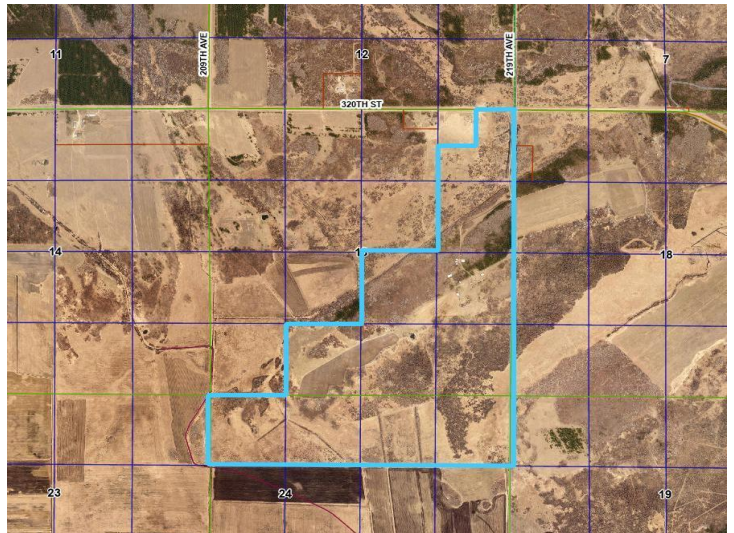
Call Affinity Real Estate

**218-237-3333**

[info@affinityrealestate.com](mailto:info@affinityrealestate.com)



Affinity Real Estate - 600 Park Avenue South - Park Rapids MN 56470



website: [www.AffinityRealEstate.com](http://www.AffinityRealEstate.com) | email: [info@affinityrealestate.com](mailto:info@affinityrealestate.com) | office: 218-237-3333 | fax: 218-237-3377

**Affinity**  
REAL ESTATE INC

**\$1,200,000**  
MLS 6398779 Farm  
21881 320th Street  
Sebeka MN 56477



website: [www.AffinityRealEstate.com](http://www.AffinityRealEstate.com) | email: [info@affinityrealestate.com](mailto:info@affinityrealestate.com) | office: 218-237-3333 | fax:218-237-3377



**\$1,200,000**  
MLS 6398779 Farm  
21881 320th Street  
Sebeka MN 56477



website: [www.AffinityRealEstate.com](http://www.AffinityRealEstate.com) | email: [info@affinityrealestate.com](mailto:info@affinityrealestate.com) | office: 218-237-3333 | fax: 218-237-3377

**Affinity**  
REAL ESTATE INC

**\$1,200,000**  
MLS 6398779 Farm  
21881 320th Street  
Sebeka MN 56477



website: [www.AffinityRealEstate.com](http://www.AffinityRealEstate.com) | email: [info@affinityrealestate.com](mailto:info@affinityrealestate.com) | office: 218-237-3333 | fax:218-237-3377

**Affinity**  
REAL ESTATE INC

**\$1,200,000**  
MLS 6398779 Farm  
21881 320th Street  
Sebeka MN 56477



website: [www.AffinityRealEstate.com](http://www.AffinityRealEstate.com) | email: [info@affinityrealestate.com](mailto:info@affinityrealestate.com) | office: 218-237-3333 | fax:218-237-3377

**Affinity**  
REAL ESTATE INC

**\$1,200,000**  
MLS 6398779 Farm  
21881 320th Street  
Sebeka MN 56477



website: [www.AffinityRealEstate.com](http://www.AffinityRealEstate.com) | email: [info@affinityrealestate.com](mailto:info@affinityrealestate.com) | office: 218-237-3333 | fax:218-237-3377



**\$1,200,000**  
MLS 6398779 Farm  
21881 320th Street  
Sebeka MN 56477



website: [www.AffinityRealEstate.com](http://www.AffinityRealEstate.com) | email: [info@affinityrealestate.com](mailto:info@affinityrealestate.com) | office: 218-237-3333 | fax:218-237-3377

**Affinity**  
REAL ESTATE INC

**\$1,200,000**  
MLS 6398779 Farm  
21881 320th Street  
Sebeka MN 56477





website: [www.AffinityRealEstate.com](http://www.AffinityRealEstate.com) | email: [info@affinityrealestate.com](mailto:info@affinityrealestate.com) | office: 218-237-3333 | fax:218-237-3377

**Affinity**  
REAL ESTATE INC

**\$1,200,000**  
MLS 6398779 Farm  
21881 320th Street  
Sebeka MN 56477



website: [www.AffinityRealEstate.com](http://www.AffinityRealEstate.com) | email: [info@affinityrealestate.com](mailto:info@affinityrealestate.com) | office: 218-237-3333 | fax:218-237-3377



**\$1,200,000**  
MLS 6398779 Farm  
21881 320th Street  
Sebeka MN 56477