



MLS 6400500 Lake Land

**\$250,000**

**Description:**

7.4 acres on beautiful Shell Lake with about 320' of shoreline. This property is partially cleared, ready to be enjoyed as is or to build your lake shore home. It is a beautiful remote retreat with serenity. Shell Lake is located in Becker County between Shell Lake Resort and Campground and the Wilds Resort and Campground on Shell Lake. Seller has easement from neighbor on west border to access lake on that side.

**Additional Details:**

Lot Acres	7.4
Lot Dimensions	328 x 705 x 250 x 373 x 653
School District	23
Taxes	\$812
Taxes with Assessments	\$812
Tax Year	2023

**Additional Features:**

**Driving Directions:**

From Osage, go west on 34. Take a right on 460th St. Take a left on 228th St, road curves to right and turns into 455th St. Take a left at the T, S. Shell Lake Road. Take a left on Idas Road. Follow all the way to the dead end. Access lake with driveway to the left & main property straight ahead.



Listed By:  
National Realty Guild

Affinity Real Estate Inc. participates in the Regional Multiple Listing Service of Minnesota, Inc Broker Reciprocity (sm) program, allowing us to display other broker's listings on our website. All properties are subject to prior sale, change or withdrawal.



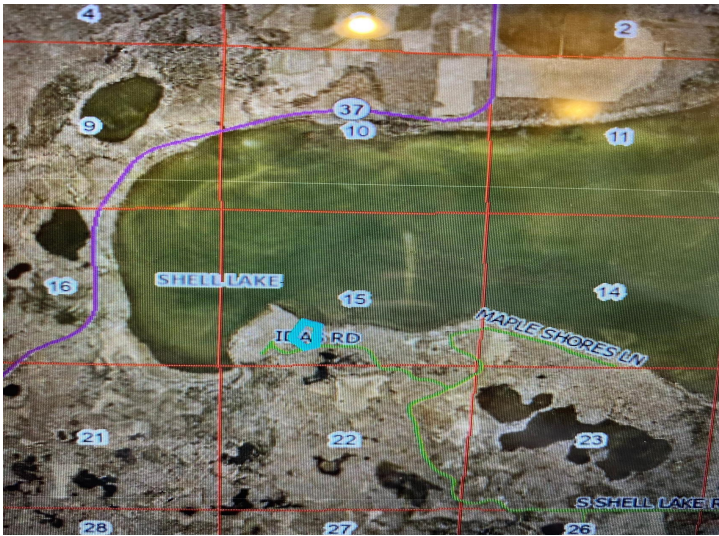
**Call Affinity Real Estate**

**218-237-3333**

**info@affinityrealestate.com**



**Affinity Real Estate - 600 Park Avenue South - Park Rapids MN 56470**



website: [www.AffinityRealEstate.com](http://www.AffinityRealEstate.com) | email: [info@affinityrealestate.com](mailto:info@affinityrealestate.com) | office: 218-237-3333 | fax: 218-237-3377

**Affinity**  
REAL ESTATE INC

**\$250,000**  
MLS 6400500 Lake Land  
TBD IDAS ROAD  
Osage MN 56570



website: [www.AffinityRealEstate.com](http://www.AffinityRealEstate.com) | email: [info@affinityrealestate.com](mailto:info@affinityrealestate.com) | office: 218-237-3333 | fax:218-237-3377



**\$250,000**  
MLS 6400500 Lake Land  
TBD IDAS ROAD  
Osage MN 56570



website: [www.AffinityRealEstate.com](http://www.AffinityRealEstate.com) | email: [info@affinityrealestate.com](mailto:info@affinityrealestate.com) | office: 218-237-3333 | fax:218-237-3377



**\$250,000**  
MLS 6400500 Lake Land  
TBD IDAS ROAD  
Osage MN 56570



website: [www.AffinityRealEstate.com](http://www.AffinityRealEstate.com) | email: [info@affinityrealestate.com](mailto:info@affinityrealestate.com) | office: 218-237-3333 | fax:218-237-3377



**\$250,000**  
MLS 6400500 Lake Land  
TBD IDAS ROAD  
Osage MN 56570



website: [www.AffinityRealEstate.com](http://www.AffinityRealEstate.com) | email: [info@affinityrealestate.com](mailto:info@affinityrealestate.com) | office: 218-237-3333 | fax:218-237-3377



**\$250,000**  
MLS 6400500 Lake Land  
TBD IDAS ROAD  
Osage MN 56570