



MLS 6402342 Residential

\$289,000

1,292 sq ft
2 bedrooms
1 baths

TBD Shedhorn Street
Bemidji MN 56601

Status: Canceled

Description:

One level living with an open floor plan. Enjoy this new 2bd, 1ba home in Bemidji's newer development, Mountain View Community. The home has vaulted ceilings, nice sized kitchen with an island, and a attached heated double garage with a concrete driveway. Mountain View is connected to natural gas, city water and sewer. Just outside your door you will find the true meaning of community so make the move to Bemidji where you will have access to music, arts, sports, theaters, parks, fishing, skating, skiing, hiking and biking. This is a newer development, so you have the opportunity to choose another lot and have another home built. NOTE: This home is not yet built. Call for more information and a tour today!

Additional Details:

Year Built	2023
Lot Acres	0.23
Lot Dimensions	87x119x119x84
Garage Stalls	2
School District	31
Taxes	\$222
Taxes with Assessments	\$222
Tax Year	2023

Additional Features:

Basement: None **Fuel:** Natural Gas **Garage:** 2 **Heat:** Forced Air **Sewer:** City Sewer - In Street **Water:** City Water - In Street **Air Conditioning:** Central Air

Driving Directions:

South on Washington Ave S to Shedhorn St SW. Right on Shedhorn St SW. Lot on the right



Listed By:
Better Homes and Gardens Real Estate First Cho

Affinity Real Estate Inc. participates in the Regional Multiple Listing Service of Minnesota, Inc Broker Reciprocity (sm) program, allowing us to display other broker's listings on our website. All properties are subject to prior sale, change or withdrawal.



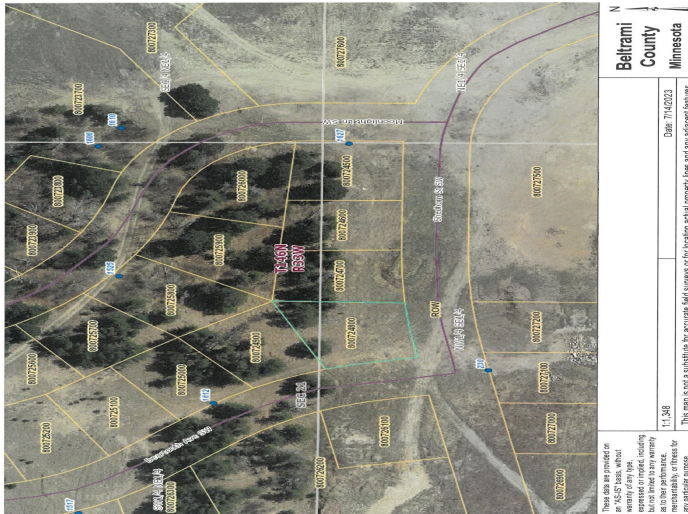
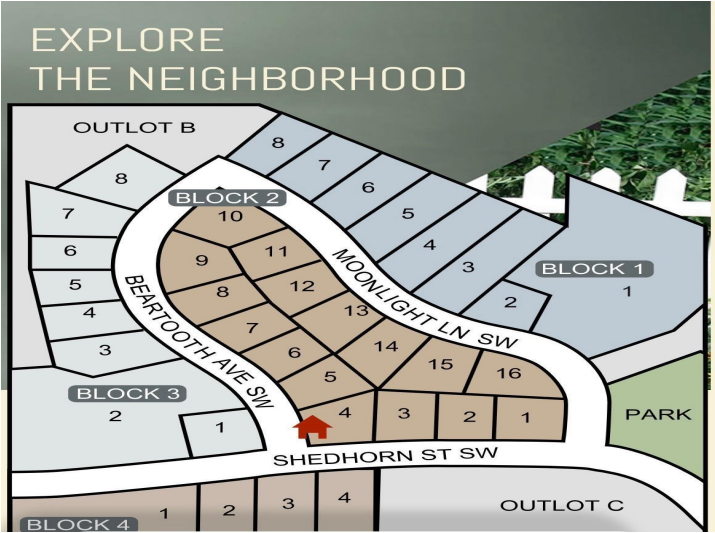
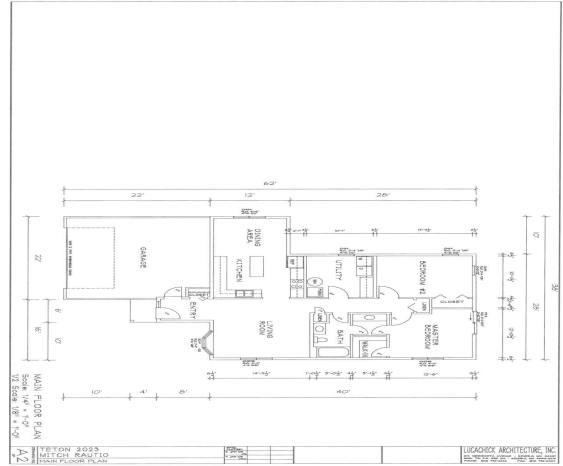
Call Affinity Real Estate

218-237-3333

info@affinityrealestate.com



Affinity Real Estate - 600 Park Avenue South - Park Rapids MN 56470



website: www.AffinityRealEstate.com | email: info@affinityrealestate.com | office: 218-237-3333 | fax:218-237-3377



\$289,000
 MLS 6402342 Residential
 TBD Shedhorn Street
 Bemidji MN 56601