



MLS 6403225 Residential

\$579,900

2,212 sq ft
4 bedrooms
3 baths

4153 Pillsbury Street
Pequot Lakes MN 56472

Status: Active

Description:

Step into this meticulously crafted custom home, designed for seamless single-level living with meticulous attention to detail. The open-concept layout welcomes you into a spacious sanctuary, perfect for both relaxation and entertainment.

Indulge in the luxury of the master ensuite, a private retreat that opens onto an expansive patio, ideal for hosting gatherings and enjoying outdoor living. Become the favored host among friends and family with the addition of a custom rustic bar and living area, conveniently situated off the attached garage.

Outside, revel in the beauty of the meticulously maintained yard, a lush oasis in Pequot. This property seamlessly connects to a 40x64 heated shop, offering ample space for additional living quarters, complete with a bedroom and bathroom. Whether you envision a workshop, storage for recreational toys or simply extra space to roam, this building provides limitless possibilities.

Additional Details:

Year Built	2017
Lot Acres	1.06
Lot Dimensions	200x260
Garage Stalls	6
School District	186
Taxes	\$2,664
Taxes with Assessments	\$2,664
Tax Year	2023

Additional Features:

Basement: Concrete **Fuel:** Electric, Natural Gas **Garage:** 6 **Heat:** Forced Air **Sewer:** Private Sewer **Water:** Drilled, Well **Air Conditioning:** Central Air

Driving Directions:

From the stop lights in Pequot Lakes on Patriot Avenue go South and take a right onto Pillsbury Street, the property will be on your left.



Listed By:
Woods to Water Real Estate

Affinity Real Estate Inc. participates in the Regional Multiple Listing Service of Minnesota, Inc Broker Reciprocity (sm) program, allowing us to display other broker's listings on our website. All properties are subject to prior sale, change or withdrawal.



Call Affinity Real Estate

218-237-3333

info@affinityrealestate.com



Affinity Real Estate - 600 Park Avenue South - Park Rapids MN 56470



website: www.AffinityRealEstate.com | email: info@affinityrealestate.com | office: 218-237-3333 | fax: 218-237-3377

Affinity
REAL ESTATE INC

\$579,900
MLS 6403225 Residential
4153 Pillsbury Street
Pequot Lakes MN 56472



website: www.AffinityRealEstate.com | email: info@affinityrealestate.com | office: 218-237-3333 | fax: 218-237-3377

Affinity
REAL ESTATE INC

\$579,900
MLS 6403225 Residential
4153 Pillsbury Street
Pequot Lakes MN 56472



website: www.AffinityRealEstate.com | email: info@affinityrealestate.com | office: 218-237-3333 | fax: 218-237-3377

Affinity
REAL ESTATE INC

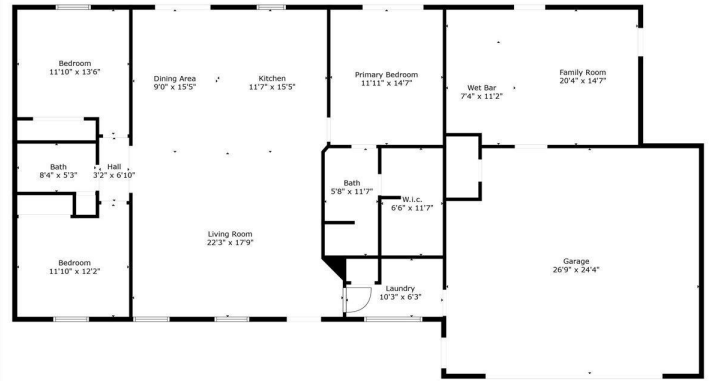
\$579,900
MLS 6403225 Residential
4153 Pillsbury Street
Pequot Lakes MN 56472



website: www.AffinityRealEstate.com | email: info@affinityrealestate.com | office: 218-237-3333 | fax: 218-237-3377

Affinity
REAL ESTATE INC

\$579,900
MLS 6403225 Residential
4153 Pillsbury Street
Pequot Lakes MN 56472



GROSS INTERNAL AREA
FLOOR 1: 1812 sq. ft.
EXCLUDED AREAS: GARAGE: 650 sq. ft.
TOTAL: 1812 sq. ft.
Size And Dimensions Are Approximate. Actual Measurements May Vary.



website: www.AffinityRealEstate.com | email: info@affinityrealestate.com | office: 218-237-3333 | fax: 218-237-3377

Affinity
REAL ESTATE INC

\$579,900
MLS 6403225 Residential
4153 Pillsbury Street
Pequot Lakes MN 56472



website: www.AffinityRealEstate.com | email: info@affinityrealestate.com | office: 218-237-3333 | fax: 218-237-3377

Affinity
REAL ESTATE INC

\$579,900

MLS 6403225 Residential
4153 Pillsbury Street
Pequot Lakes MN 56472



website: www.AffinityRealEstate.com | email: info@affinityrealestate.com | office: 218-237-3333 | fax: 218-237-3377



\$579,900
 MLS 6403225 Residential
 4153 Pillsbury Street
 Pequot Lakes MN 56472