



MLS 6405729 Lake Home

\$264,900

2,602 sq ft
6 bedrooms
2 baths

114 Washburn Avenue
Backus MN 56435

Waterfront: Pine Mountain

Status: Hold

Description:

Discover the timeless charm of "The Bailey House" - a historic 6-bedroom, 2-bathroom home built in 1902. Positioned overlooking the shores of Pine Mountain Lake in Backus, MN. Upon entering the residence, you're greeted by a grand staircase and original hardwood floors that lead throughout this spacious home. Currently a vacation rental, this property offers ample income potential or could easily be a full-time residence. Enjoy sunsets from the westward-facing sun room, the perfect spot to relax after a day of exploring the local lakes, towns, golf courses and more. With close proximity to surrounding parks, the well-known Paul Bunyan Trail and the Foot Hills State Forest, you'll find endless enjoyment and entertainment, paired with unmatched history and charm.

Additional Details:

Year Built	1902
Lot Acres	0.57
Lot Dimensions	139x108x137x150
Garage Stalls	1
School District	2174
Taxes	\$1,592
Taxes with Assessments	\$1,794
Tax Year	2023

Additional Features:

Basement: Sump Pump, Unfinished **Fuel:** Oil **Garage:** 1 **Heat:** Forced Air **Sewer:** City Sewer/Connected **Water:** City Water/Connected **Air Conditioning:** None

Driving Directions:

From 371 in Backus turn West on 87 to straight for .7 miles will turn into Washburn Ave, home on right.



Listed By:
Woods to Water Real Estate

Affinity Real Estate Inc. participates in the Regional Multiple Listing Service of Minnesota, Inc Broker Reciprocity (sm) program, allowing us to display other broker's listings on our website. All properties are subject to prior sale, change or withdrawal.



Call Affinity Real Estate

218-237-3333

info@affinityrealestate.com



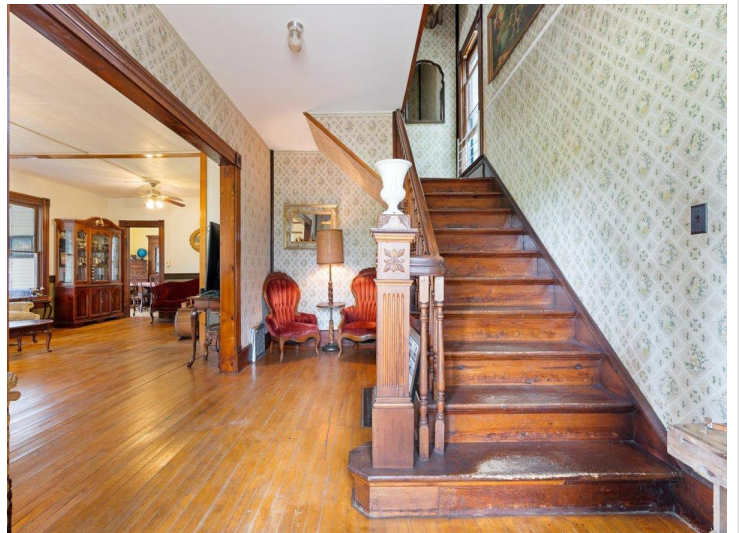
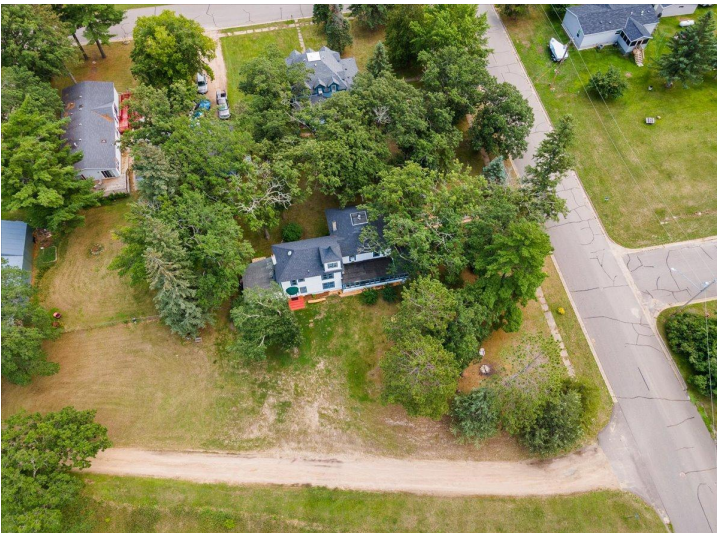
Affinity Real Estate - 600 Park Avenue South - Park Rapids MN 56470



website: www.AffinityRealEstate.com | email: info@affinityrealestate.com | office: 218-237-3333 | fax:218-237-3377

Affinity
REAL ESTATE INC

\$264,900
MLS 6405729 Lake Home
114 Washburn Avenue
Backus MN 56435



website: www.AffinityRealEstate.com | email: info@affinityrealestate.com | office: 218-237-3333 | fax:218-237-3377

Affinity
REAL ESTATE INC

\$264,900
MLS 6405729 Lake Home
114 Washburn Avenue
Backus MN 56435



website: www.AffinityRealEstate.com | email: info@affinityrealestate.com | office: 218-237-3333 | fax: 218-237-3377

Affinity
REAL ESTATE INC

\$264,900
MLS 6405729 Lake Home
114 Washburn Avenue
Backus MN 56435



website: www.AffinityRealEstate.com | email: info@affinityrealestate.com | office: 218-237-3333 | fax:218-237-3377

Affinity
REAL ESTATE INC

\$264,900
MLS 6405729 Lake Home
114 Washburn Avenue
Backus MN 56435



website: www.AffinityRealEstate.com | email: info@affinityrealestate.com | office: 218-237-3333 | fax:218-237-3377



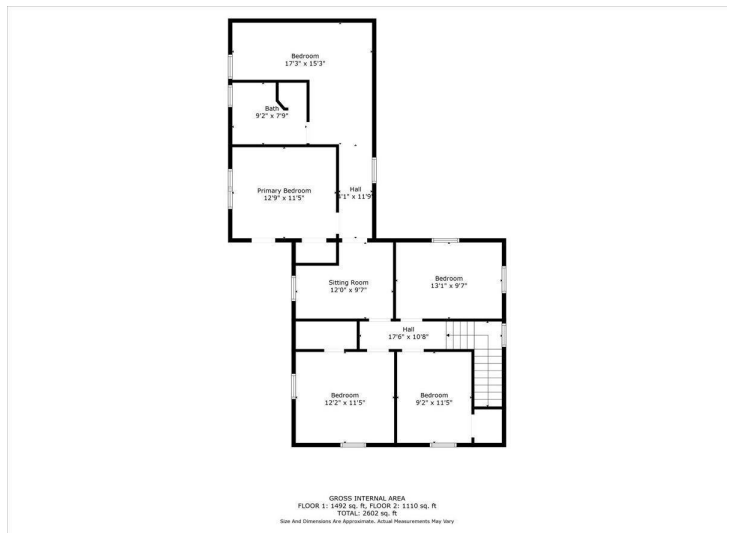
\$264,900
MLS 6405729 Lake Home
114 Washburn Avenue
Backus MN 56435



website: www.AffinityRealEstate.com | email: info@affinityrealestate.com | office: 218-237-3333 | fax:218-237-3377

Affinity
REAL ESTATE INC

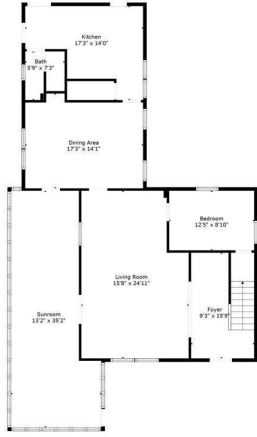
\$264,900
MLS 6405729 Lake Home
114 Washburn Avenue
Backus MN 56435



[website: www.AffinityRealEstate.com](http://www.AffinityRealEstate.com) |
 [email: info@affinityrealestate.com](mailto:info@affinityrealestate.com) |
 office: 218-237-3333 | fax:218-237-3377



\$264,900
 MLS 6405729 Lake Home
 114 Washburn Avenue
 Backus MN 56435



GROSS INTERNAL AREA
FLOOR 1: 1492 sq. ft. FLOOR 2: 1110 sq. ft.
TOTAL: 2602 sq. ft.
Size And Dimensions Not Approximate, Actual Measurements May Vary.

website: www.AffinityRealEstate.com | email: info@affinityrealestate.com | office: 218-237-3333 | fax:218-237-3377



\$264,900
MLS 6405729 Lake Home
114 Washburn Avenue
Backus MN 56435