



MLS 6406064 Lake Land

\$110,000

Description:

150' of lakeshore on the premier fishing and sporting Middle Leaf Lake. This hard to find buildable 1.6 acres offers great building options on both sides of Leaf River Rd. There is a gently slope to the lake and nice tree covering to offer privacy and shade. Come take a look!

Additional Details:

Lot Acres	1.6
Lot Dimensions	see GIS overhead
School District	545
Taxes	\$620
Taxes with Assessments	\$620
Tax Year	2024

Additional Features:

Driving Directions:

From 208 MN-108 in Ottertail head east on MN-108 E/Main St for 5.3 miles. Turn left onto Leaf River Rd. Property is in 1.2 miles -watch for sign by approach.



Listed By:
Central MN Realty LLC

Affinity Real Estate Inc. participates in the Regional Multiple Listing Service of Minnesota, Inc Broker Reciprocity (sm) program, allowing us to display other broker's listings on our website. All properties are subject to prior sale, change or withdrawal.



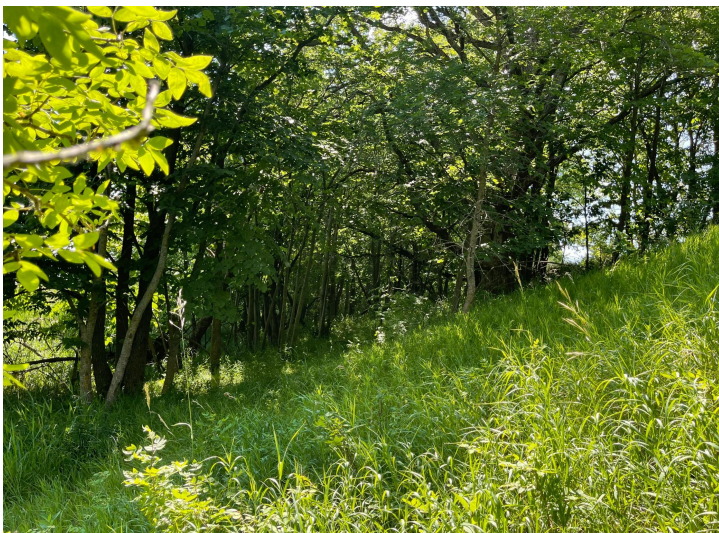
Call Affinity Real Estate

218-237-3333

info@affinityrealestate.com



Affinity Real Estate - 600 Park Avenue South - Park Rapids MN 56470



website: www.AffinityRealEstate.com | email: info@affinityrealestate.com | office: 218-237-3333 | fax:218-237-3377



\$110,000
MLS 6406064 Lake Land
XX Leaf River Rd
Ottertail MN 56571



website: www.AffinityRealEstate.com | email: info@affinityrealestate.com | office: 218-237-3333 | fax:218-237-3377



\$110,000
MLS 6406064 Lake Land
XX Leaf River Rd
Ottertail MN 56571