



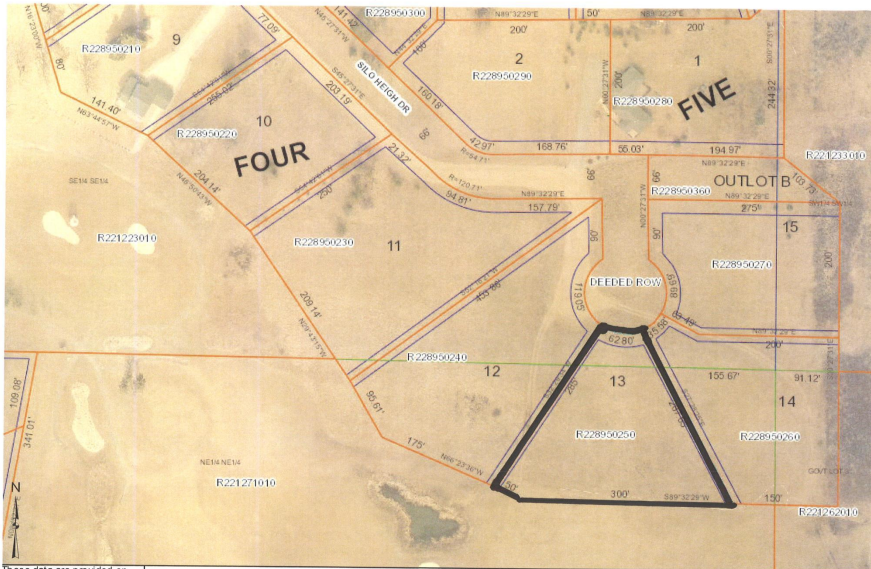
MLS 6406153 Land

**\$29,900**

1.21 Acres  
Finished Lot(s)

261 Silo Heights Drive  
Wadena MN 56482

Status: Active



These data are provided on an "AS-IS" basis, without warranty of any type, expressed or implied, including but not limited to any warranty as to their performance, merchantability, or fitness for any particular purpose.

261 Silo Heights Dr  
1:1.426



**Description:**

DRASTIC PRICE REDUCTION.....seller finance is possible !JUST a Driver, 3 wood and a wedge from the CLUB HOUSE. Southern exposure for maximum winter comfort also. Possible Contract for Deed.

**Additional Details:**

Lot Acres	1.21
Lot Dimensions	63x287x350x285
School District	2155
Taxes	\$340
Taxes with Assessments	\$340
Tax Year	2023

**Additional Features:**

**Driving Directions:**

From Wadena north on Hwy 71 approximately 4 miles to Leaf River Road, then east 1 mile to Silo Heights Dr, turn right to property.



Listed By:  
The Gores Company

Affinity Real Estate Inc. participates in the Regional Multiple Listing Service of Minnesota, Inc Broker Reciprocity (sm) program, allowing us to display other broker's listings on our website. All properties are subject to prior sale, change or withdrawal.



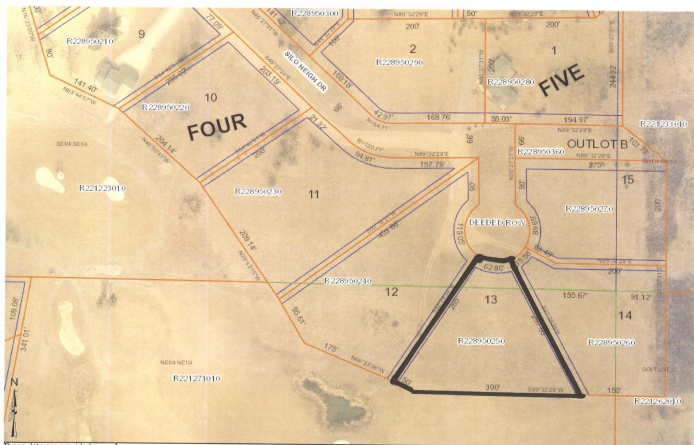
Call Affinity Real Estate

**218-237-3333**

[info@affinityrealestate.com](mailto:info@affinityrealestate.com)



Affinity Real Estate - 600 Park Avenue South - Park Rapids MN 56470



These data are provided on an "AS-IS" basis, without warranty of any type, including but not limited to any warranty as to their performance, merchantability, or fitness for any particular purposes.

261 Silo Heights Dr

1:1,428



website: [www.AffinityRealEstate.com](http://www.AffinityRealEstate.com) | email: [info@affinityrealestate.com](mailto:info@affinityrealestate.com) | office: 218-237-3333 | fax: 218-237-3377



**\$29,900**  
 MLS 6406153 Land  
 261 Silo Heights Drive  
 Wadena MN 56482