



MLS 6406839 Residential

**\$339,000**

2,312 sq ft  
3 bedrooms  
2 baths

13438 308th Street  
Sebeka MN 56477

Status: Closed

#### Description:

Make this 10 acres of paradise yours today and start enjoying this beautiful country setting with the Kitten Creek running through it, along with the 3 bedroom, 2 bath home with a 3 car insulated attached garage, 30' x 30' pole shed with a concrete floor, garden shed, deck and the walk-out 3 season porch makes this property perfect for endless possibilities. The lower level is finished to include a sauna, walk-in shower, Spacious 3rd bedroom, and the walk out to the 3 season porch. Located just North of Sebeka and less than 1 mile East of Hwy 71. Call now to schedule your private tour and make this dream property yours today!

#### Additional Details:

Year Built	1980
Lot Acres	10
Lot Dimensions	Irr.
Garage Stalls	3
School District	820
Taxes	\$1,506
Taxes with Assessments	\$1,566
Tax Year	2023

#### Additional Features:

**Basement:** Finished, Full, Walkout **Fuel:** Propane **Garage:** 3 **Heat:** Forced Air, Fireplace(s) **Sewer:** Tank with Drainage Field **Water:** Submersible - 4 Inch, Well **Air Conditioning:** Central Air

#### Driving Directions:

From Hwys. 71/34 in Park Rapids. South on Hwy 71 approx. 6 miles South of Menahga. Left on 308th Street. Home is on the left.



Listed By:  
Coldwell Banker Crown Realtors

Affinity Real Estate Inc. participates in the Regional Multiple Listing Service of Minnesota, Inc Broker Reciprocity (sm) program, allowing us to display other broker's listings on our website. All properties are subject to prior sale, change or withdrawal.



Call Affinity Real Estate

**218-237-3333**

[info@affinityrealestate.com](mailto:info@affinityrealestate.com)



Affinity Real Estate - 600 Park Avenue South - Park Rapids MN 56470





website: [www.AffinityRealEstate.com](http://www.AffinityRealEstate.com) | email: [info@affinityrealestate.com](mailto:info@affinityrealestate.com) | office: 218-237-3333 | fax: 218-237-3377



**\$339,000**  
 MLS 6406839 Residential  
 13438 308th Street  
 Sebeka MN 56477





website: [www.AffinityRealEstate.com](http://www.AffinityRealEstate.com) | email: [info@affinityrealestate.com](mailto:info@affinityrealestate.com) | office: 218-237-3333 | fax: 218-237-3377

**Affinity**  
REAL ESTATE INC

**\$339,000**  
MLS 6406839 Residential  
13438 308th Street  
Sebeka MN 56477



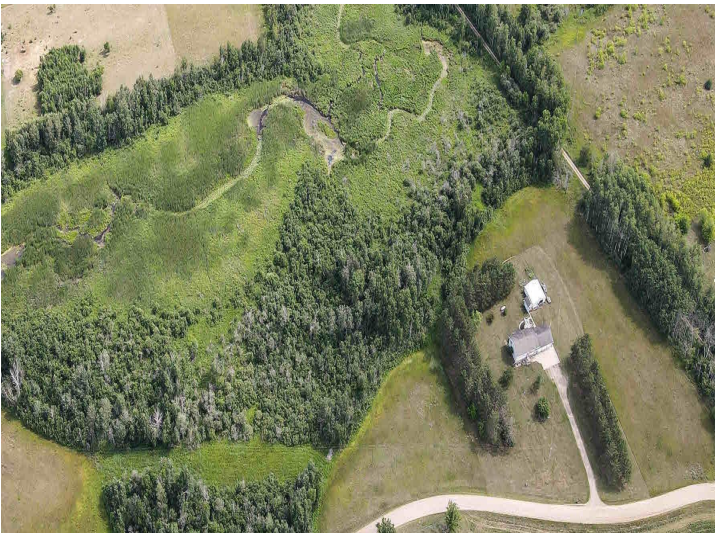


website: [www.AffinityRealEstate.com](http://www.AffinityRealEstate.com) | email: [info@affinityrealestate.com](mailto:info@affinityrealestate.com) | office: 218-237-3333 | fax: 218-237-3377

**Affinity**  
REAL ESTATE INC

**\$339,000**  
MLS 6406839 Residential  
13438 308th Street  
Sebeka MN 56477



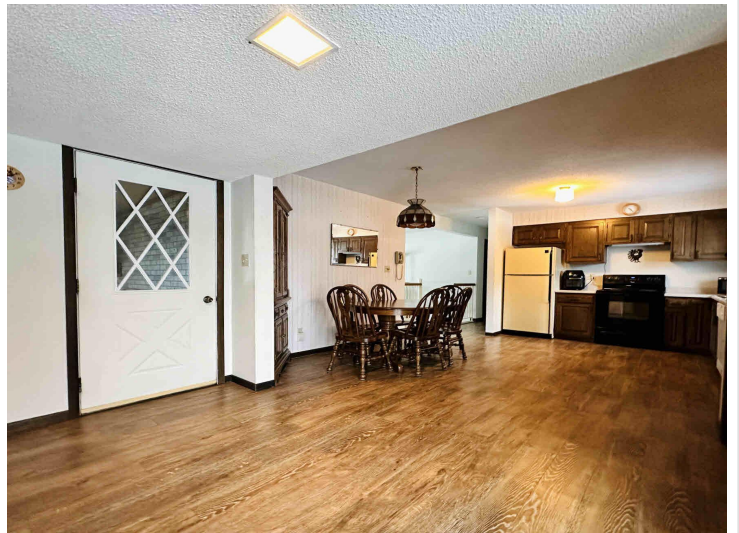
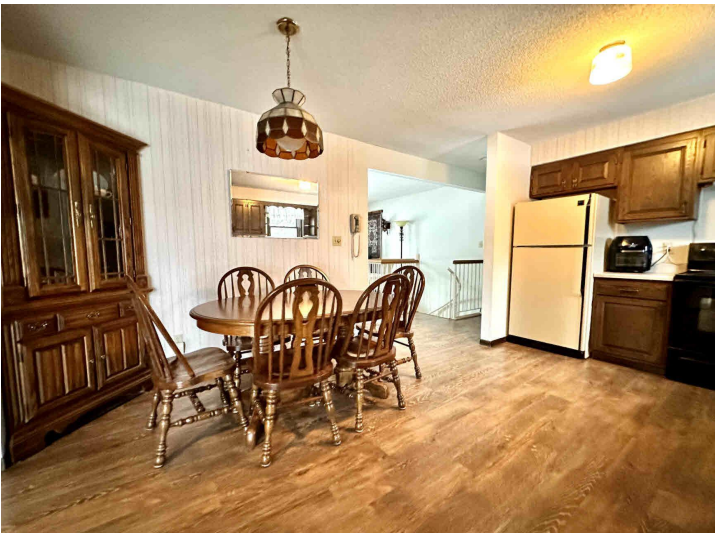


website: [www.AffinityRealEstate.com](http://www.AffinityRealEstate.com) | email: [info@affinityrealestate.com](mailto:info@affinityrealestate.com) | office: 218-237-3333 | fax: 218-237-3377



**\$339,000**  
 MLS 6406839 Residential  
 13438 308th Street  
 Sebeka MN 56477



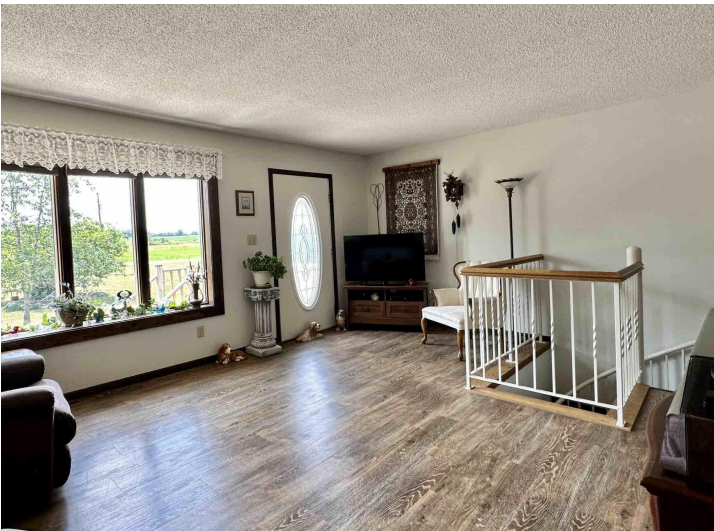
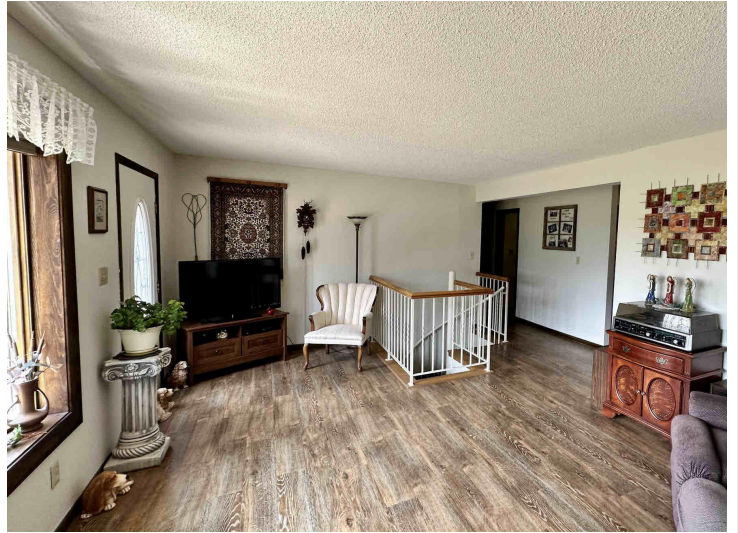
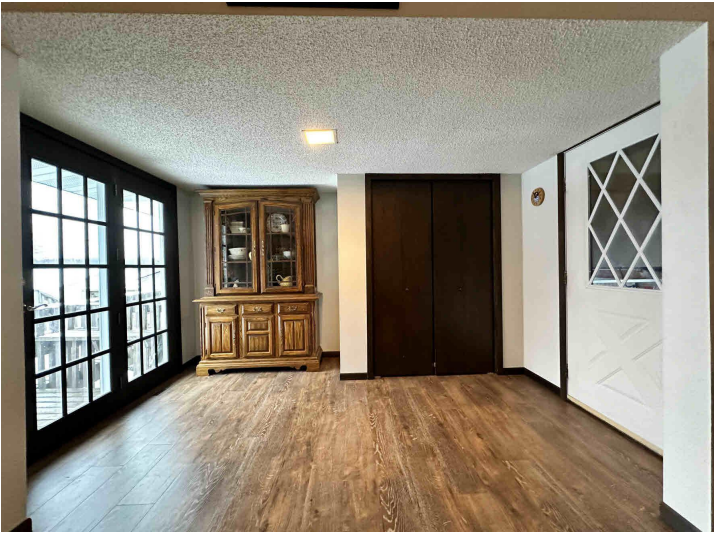


website: [www.AffinityRealEstate.com](http://www.AffinityRealEstate.com) | email: [info@affinityrealestate.com](mailto:info@affinityrealestate.com) | office: 218-237-3333 | fax: 218-237-3377

**Affinity**  
REAL ESTATE INC

**\$339,000**  
MLS 6406839 Residential  
13438 308th Street  
Sebeka MN 56477





website: [www.AffinityRealEstate.com](http://www.AffinityRealEstate.com) | email: [info@affinityrealestate.com](mailto:info@affinityrealestate.com) | office: 218-237-3333 | fax: 218-237-3377

**Affinity**  
REAL ESTATE INC

**\$339,000**  
MLS 6406839 Residential  
13438 308th Street  
Sebeka MN 56477





website: [www.AffinityRealEstate.com](http://www.AffinityRealEstate.com) | email: [info@affinityrealestate.com](mailto:info@affinityrealestate.com) | office: 218-237-3333 | fax: 218-237-3377

**Affinity**  
REAL ESTATE INC

**\$339,000**  
MLS 6406839 Residential  
13438 308th Street  
Sebeka MN 56477



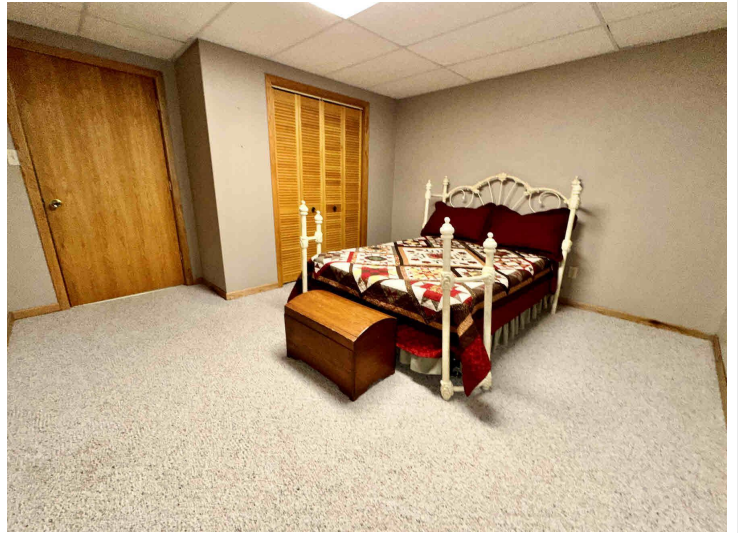


website: [www.AffinityRealEstate.com](http://www.AffinityRealEstate.com) | email: [info@affinityrealestate.com](mailto:info@affinityrealestate.com) | office: 218-237-3333 | fax: 218-237-3377

**Affinity**  
REAL ESTATE INC

**\$339,000**  
MLS 6406839 Residential  
13438 308th Street  
Sebek MN 56477





website: [www.AffinityRealEstate.com](http://www.AffinityRealEstate.com) | email: [info@affinityrealestate.com](mailto:info@affinityrealestate.com) | office: 218-237-3333 | fax: 218-237-3377

**Affinity**  
REAL ESTATE INC

**\$339,000**  
MLS 6406839 Residential  
13438 308th Street  
Sebeka MN 56477





website: [www.AffinityRealEstate.com](http://www.AffinityRealEstate.com) | email: [info@affinityrealestate.com](mailto:info@affinityrealestate.com) | office: 218-237-3333 | fax: 218-237-3377



**\$339,000**  
 MLS 6406839 Residential  
 13438 308th Street  
 Sebeka MN 56477





website: [www.AffinityRealEstate.com](http://www.AffinityRealEstate.com) | email: [info@affinityrealestate.com](mailto:info@affinityrealestate.com) | office: 218-237-3333 | fax: 218-237-3377



**\$339,000**  
 MLS 6406839 Residential  
 13438 308th Street  
 Sebeka MN 56477