



MLS 6410430 Lake Land

\$139,900

Description:

Big Sand Lake 6.4 acre lot with 296 feet of lakeshore. Big Sand is known as one of the premier lakes in the area with excellent fishing and water sports. The lot has a nice variety of trees in the back that goes into lower ground. This property is close to the public access and within minutes of downtown Dorset.

Additional Details:

Lot Acres	6.4
Lot Dimensions	296x1165x72x970
School District	309
Taxes	\$354
Taxes with Assessments	\$354
Tax Year	2023

Additional Features:

Driving Directions:

From Hwys. 71/34 in Park Rapids. East on Hwy 34 to County Rd 4. Left on Cty Rd 4 to a right on Cty Rd 18. Left onto Grouse Road. Property is on the left.



Listed By:
Coldwell Banker Crown Realtors

Affinity Real Estate Inc. participates in the Regional Multiple Listing Service of Minnesota, Inc Broker Reciprocity (sm) program, allowing us to display other broker's listings on our website. All properties are subject to prior sale, change or withdrawal.



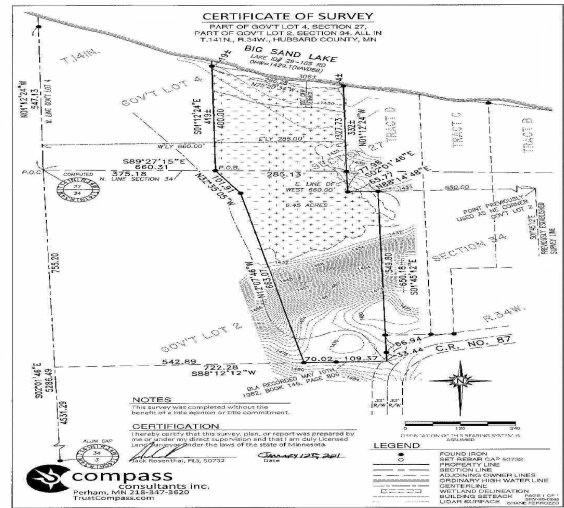
Call Affinity Real Estate

218-237-3333

info@affinityrealestate.com



Affinity Real Estate - 600 Park Avenue South - Park Rapids MN 56470



website: www.AffinityRealEstate.com | email: info@affinityrealestate.com | office: 218-237-3333 | fax: 218-237-3377



\$139,900
MLS 6410430 Lake Land
19234 Grouse Road
Park Rapids MN 56470



website: www.AffinityRealEstate.com | email: info@affinityrealestate.com | office: 218-237-3333 | fax: 218-237-3377



\$139,900
MLS 6410430 Lake Land
19234 Grouse Road
Park Rapids MN 56470