



MLS 6411258 Lake Home

\$689,000

2,864 sq ft
2 bedrooms
2 baths

15303 Haakon Drive
Park Rapids MN 56470

Waterfront: Potato

Status: Pending

Description:

Wonderful Potato Lake home with level elevation, amazing pines, southern exposure AND hard sand. Two plus bedroom, walk-out home features large split-rock fireplace, vaulted ceiling over the kitchen and dining area with a lakeside wrap around deck and spectacular views.

Additional Details:

Year Built	1970
Lot Acres	1.75
Lot Dimensions	180x420
Garage Stalls	2
School District	309
Taxes	\$3,348
Taxes with Assessments	\$3,548
Tax Year	2023

Additional Features:

Fuel: Electric **Heat:** Other

Driving Directions:

From Hwys. 71/34 in Park Rapids. North on Hwy 71 to a right on County 40. Follow approx. 2 miles to a right on Haakon Drive. Follow to property on the left.



Listed By:
Coldwell Banker Crown Realtors

Affinity Real Estate Inc. participates in the Regional Multiple Listing Service of Minnesota, Inc Broker Reciprocity (sm) program, allowing us to display other broker's listings on our website. All properties are subject to prior sale, change or withdrawal.



Call Affinity Real Estate

218-237-3333

info@affinityrealestate.com



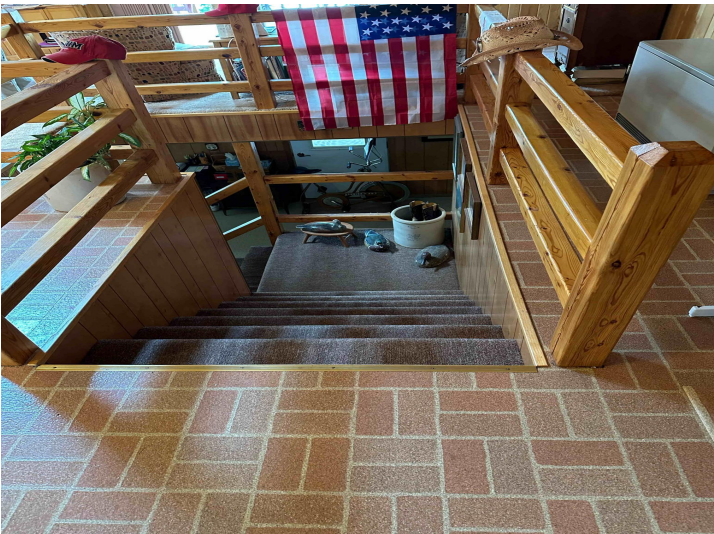
Affinity Real Estate - 600 Park Avenue South - Park Rapids MN 56470



website: www.AffinityRealEstate.com | email: info@affinityrealestate.com | office: 218-237-3333 | fax: 218-237-3377

Affinity
REAL ESTATE INC

\$689,000
MLS 6411258 Lake Home
15303 Haakon Drive
Park Rapids MN 56470



website: www.AffinityRealEstate.com | email: info@affinityrealestate.com | office: 218-237-3333 | fax: 218-237-3377



\$689,000
 MLS 6411258 Lake Home
 15303 Haakon Drive
 Park Rapids MN 56470



website: www.AffinityRealEstate.com | email: info@affinityrealestate.com | office: 218-237-3333 | fax:218-237-3377



\$689,000

MLS 6411258 Lake Home
15303 Haakon Drive
Park Rapids MN 56470