



MLS 6411472 Lake Home

\$1,099,000

1,258 sq ft
2 bedrooms
2 baths

8329 Stump Lake Drive
Bemidji MN 56601

Waterfront: Stump

Status: Active

Description:

A once in a lifetime opportunity to own an island-like peninsula retreat boasting 17+ wooded acres of trails and nearly a mile of lake and river shoreline teeming with Northwoods wildlife and spectacular fishing and boating right out your door. Unwind along the long private forested drive to your meticulously maintained lake home oasis surrounded by water and across from 1,200 acres of State Land. This beautiful, furnished, 2bd, 2ba log home has everything you need to live year-round or make it a peaceful seasonal getaway. Enjoy the 2 decks or sit fireside, basking in spectacular lake views and incredible sunsets as loons call and eagles soar into their nest above. The property also boasts a large clearing for an additional home. A beautiful 4-mile cruise along the Mississippi provides access to Lakes Bemidji, Irving, Carr and Marquette. Eagle Point provides an exclusive private setting with all the convenience 15 minutes from town. It guarantees a location and lifestyle like no other.

Additional Details:

Year Built	1996
Lot Acres	17.23
Lot Dimensions	322x1465x196x201x71x393x90x125x74x 135x1021x699x335
Garage Stalls	1
School District	31
Taxes	\$4,416
Taxes with Assessments	\$4,416
Tax Year	2023

Additional Features:

Fuel: Electric **Heat:** Baseboard

Driving Directions:

From downtown Bemidji take Bemidji Ave to 1st St E. Left on 1st St E to Lake Ave. Left on Lake Ave to Power Dam Rd NE. Right on Power Dam Rd to Frohn Rd NE. Left on Frohn Rd to 8329 Stump Lake Rd on your right. NOTE: 1/2 mile off of Stump Lake Rd to the cabin on unpaved driveway.



Listed By:
Better Homes and Gardens Real Estate First Cho

Affinity Real Estate Inc. participates in the Regional Multiple Listing Service of Minnesota, Inc Broker Reciprocity (sm) program, allowing us to display other broker's listings on our website. All properties are subject to prior sale, change or withdrawal.



Call Affinity Real Estate

218-237-3333

info@affinityrealestate.com



Affinity Real Estate - 600 Park Avenue South - Park Rapids MN 56470



website: www.AffinityRealEstate.com | email: info@affinityrealestate.com | office: 218-237-3333 | fax:218-237-3377



\$1,099,000
MLS 6411472 Lake Home
8329 Stump Lake Drive
Bemidji MN 56601



website: www.AffinityRealEstate.com | email: info@affinityrealestate.com | office: 218-237-3333 | fax:218-237-3377



\$1,099,000
MLS 6411472 Lake Home
8329 Stump Lake Drive
Bemidji MN 56601



website: www.AffinityRealEstate.com | email: info@affinityrealestate.com | office: 218-237-3333 | fax: 218-237-3377

Affinity
REAL ESTATE INC

\$1,099,000
MLS 6411472 Lake Home
8329 Stump Lake Drive
Bemidji MN 56601



website: www.AffinityRealEstate.com | email: info@affinityrealestate.com | office: 218-237-3333 | fax:218-237-3377

Affinity
REAL ESTATE INC

\$1,099,000
MLS 6411472 Lake Home
8329 Stump Lake Drive
Bemidji MN 56601



website: www.AffinityRealEstate.com | email: info@affinityrealestate.com | office: 218-237-3333 | fax:218-237-3377

Affinity
REAL ESTATE INC

\$1,099,000
MLS 6411472 Lake Home
8329 Stump Lake Drive
Bemidji MN 56601



website: www.AffinityRealEstate.com | email: info@affinityrealestate.com | office: 218-237-3333 | fax:218-237-3377

Affinity
REAL ESTATE INC

\$1,099,000
MLS 6411472 Lake Home
8329 Stump Lake Drive
Bemidji MN 56601



website: www.AffinityRealEstate.com | email: info@affinityrealestate.com | office: 218-237-3333 | fax:218-237-3377



\$1,099,000
MLS 6411472 Lake Home
8329 Stump Lake Drive
Bemidji MN 56601



website: www.AffinityRealEstate.com | email: info@affinityrealestate.com | office: 218-237-3333 | fax: 218-237-3377

Affinity
REAL ESTATE INC

\$1,099,000
MLS 6411472 Lake Home
8329 Stump Lake Drive
Bemidji MN 56601



website: www.AffinityRealEstate.com | email: info@affinityrealestate.com | office: 218-237-3333 | fax:218-237-3377



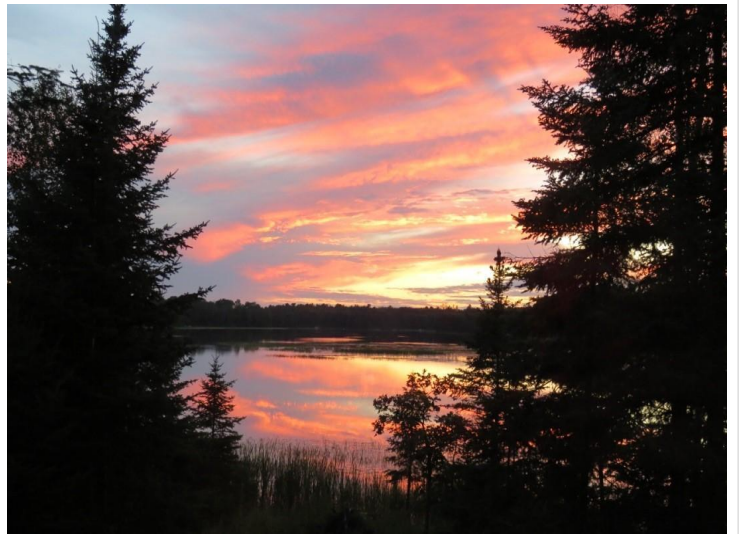
\$1,099,000
MLS 6411472 Lake Home
8329 Stump Lake Drive
Bemidji MN 56601



website: www.AffinityRealEstate.com | email: info@affinityrealestate.com | office: 218-237-3333 | fax:218-237-3377



\$1,099,000
MLS 6411472 Lake Home
8329 Stump Lake Drive
Bemidji MN 56601



website: www.AffinityRealEstate.com | email: info@affinityrealestate.com | office: 218-237-3333 | fax:218-237-3377

Affinity
REAL ESTATE INC

\$1,099,000
MLS 6411472 Lake Home
8329 Stump Lake Drive
Bemidji MN 56601



website: www.AffinityRealEstate.com | email: info@affinityrealestate.com | office: 218-237-3333 | fax:218-237-3377



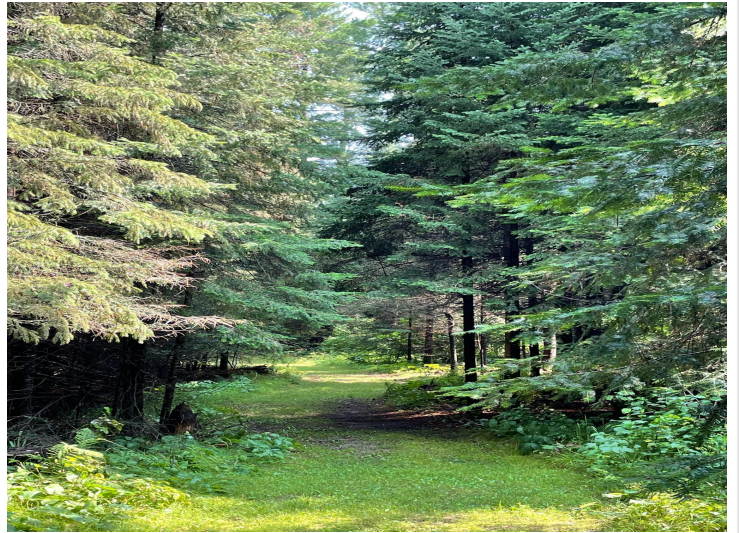
\$1,099,000
MLS 6411472 Lake Home
8329 Stump Lake Drive
Bemidji MN 56601



website: www.AffinityRealEstate.com | email: info@affinityrealestate.com | office: 218-237-3333 | fax:218-237-3377

Affinity
REAL ESTATE INC

\$1,099,000
MLS 6411472 Lake Home
8329 Stump Lake Drive
Bemidji MN 56601



website: www.AffinityRealEstate.com | email: info@affinityrealestate.com | office: 218-237-3333 | fax:218-237-3377



\$1,099,000
MLS 6411472 Lake Home
8329 Stump Lake Drive
Bemidji MN 56601



website: www.AffinityRealEstate.com | email: info@affinityrealestate.com | office: 218-237-3333 | fax:218-237-3377



\$1,099,000
MLS 6411472 Lake Home
8329 Stump Lake Drive
Bemidji MN 56601