



MLS 6412581 Land

**\$25,000**

0.49 Acres  
Subdivided

1201 Unit 39 Tyler Avenue  
Bemidji MN 56601

Status: Active

**Description:**

Tyler Hills CIC. Development of residential lots for you to build your new home. Convenient area on the east side of Bemidji with less than 10 minutes to Lake Bemidji boat accesses and less than 5 minutes to the Blue Ox Trail. Come find your favorite building site!

**Additional Details:**

Lot Acres	0.49
Lot Dimensions	185x174x61x221
School District	31
Taxes	\$56
Taxes with Assessments	\$56
Tax Year	2022

**Additional Features:**

**Driving Directions:**

From Keith's Pizza South take 1st St SE, turn left onto Lake Ave NE, right on Mill St NE, left on Tyler Ave NE. Tyler Hills will be on your left.



Listed By:  
Realty Experts, LLC

Affinity Real Estate Inc. participates in the Regional Multiple Listing Service of Minnesota, Inc Broker Reciprocity (sm) program, allowing us to display other broker's listings on our website. All properties are subject to prior sale, change or withdrawal.



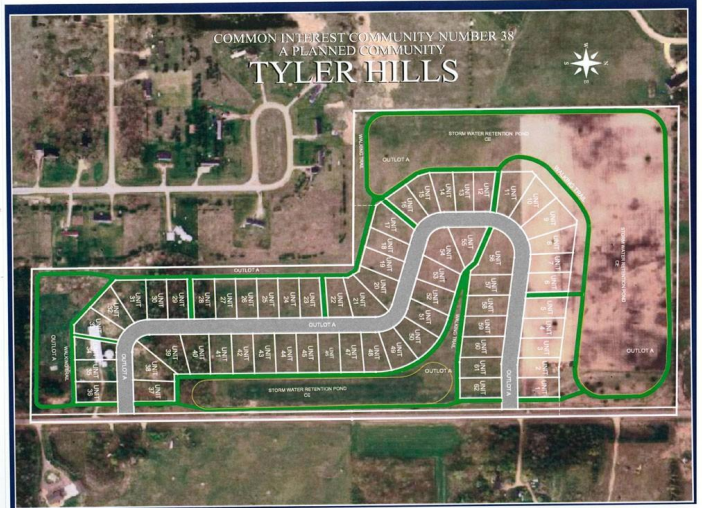
Call Affinity Real Estate

**218-237-3333**

[info@affinityrealestate.com](mailto:info@affinityrealestate.com)



Affinity Real Estate - 600 Park Avenue South - Park Rapids MN 56470



website: [www.AffinityRealEstate.com](http://www.AffinityRealEstate.com) | email: [info@affinityrealestate.com](mailto:info@affinityrealestate.com) | office: 218-237-3333 | fax:218-237-3377



**\$25,000**  
MLS 6412581 Land  
1201 Unit 39 Tyler Avenue  
Bemidji MN 56601



website: [www.AffinityRealEstate.com](http://www.AffinityRealEstate.com) | email: [info@affinityrealestate.com](mailto:info@affinityrealestate.com) | office: 218-237-3333 | fax:218-237-3377



**\$25,000**  
MLS 6412581 Land  
1201 Unit 39 Tyler Avenue  
Bemidji MN 56601